

Anti-IL-1 alpha antibody ab9614

★★★★★ [3 Abreviews](#) [19 References](#) [画像数 3](#)

製品の概要

製品名	Anti-IL-1 alpha antibody
製品の詳細	Rabbit polyclonal to IL-1 alpha
由来種	Rabbit
アプリケーション	適用あり: ICC/IF, Sandwich ELISA, WB, Neutralising, IHC-P, ELISA
種交差性	交差種: Human
免疫原	Recombinant full length protein corresponding to Human IL-1 alpha. Highly pure (>98%) recombinant hIL-1a (human Interleukin-1-alpha). Database link: P01583
ポジティブ・コントロール	IHC-P: Human liver tissue; Recombinant human IL-1 alpha protein (ab9615) can be used as a positive control in WB.
特記事項	<p>This product is no longer batch tested in IHC, for an IHC validated antibody please see ab7632</p> <p>The Life Science industry has been in the grips of a reproducibility crisis for a number of years. Abcam is leading the way in addressing this with our range of recombinant monoclonal antibodies and knockout edited cell lines for gold-standard validation. Please check that this product meets your needs before purchasing.</p> <p>If you have any questions, special requirements or concerns, please send us an inquiry and/or contact our Support team ahead of purchase. Recommended alternatives for this product can be found below, along with publications, customer reviews and Q&As</p>

製品の特性

製品の状態	Lyophilized: Reconstitute with 200µl of sterile water. The reconstituted antibody is stable for at least 2 weeks at 2-8°C and at least 6 months at -20°C
保存方法	Shipped at 4°C. Store at -20°C.
バッファー	No preservative, sterile filtered
精製度	Immunogen affinity purified
ポリ/モノ	ポリクローナル
アイソタイプ	unknown
軽鎖の種類	unknown

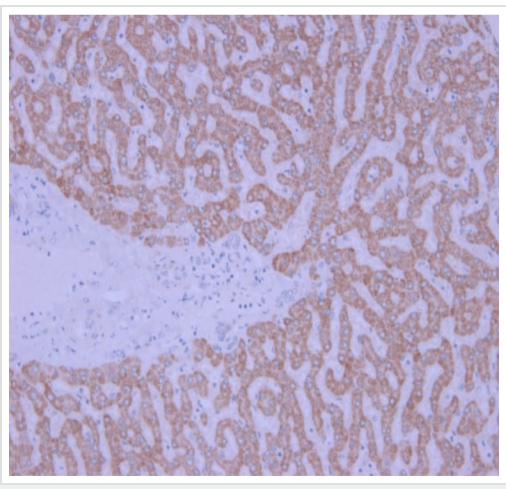
アプリケーション

The Abpromise guarantee Abpromise保証は、次のテスト済みアプリケーションにおけるab9614の使用に適用されます
アプリケーションノートには、推奨の開始希釈率がありますが、適切な希釈率につきましてはご検討ください。

アプリケーション	Abreviews	特記事項
ICC/IF	★★★★★ (1)	Use at an assay dependent concentration.
Sandwich ELISA		Use at an assay dependent concentration. To detect IL-1 alpha by sandwich ELISA (using 100 µl/well antibody solution) a concentration of 0.5 - 2.0 µg/ml of this antibody is required. This antigen affinity purified antibody, in conjunction with ab271226 as a detection antibody, allows the detection of at least 0.2 - 0.4 ng/well of recombinant IL-1 alpha.
WB	★★★★★ (1)	Use at an assay dependent concentration. To detect hIL-1a by Western Blot analysis this antibody can be used at a concentration of 0.1 - 0.2 µg/ml. Used in conjunction with compatible secondary reagents the detection limit for recombinant hIL-1a is 1.5 - 3.0 ng/lane, under either reducing or non-reducing conditions.
Neutralising		Use at an assay dependent concentration. To yield one-half maximal inhibition [ND50] of the biological activity of hIL-1a (20 ng/ml), a concentration of 1.0 - 2.0 µg/ml of this antibody is required.
IHC-P		Use a concentration of 1 µg/ml. Perform heat mediated antigen retrieval before commencing with IHC staining protocol.
ELISA		Use at an assay dependent concentration. To detect hIL-1a by direct ELISA (using 100 µl/well antibody solution) a concentration of at least 0.5 µg/ml of this antibody is required. This antigen affinity purified antibody, in conjunction with compatible secondary reagents, allows the detection of 0.2 - 0.4 ng/well of recombinant hIL-1a.

ターゲット情報

機能	Produced by activated macrophages, IL-1 stimulates thymocyte proliferation by inducing IL-2 release, B-cell maturation and proliferation, and fibroblast growth factor activity. IL-1 proteins are involved in the inflammatory response, being identified as endogenous pyrogens, and are reported to stimulate the release of prostaglandin and collagenase from synovial cells.
配列類似性	Belongs to the IL-1 family.
ドメイン	The similarity among the IL-1 precursors suggests that the amino ends of these proteins serve some as yet undefined function.
細胞内局在	Secreted. The lack of a specific hydrophobic segment in the precursor sequence suggests that IL-1 is released by damaged cells or is secreted by a mechanism differing from that used for other secretory proteins.

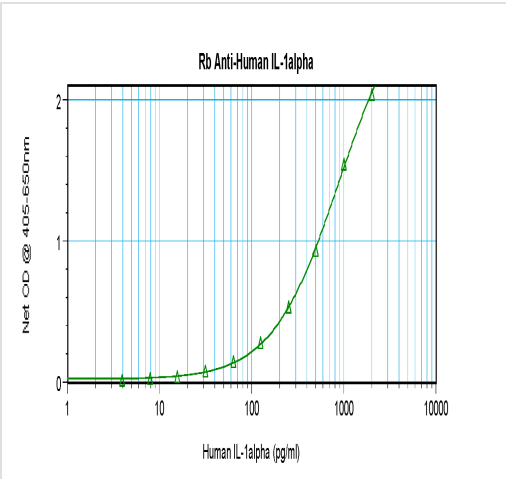


Immunohistochemistry (Formalin/PFA-fixed paraffin-embedded sections) - Anti-IL-1 alpha antibody (ab9614)

Immunohistochemistry (Formalin/PFA-fixed paraffin-embedded sections) analysis of human liver tissue labelling IL-1 alpha with ab9614 at 1 µg/mL (45 minute incubation at room temperature). Heat mediated antigen retrieval was performed using a buffer at pH 6. An HRP-labeled polymer detection system was used with a DAB chromogen.



Western blot - Anti-IL-1 alpha antibody (ab9614)



Sandwich ELISA - Anti-IL-1 alpha antibody (ab9614)

Please note: All products are "FOR RESEARCH USE ONLY. NOT FOR USE IN DIAGNOSTIC PROCEDURES"

Our Abpromise to you: Quality guaranteed and expert technical support

- Replacement or refund for products not performing as stated on the datasheet
- Valid for 12 months from date of delivery
- Response to your inquiry within 24 hours
- We provide support in Chinese, English, French, German, Japanese and Spanish
- Extensive multi-media technical resources to help you
- We investigate all quality concerns to ensure our products perform to the highest standards

If the product does not perform as described on this datasheet, we will offer a refund or replacement. For full details of the Abpromise, please visit <https://www.abcam.co.jp/abpromise> or contact our technical team.

Terms and conditions

- Guarantee only valid for products bought direct from Abcam or one of our authorized distributors