

Anti-IKKi/IKKe antibody [EPR4904] - BSA and Azide free ab247993

リコンビナント **RabMAb**

画像数 5

製品の概要

製品名	Anti-IKKi/IKKe antibody [EPR4904] - BSA and Azide free
製品の詳細	Rabbit monoclonal [EPR4904] to IKKi/IKKe - BSA and Azide free
由来種	Rabbit
アプリケーション	適用あり: Flow Cyt (Intra), WB, IHC-P 適用なし: IP
種交差性	交差種: Human
免疫原	Synthetic peptide. This information is proprietary to Abcam and/or its suppliers.
特記事項	<p>ab247993 is the carrier-free version of ab124766.</p> <p>Our carrier-free antibodies are typically supplied in a PBS-only formulation, purified and free of BSA, sodium azide and glycerol. The carrier-free buffer and high concentration allow for increased conjugation efficiency.</p> <p>This conjugation-ready format is designed for use with fluorochromes, metal isotopes, oligonucleotides, and enzymes, which makes them ideal for antibody labelling, functional and cell-based assays, flow-based assays (e.g. mass cytometry) and Multiplex Imaging applications.</p> <p>Use our conjugation kits for antibody conjugates that are ready-to-use in as little as 20 minutes with <1 minute hands-on-time and 100% antibody recovery: available for fluorescent dyes, HRP, biotin and gold.</p> <p>This product is compatible with the Maxpar[®] Antibody Labeling Kit from Fluidigm, without the need for antibody preparation. Maxpar[®] is a trademark of Fluidigm Canada Inc.</p> <p>This product is a recombinant monoclonal antibody, which offers several advantages including:</p> <ul style="list-style-type: none"> - High batch-to-batch consistency and reproducibility - Improved sensitivity and specificity - Long-term security of supply - Animal-free production <p>For more information see here.</p> <p>Our RabMAb[®] technology is a patented hybridoma-based technology for making rabbit monoclonal antibodies. For details on our patents, please refer to RabMAb[®] patents.</p> <p>Mouse, Rat: We have preliminary internal testing data to indicate this antibody may not react with</p>

these species. Please contact us for more information.

製品の特性

製品の状態

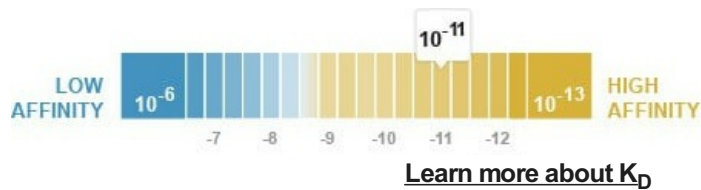
Liquid

保存方法

Shipped at 4°C. Store at +4°C. Do Not Freeze.

解離定数 (K_D 値)

$K_D = 5.52 \times 10^{-11}$ M



バッファー

pH: 7.2

Constituent: PBS

キャリア・フリー

はい

精製度

Protein A purified

ポリ/モノ

モノクローナル

クローン名

EPR4904

アイソタイプ

IgG

アプリケーション

The Abpromise guarantee

Abpromise保証は、次のテスト済みアプリケーションにおけるab247993の使用に適用されます

アプリケーションノートには、推奨の開始希釈率がありますが、適切な希釈率につきましてはご確認ください。

アプリケーション	Abreviews	特記事項
Flow Cyt (Intra)		Use at an assay dependent concentration.
WB		Use at an assay dependent concentration. Detects a band of approximately 80 kDa (predicted molecular weight: 80 kDa).
IHC-P		Use at an assay dependent concentration. Perform heat mediated antigen retrieval before commencing with IHC staining protocol. For antigen retrieval, heat up to 98 degree C, below boiling, and then let cool for 10-20 minutes.

追加情報

Is unsuitable for IP.

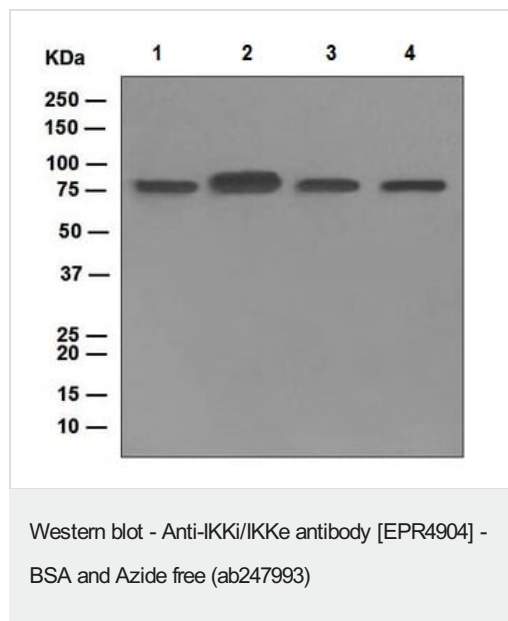
ターゲット情報

機能

Phosphorylates inhibitors of NF-kappa-B thus leading to the dissociation of the inhibitor/NF-kappa-B complex and ultimately the degradation of the inhibitor. May play a special role in the immune response. Protects cells against DNA damage-induced cell death.

組織特異性	Highly expressed in spleen followed by thymus, peripheral blood leukocytes, pancreas, placenta. Weakly expressed in lung, kidney, prostate, ovary and colon.
配列類似性	Belongs to the protein kinase superfamily. Ser/Thr protein kinase family. I-kappa-B kinase subfamily. Contains 1 protein kinase domain.
翻訳後修飾	Autophosphorylated. Sumoylation by TOPORS upon DNA damage is required for protection of cells against DNA damage-induced cell death. Desumoylated by SENP1.
細胞内局在	Cytoplasm. Nucleus. Nucleus > PML body. Targeting to PML nuclear bodies upon DNA damage is TOPORS-dependent.

画像



All lanes : Anti-IKKi/IKKe antibody [EPR4904] ([ab124766](#)) at 1/10000 dilution

Lane 1 : HeLa cell lysate

Lane 2 : Raji cell lysate

Lane 3 : MCF7 cell lysate

Lane 4 : Jurkat cell lysate

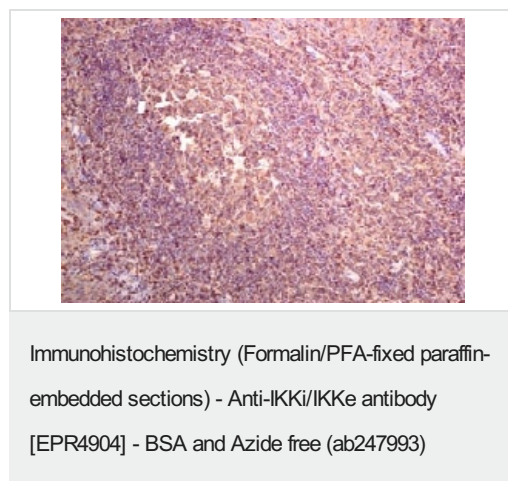
Lysates/proteins at 10 µg per lane.

Secondary

All lanes : Goat anti-Rabbit HRP at 1/2000 dilution

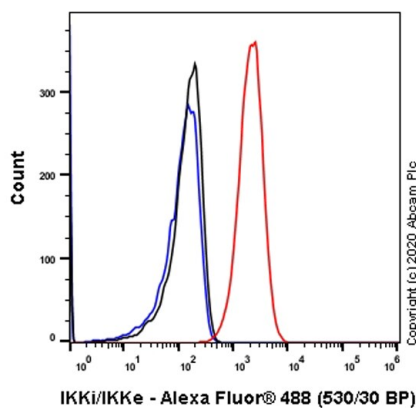
Predicted band size: 80 kDa

This data was developed using [ab124766](#), the same antibody clone in a different buffer formulation.



This data was developed using [ab124766](#), the same antibody clone in a different buffer formulation.

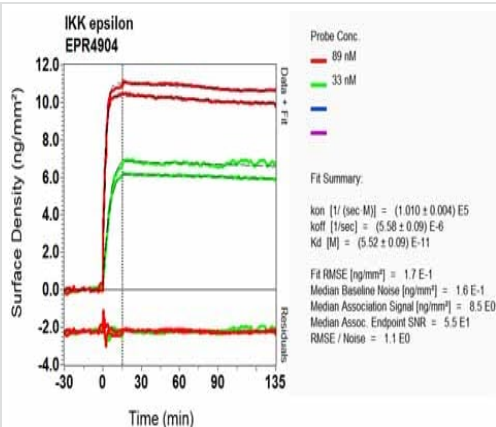
[ab124766](#), at 1/100 dilution, staining IKKi/IKKe in paraffin-embedded Human tonsil tissue by Immunohistochemistry. Perform heat mediated antigen retrieval before commencing with IHC staining protocol.



Flow Cytometry (Intracellular) - Anti-IKKi/IKKe antibody [EPR4904] - BSA and Azide free (ab247993)

This data was developed using [ab124766](#), the same antibody clone in a different buffer formulation.

Flow Cytometry analysis of HeLa (Human cervix adenocarcinoma epithelial cell) cells labeling IKKi/IKKe with purified [ab124766](#) at 1/1000 dilution (1 µg/mL) (Red). Cells were fixed with 4% Paraformaldehyde and permeabilised with 90% Methanol. A Goat anti rabbit IgG (Alexa Fluor® 488, [ab150077](#)) secondary antibody was used at 1/2000. Isotype control - Rabbit monoclonal IgG (Black). Unlabeled control - Cell without incubation with primary antibody and secondary antibody (Blue).



OL-RD Scanning - Anti-IKKi/IKKe antibody [EPR4904] - BSA and Azide free (ab247993)

This data was developed using [ab124766](#), the same antibody clone in a different buffer formulation. Equilibrium dissociation constant (K_D)

Learn more about K_D

[Click here to learn more about \$K_D\$](#)

Why choose a recombinant antibody?



Research with confidence
Consistent and reproducible results



Long-term and scalable supply
Recombinant technology



Success from the first experiment
Confirmed specificity



Ethical standards compliant
Animal-free production

Anti-IKKi/IKKe antibody [EPR4904] - BSA and Azide free (ab247993)

Please note: All products are "FOR RESEARCH USE ONLY. NOT FOR USE IN DIAGNOSTIC PROCEDURES"

Our Abpromise to you: Quality guaranteed and expert technical support

- Replacement or refund for products not performing as stated on the datasheet
- Valid for 12 months from date of delivery
- Response to your inquiry within 24 hours
- We provide support in Chinese, English, French, German, Japanese and Spanish
- Extensive multi-media technical resources to help you
- We investigate all quality concerns to ensure our products perform to the highest standards

If the product does not perform as described on this datasheet, we will offer a refund or replacement. For full details of the Abpromise, please visit <https://www.abcam.co.jp/abpromise> or contact our technical team.

Terms and conditions

- Guarantee only valid for products bought direct from Abcam or one of our authorized distributors