

Anti-IGFBP2 antibody [EPR18012-257] ab188200

リコンビナント **RabMAb**

★★★★☆ **1 Abreviews** **2 References** [画像数 10](#)

製品の概要

製品名	Anti-IGFBP2 antibody [EPR18012-257]
製品の詳細	Rabbit monoclonal [EPR18012-257] to IGFBP2
由来種	Rabbit
アプリケーション	適用あり: IHC-Fr, IP, WB, IHC-P, Flow Cyt (Intra)
種交差性	交差種: Mouse, Rat, Human
免疫原	Recombinant fragment. This information is proprietary to Abcam and/or its suppliers.
ポジティブ・コントロール	WB: Human, rat and mouse serum; human liver lysate; T-47D and RAW 264.7 whole cell lysate. IHC-P: Mouse choroid plexus and liver tissue. IHC-Fr: Mouse and rat brain (choroid plexus). Flow Cyt (intra): T-47D and RAW 264.7 cells. IP: Human serum.
特記事項	Our RabMAb [®] technology is a patented hybridoma-based technology for making rabbit monoclonal antibodies. For details on our patents, please refer to RabMAb[®] patents .

製品の特性

製品の状態	Liquid
保存方法	Shipped at 4°C. Store at +4°C short term (1-2 weeks). Upon delivery aliquot. Store at -20°C long term. Avoid freeze / thaw cycle.
バッファー	pH: 7.2 Preservative: 0.01% Sodium azide Constituents: PBS, 0.05% BSA, 40% Glycerol
精製度	Protein A purified
ポリ/モノ	モノクローナル
クローン名	EPR18012-257
アイソタイプ	IgG

アプリケーション

The Abpromise guarantee

Abpromise保証は、次のテスト済みアプリケーションにおけるab188200の使用に適用されます

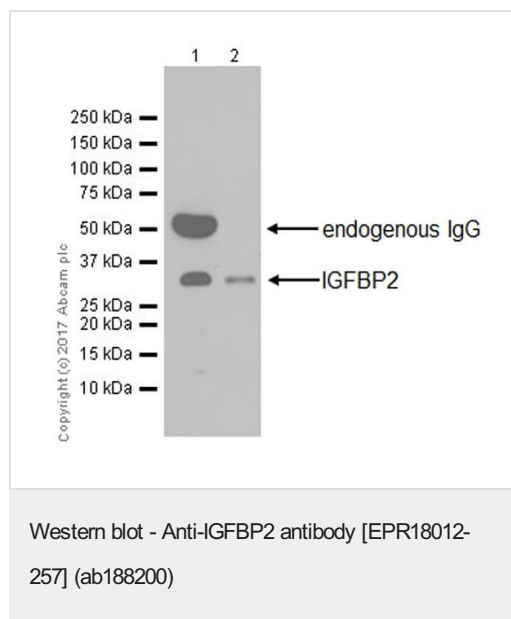
アプリケーションノートには、推奨の開始希釈率がありますが、適切な希釈率につきましてはご確認ください。

アプリケーション	Abreviews	特記事項
IHC-Fr	★★★★★ (1)	1/500.
IP		1/30.
WB		1/1000. Detects a band of approximately 33 kDa (predicted molecular weight: 33 kDa).
IHC-P		1/1000. Perform heat mediated antigen retrieval with Tris/EDTA buffer pH 9.0 before commencing with IHC staining protocol. This antibody is not suitable for human and rat species in IHC application due to non-specific or negative staining.
Flow Cyt (Intra)		1/60.

ターゲット情報

機能	Inhibits IGF-mediated growth and developmental rates. IGF-binding proteins prolong the half-life of the IGFs and have been shown to either inhibit or stimulate the growth promoting effects of the IGFs on cell culture. They alter the interaction of IGFs with their cell surface receptors.
配列類似性	Contains 1 IGFBP N-terminal domain. Contains 1 thyroglobulin type-1 domain.
ドメイン	The C-terminus is required for IGF-binding and growth inhibition.
翻訳後修飾	O-glycosylated.
細胞内局在	Secreted.

画像



All lanes : Anti-IGFBP2 antibody [EPR18012-257] (ab188200) at 1/1000 dilution

Lane 1 : Human serum

Lane 2 : Human liver lysate

Lysates/proteins at 20 µg per lane.

Secondary

All lanes : VeriBlot for IP Detection Reagent (HRP) ([ab131366](#)) at 1/1000 dilution

Developed using the ECL technique.

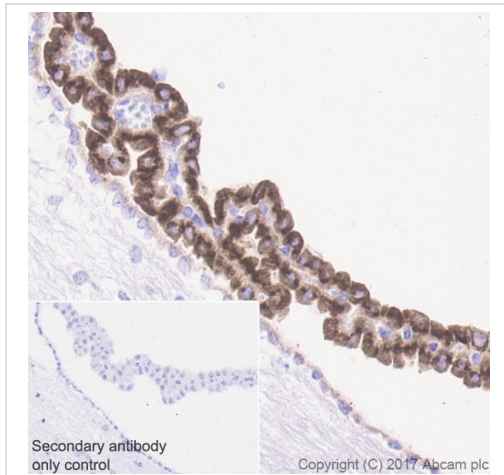
Predicted band size: 33 kDa

Observed band size: 33 kDa

Exposure time: 3 minutes

Blocking: 5% NFDM/TBST.

The band in lane 1 is human IgG heavy chain which is often observed in serum and plasma samples.

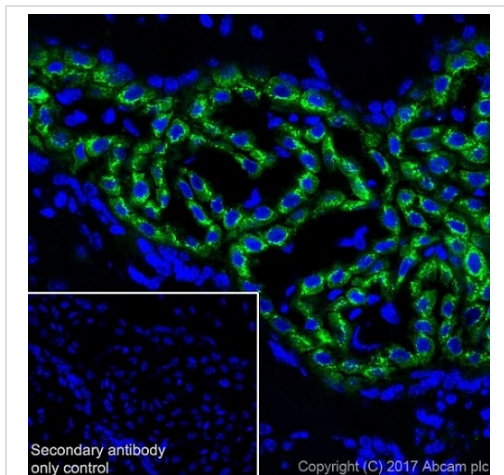


Immunohistochemistry (Formalin/PFA-fixed paraffin-embedded sections) - Anti-IGFBP2 antibody [EPR18012-257] (ab188200)

Immunohistochemical analysis of paraffin-embedded mouse choroid plexus tissue labeling IGFBP2 with ab188200 at 1/1000 dilution, followed by a Goat Anti-Rabbit IgG H&L (HRP) ready to use. Cytoplasmic staining on mouse choroid plexus (PMID: 7525264; PMID: 7678219) is observed. Counter stained with hematoxylin.

Secondary antibody only control: Used PBS instead of primary antibody, secondary antibody is a Goat Anti-Rabbit IgG H&L (HRP) ready to use.

Perform heat mediated antigen retrieval using [ab93684](#) (Tris/EDTA buffer, pH 9.0).



Immunohistochemistry (Frozen sections) - Anti-IGFBP2 antibody [EPR18012-257] (ab188200)

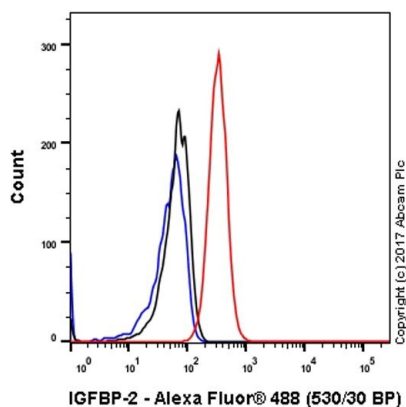
Immunohistochemical analysis of 4% PFA fixed, 0.2% TritonX-100 permeabilized mouse brain (choroid plexus) tissue labeling IGFBP2 with ab188200 at 1/500 dilution, followed by [ab150077](#)

AlexaFluor®488 Goat anti-Rabbit secondary at 1/1000 dilution.

Cytoplasmic staining in the epithelial cells of choroid plexus on mouse tissue section is observed. Counter stained with DAPI.

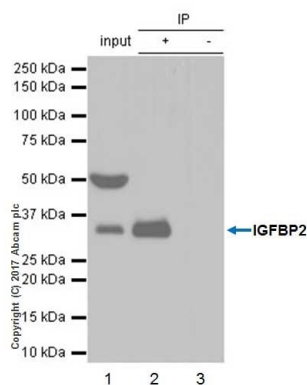
Secondary antibody only control: Used PBS instead of primary antibody, secondary antibody is [ab150077](#) AlexaFluor®488 Goat anti-Rabbit secondary at 1/1000 dilution.

Perform heat mediated antigen retrieval using Tris-EDTA (pH 9.0) ([ab94681](#)).



Flow Cytometry (Intracellular) - Anti-IGFBP2 antibody [EPR18012-257] (ab188200)

Intracellular flow cytometric analysis of 4% paraformaldehyde fixed, 90% methanol permeabilized T-47D (human ductal breast epithelial tumor epithelial cell) cell line labeling IGFBP2 with ab188200 at 1/60 (Red) compared with a Rabbit monoclonal IgG ([ab172730](#)) (Black) and an unlabelled control (cells without incubation with primary antibody and secondary antibody) (Blue). Goat anti rabbit IgG (Alexa Fluor® 488, [ab150077](#)), at 1/2000 dilution was used as the secondary antibody.



Immunoprecipitation - Anti-IGFBP2 antibody [EPR18012-257] (ab188200)

IGFBP2 was immunoprecipitated from 0.35 mg of human serum with ab188200 at 1/30 dilution. Western blot was performed from the immunoprecipitate using ab188200 at 1/1000 dilution. VeriBlot for IP Detection Reagent (HRP) ([ab131366](#)), was used for detection at 1/10000 dilution.

Lane 1: Human serum 10 µg (Input).

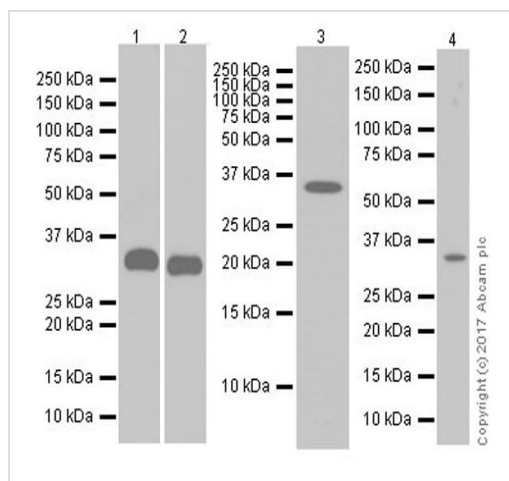
Lane 2: ab188200 IP in Human serum (+).

Lane 3: Rabbit monoclonal IgG ([ab172730](#)) instead of ab188200 in human serum (-).

Blocking and dilution buffer and concentration: 5% NFDM/TBST.

Exposure time: 1 second.

The band in lane 1 is human IgG heavy chain which is often observed in serum and plasma samples.



Western blot - Anti-IGFBP2 antibody [EPR18012-257] (ab188200)

All lanes : Anti-IGFBP2 antibody [EPR18012-257] (ab188200) at 1/1000 dilution

Lane 1 : Mouse serum

Lane 2 : T-47D (human ductal breast epithelial tumor epithelial cell) whole cell lysate

Lane 3 : Rat serum

Lane 4 : RAW 264.7 (mouse Abelson murine leukemia virus-induced tumor macrophage) whole cell lysate

Lysates/proteins at 20 µg per lane.

Secondary

All lanes : Goat Anti-Rabbit IgG H&L (HRP) ([ab97051](#)) at 1/100000 dilution

Developed using the ECL technique.

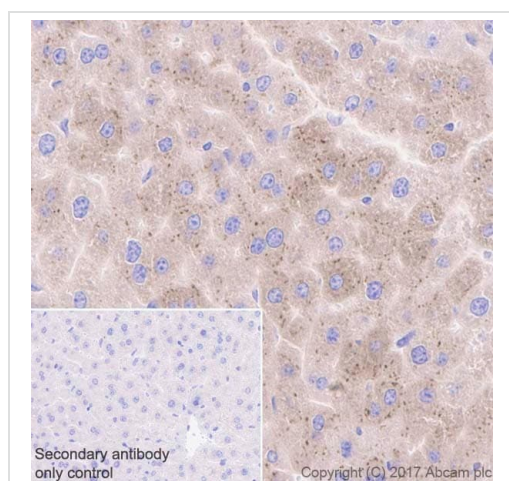
Predicted band size: 33 kDa

Observed band size: 33 kDa

Exposure time: 3 minutes

Blocking: 5% NFDM/TBST.

The expression profile observed on T-47D is consistent with what has been described in the literature (PMID: 23515291).

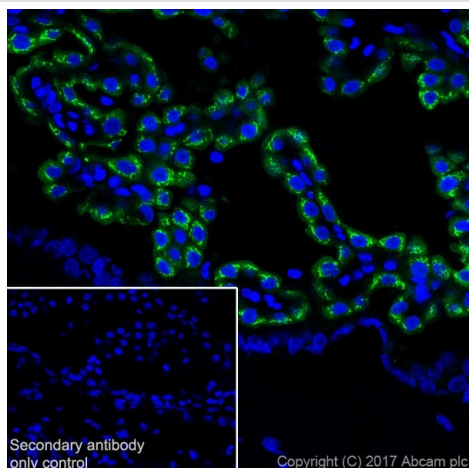


Immunohistochemistry (Formalin/PFA-fixed paraffin-embedded sections) - Anti-IGFBP2 antibody [EPR18012-257] (ab188200)

Immunohistochemical analysis of paraffin-embedded mouse liver tissue labeling IGFBP2 with ab188200 at 1/1000 dilution, followed by a Goat Anti-Rabbit IgG H&L (HRP) ready to use. Cytoplasmic staining on mouse liver (PMID: 7678219) is observed. Counter stained with hematoxylin.

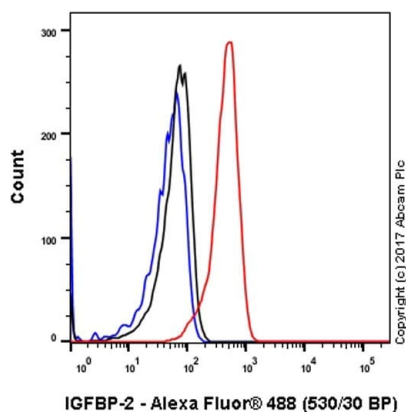
Secondary antibody only control: Used PBS instead of primary antibody, secondary antibody is a Goat Anti-Rabbit IgG H&L (HRP) ready to use.

Perform heat mediated antigen retrieval using [ab93684](#) (Tris/EDTA buffer, pH 9.0).



Immunohistochemistry (Frozen sections) - Anti-IGFBP2 antibody [EPR18012-257] (ab188200)

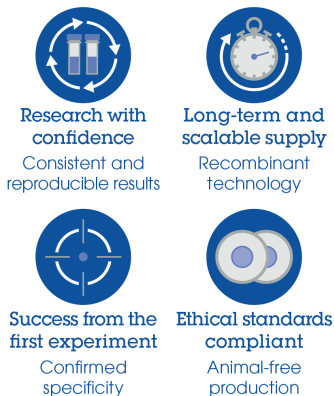
Immunohistochemical analysis of 4% PFA fixed, 0.2% TritonX-100 permeabilized rat brain (choroid plexus) tissue labeling IGFBP2 with ab188200 at 1/500 dilution, followed by [ab150077](#) AlexaFluor®488 Goat anti-Rabbit secondary at 1/1000 dilution. Cytoplasmic staining in the epithelial cells of choroid plexus on rat tissue section is observed. Counter stained with DAPI. Secondary antibody only control: Used PBS instead of primary antibody, secondary antibody is [ab150077](#) AlexaFluor®488 Goat anti-Rabbit secondary at 1/1000 dilution. Perform heat mediated antigen retrieval using Tris-EDTA (pH 9.0) ([ab94681](#)).



Flow Cytometry (Intracellular) - Anti-IGFBP2 antibody [EPR18012-257] (ab188200)

Intracellular flow cytometric analysis of 4% paraformaldehyde fixed, 90% methanol permeabilized RAW 264.7 (mouse Abelson murine leukemia virus-induced tumor macrophage) cell line labeling IGFBP2 with ab188200 at 1/60 (Red) compared with a Rabbit monoclonal IgG ([ab172730](#)) (Black) and an unlabelled control (cells without incubation with primary antibody and secondary antibody) (Blue). Goat anti rabbit IgG (Alexa Fluor® 488, [ab150077](#)), at 1/2000 dilution was used as the secondary antibody.

Why choose a recombinant antibody?



Anti-IGFBP2 antibody [EPR18012-257] (ab188200)

Please note: All products are "FOR RESEARCH USE ONLY. NOT FOR USE IN DIAGNOSTIC PROCEDURES"

Our Abpromise to you: Quality guaranteed and expert technical support

- Replacement or refund for products not performing as stated on the datasheet
- Valid for 12 months from date of delivery
- Response to your inquiry within 24 hours

- We provide support in Chinese, English, French, German, Japanese and Spanish
- Extensive multi-media technical resources to help you
- We investigate all quality concerns to ensure our products perform to the highest standards

If the product does not perform as described on this datasheet, we will offer a refund or replacement. For full details of the Abpromise, please visit <https://www.abcam.co.jp/abpromise> or contact our technical team.

Terms and conditions

- Guarantee only valid for products bought direct from Abcam or one of our authorized distributors