


### Anti-IGFBP1 antibody [EPR14472(B)] ab181141

リコンビナント RabMAb

★★★★☆ **1 Abreviews** **8 References** **画像数 3**

#### 製品の概要

製品名	Anti-IGFBP1 antibody [EPR14472(B)]
製品の詳細	Rabbit monoclonal [EPR14472(B)] to IGFBP1
由来種	Rabbit
アプリケーション	<b>適用あり:</b> WB
種交差性	<b>交差種:</b> Human <b>交差が予測される動物種:</b> Mouse, Rat 
免疫原	Synthetic peptide. This information is proprietary to Abcam and/or its suppliers.
ポジティブ・コントロール	Human placenta lysate; HepG2 whole cell lysate ( <b>ab7900</b> ).
特記事項	This product is a recombinant monoclonal antibody, which offers several advantages including: <ul style="list-style-type: none"><li>- High batch-to-batch consistency and reproducibility</li><li>- Improved sensitivity and specificity</li><li>- Long-term security of supply</li><li>- Animal-free production</li></ul> For more information <b>see here</b> . Our RabMAb <sup>®</sup> technology is a patented hybridoma-based technology for making rabbit monoclonal antibodies. For details on our patents, please refer to <b>RabMAb<sup>®</sup> patents</b> .

#### 製品の特性

製品の状態	Liquid
保存方法	Shipped at 4°C. Store at +4°C short term (1-2 weeks). Upon delivery aliquot. Store at -20°C long term. Avoid freeze / thaw cycle.
バッファー	Preservative: 0.01% Sodium azide Constituents: 40% Glycerol (glycerin, glycerine), 59% PBS, 0.05% BSA
精製度	Protein A purified
ポリ/モノ	モノクローナル
クローン名	EPR14472(B)
アイソタイプ	IgG

## アプリケーション

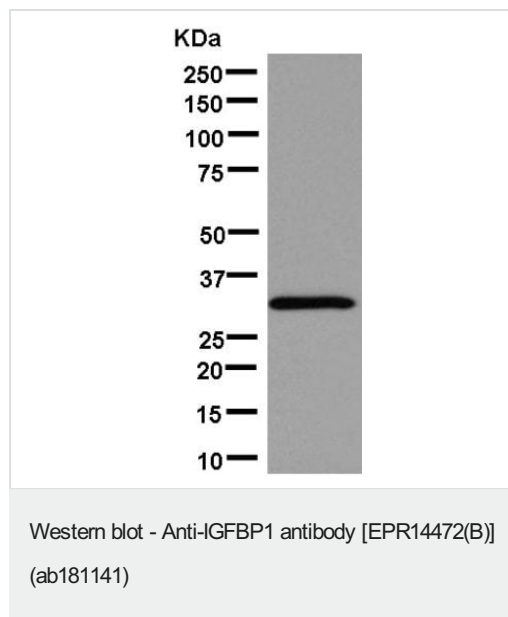
**The Abpromise guarantee** Abpromise保証は、次のテスト済みアプリケーションにおけるab181141の使用に適用されず  
アプリケーションノートには、推奨の開始希釈率がありますが、適切な希釈率につきましてはご確認ください。

アプリケーション	Abreviews	特記事項
WB	★★★★★ (1)	1/1000 - 1/2000. Detects a band of approximately 30 kDa (predicted molecular weight: 28 kDa).

## ターゲット情報

機能	IGF-binding proteins prolong the half-life of the IGFs and have been shown to either inhibit or stimulate the growth promoting effects of the IGFs on cell culture. They alter the interaction of IGFs with their cell surface receptors. Promotes cell migration.
配列類似性	Contains 1 IGFBP N-terminal domain. Contains 1 thyroglobulin type-1 domain.
翻訳後修飾	Phosphorylated; probably by casein kinase II. Alters the affinity of the protein for IGFs.
細胞内局在	Secreted.

## 画像



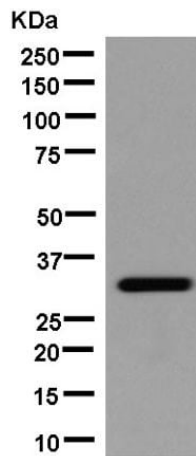
Anti-IGFBP1 antibody [EPR14472(B)] (ab181141) at 1/1000 dilution + HepG2 cell lysate at 20 µg

### Secondary

Goat Anti-Rabbit IgG H&L (HRP) ([ab136636](#)) at 1/500 dilution

**Predicted band size:** 28 kDa

**Observed band size:** 30 kDa



Western blot - Anti-IGFBP1 antibody [EPR14472(B)]  
(ab181141)

Anti-IGFBP1 antibody [EPR14472(B)] (ab181141) at 1/5000 dilution + Human placenta lysate at 20 µg

**Secondary**

Goat Anti-Rabbit IgG H&L (HRP) ([ab136636](#)) at 1/500 dilution

**Predicted band size:** 28 kDa

**Observed band size:** 30 kDa

Why choose a recombinant antibody?

 <b>Research with confidence</b> Consistent and reproducible results	 <b>Long-term and scalable supply</b> Recombinant technology
 <b>Success from the first experiment</b> Confirmed specificity	 <b>Ethical standards compliant</b> Animal-free production

Anti-IGFBP1 antibody [EPR14472(B)] (ab181141)

**Please note:** All products are "FOR RESEARCH USE ONLY. NOT FOR USE IN DIAGNOSTIC PROCEDURES"

**Our Abpromise to you: Quality guaranteed and expert technical support**

- Replacement or refund for products not performing as stated on the datasheet
- Valid for 12 months from date of delivery
- Response to your inquiry within 24 hours

- We provide support in Chinese, English, French, German, Japanese and Spanish
- Extensive multi-media technical resources to help you
- We investigate all quality concerns to ensure our products perform to the highest standards

If the product does not perform as described on this datasheet, we will offer a refund or replacement. For full details of the Abpromise, please visit <https://www.abcam.co.jp/abpromise> or contact our technical team.

### **Terms and conditions**

---

- Guarantee only valid for products bought direct from Abcam or one of our authorized distributors