


Anti-IGF2BP2/IMP-2 antibody ab117809

1 References [画像数 3](#)

製品の概要

製品名	Anti-IGF2BP2/IMP-2 antibody
製品の詳細	Rabbit polyclonal to IGF2BP2/IMP-2
由来種	Rabbit
アプリケーション	適用あり: WB, IP, IHC-P
種交差性	交差種: Human 交差が予測される動物種: Rabbit, Horse, Cow, Dog, Pig, Chimpanzee, Rhesus monkey, Gorilla 
免疫原	Synthetic peptide corresponding to Human IGF2BP2/IMP-2 aa 500-600. Database link: Q9Y6M1
ポジティブ・コントロール	WB: Whole cell lysate from 293T, Jurkat and HeLa cells. IHC-P: Human lung tissue.
特記事項	<p>The Life Science industry has been in the grips of a reproducibility crisis for a number of years. Abcam is leading the way in addressing this with our range of recombinant monoclonal antibodies and knockout edited cell lines for gold-standard validation. Please check that this product meets your needs before purchasing.</p> <p>If you have any questions, special requirements or concerns, please send us an inquiry and/or contact our Support team ahead of purchase. Recommended alternatives for this product can be found below, along with publications, customer reviews and Q&As</p>

製品の特性

製品の状態	Liquid
保存方法	Shipped at 4°C. Upon delivery aliquot and store at -20°C. Avoid freeze / thaw cycles.
バッファー	pH: 7 Preservative: 0.09% Sodium azide Constituent: 99% Tris citrate/phosphate
精製度	pH 7-8 Immunogen affinity purified
ポリ/モノ	ポリクローナル
アイソタイプ	IgG

アプリケーション

The Abpromise guarantee

Abpromise保証は、次のテスト済みアプリケーションにおけるab117809の使用に適用されます

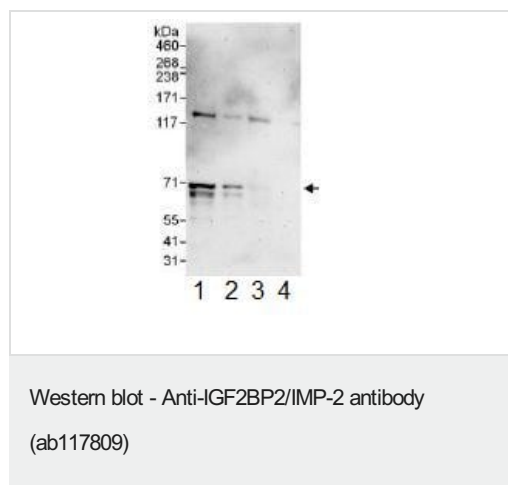
アプリケーションノートには、推奨の開始希釈率がありますが、適切な希釈率につきましてはご検討ください。

アプリケーション	Abreviews	特記事項
WB		1/2000 - 1/10000. Predicted molecular weight: 66 kDa.
IP		Use at 2-10 µg/mg of lysate.
IHC-P		1/500 - 1/2000. Epitope retrieval with citrate buffer pH 6.0 is recommended.

ターゲット情報

機能	Binds to the 5'-UTR of the insulin-like growth factor 2 (IGF2) mRNAs. Binding is isoform-specific. May regulate translation of target mRNAs.
組織特異性	Expressed in oocytes, granulosa cells of small and growing follicles, Leydig cells, spermatogonia and semen (at protein level). Expressed in testicular cancer (at protein level). Expressed weakly in heart, placenta, skeletal muscle, bone marrow, colon, kidney, salivary glands, testis and pancreas. Detected in fetal liver, fetal ovary, gonocytes and interstitial cells of the testis.
配列類似性	Belongs to the RRM IMP/VICKZ family. Contains 4 KH domains. Contains 2 RRM (RNA recognition motif) domains.
ドメイン	The third and fourth KH domains are important for binding to the untranslated region (UTR) of target mRNA.
細胞内局在	Cytoplasm. Localized in cytoplasmic mRNP granules containing untranslated mRNAs. Localizes at the connecting piece and the tail of the spermatozoa.

画像



All lanes : Anti-IGF2BP2/IMP-2 antibody (ab117809) at 0.1 µg/ml

Lane 1 : Whole cell lysate from 293T cells at 50 µg

Lane 2 : Whole cell lysate from 293T cells at 15 µg

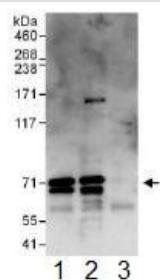
Lane 3 : Whole cell lysate from Jurkat cells at 50 µg

Lane 4 : Whole cell lysate from HeLa cells at 50 µg

Developed using the ECL technique.

Predicted band size: 66 kDa

Exposure time: 3 minutes



Immunoprecipitation - Anti-IGF2BP2/IMP-2 antibody
(ab117809)

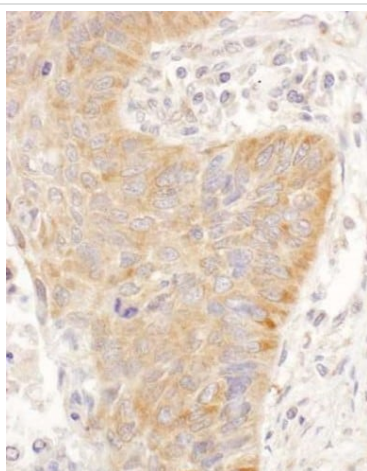
ab117809 at 1 µg/ml staining IGF2BP2/IMP-2 by WB, following immunoprecipitation of whole cell lysate from 293T cells.

Lane 1; IP using an antibody to an upstream epitope.

Lane 2; IP using ab117809 at 6 µg/mg lysate.

Lane 3; IP using control IgG.

1 mg of lysate was used for IP and 20% of IP was loaded. Detection utilised ECL with a 30 second exposure.



Immunohistochemistry (Formalin/PFA-fixed paraffin-embedded sections) - Anti-IGF2BP2/IMP-2 antibody
(ab117809)

Immunohistochemical (Formalin/PFA-fixed paraffin-embedded sections) analysis of human lung tissue sections using ab117809 at 1/1000 dilution.

Please note: All products are "FOR RESEARCH USE ONLY. NOT FOR USE IN DIAGNOSTIC PROCEDURES"

Our Abpromise to you: Quality guaranteed and expert technical support

- Replacement or refund for products not performing as stated on the datasheet
- Valid for 12 months from date of delivery
- Response to your inquiry within 24 hours
- We provide support in Chinese, English, French, German, Japanese and Spanish
- Extensive multi-media technical resources to help you
- We investigate all quality concerns to ensure our products perform to the highest standards

If the product does not perform as described on this datasheet, we will offer a refund or replacement. For full details of the Abpromise, please visit <https://www.abcam.co.jp/abpromise> or contact our technical team.

Terms and conditions

- Guarantee only valid for products bought direct from Abcam or one of our authorized distributors