


Anti-IGF1 Receptor + Insulin Receptor antibody [EPR2334(2)] ab172965

リコンビナント RabMAb

★★★★☆ **1 Abreviews** **2 References** **画像数 3**

製品の概要

製品名	Anti-IGF1 Receptor + Insulin Receptor antibody [EPR2334(2)]
製品の詳細	Rabbit monoclonal [EPR2334(2)] to IGF1 Receptor + Insulin Receptor
由来種	Rabbit
アプリケーション	適用あり: WB, IP 適用なし: Flow Cyt, ICC/IF or IHC-P
種交差性	交差種: Human 交差が予測される動物種: Mouse, Rat 
免疫原	Synthetic peptide. This information is proprietary to Abcam and/or its suppliers.
ポジティブ・コントロール	WB: 293T, HeLa, SK-OV-3, A549 cell lysates, fetal brain lysates.
特記事項	This product is a recombinant monoclonal antibody, which offers several advantages including: <ul style="list-style-type: none"> - High batch-to-batch consistency and reproducibility - Improved sensitivity and specificity - Long-term security of supply - Animal-free production For more information see here . Our RabMAb [®] technology is a patented hybridoma-based technology for making rabbit monoclonal antibodies. For details on our patents, please refer to RabMAb[®] patents .

製品の特性

製品の状態	Liquid
保存方法	Shipped at 4°C. Store at +4°C short term (1-2 weeks). Upon delivery aliquot. Store at -20°C long term. Avoid freeze / thaw cycle.
バッファー	pH: 7.20 Preservative: 0.01% Sodium azide Constituents: 9% PBS, 40% Glycerol (glycerin, glycerine), 0.05% BSA, 50% Tissue culture supernatant
精製度	Protein A purified

ポリ/モノ モノクローナル
クローン名 EPR2334(2)
アイソタイプ IgG

アプリケーション

The Abpromise guarantee **Abpromise保証は、次のテスト済みアプリケーションにおけるab172965の使用に適用されます**
アプリケーションノートには、推奨の開始希釈率がありますが、適切な希釈率につきましてはご検討ください。

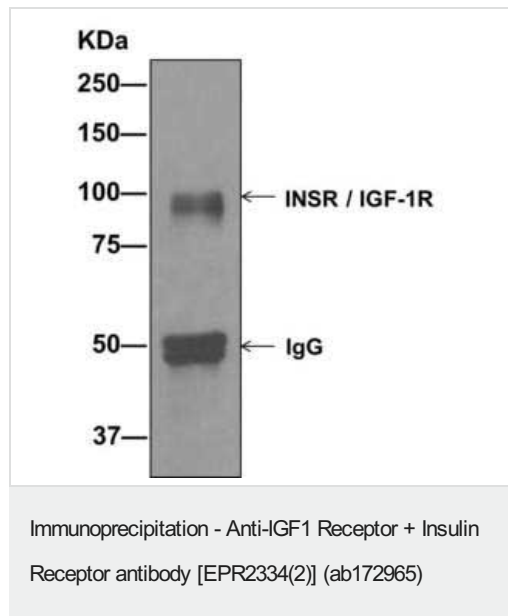
アプリケーション	Abreviews	特記事項
WB	★★★★★ (1)	1/10000 - 1/50000. Predicted molecular weight: 156 kDa.
IP		1/10 - 1/100.

追加情報 Is unsuitable for Flow Cyt, ICC/IF or IHC-P.

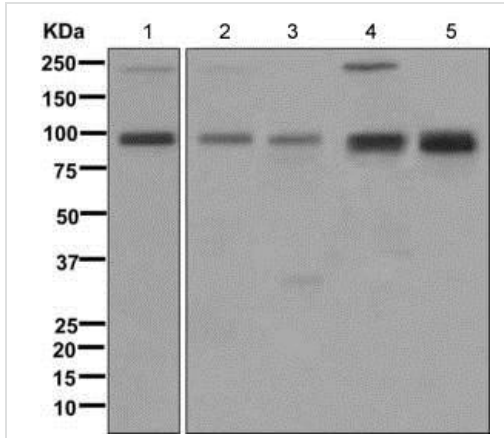
ターゲット情報

細胞内局在 IGF1 Receptor: Cell membrane. Insulin Receptor: Cell membrane.

画像



Western blot analysis on immunoprecipitation pellet from 293T cell lysate using ab172965.



Western blot - Anti-IGF1 Receptor + Insulin Receptor antibody [EPR2334(2)] (ab172965)

All lanes : Anti-IGF1 Receptor + Insulin Receptor antibody [EPR2334(2)] (ab172965) at 1/10000 dilution

Lane 1 : 293T cell lysate

Lane 2 : HeLa cell lysate

Lane 3 : SK-OV-3 cell lysate

Lane 4 : A459 cell lysate

Lane 5 : Fetal brain lysate

Lysates/proteins at 10 µg per lane.

Predicted band size: 156 kDa

Why choose a recombinant antibody?

Research with confidence
Consistent and reproducible results

Long-term and scalable supply
Recombinant technology

Success from the first experiment
Confirmed specificity

Ethical standards compliant
Animal-free production

Anti-IGF1 Receptor + Insulin Receptor antibody [EPR2334(2)] (ab172965)

Please note: All products are "FOR RESEARCH USE ONLY. NOT FOR USE IN DIAGNOSTIC PROCEDURES"

Our Abpromise to you: Quality guaranteed and expert technical support

- Replacement or refund for products not performing as stated on the datasheet
- Valid for 12 months from date of delivery
- Response to your inquiry within 24 hours
- We provide support in Chinese, English, French, German, Japanese and Spanish

- Extensive multi-media technical resources to help you
- We investigate all quality concerns to ensure our products perform to the highest standards

If the product does not perform as described on this datasheet, we will offer a refund or replacement. For full details of the Abpromise, please visit <https://www.abcam.co.jp/abpromise> or contact our technical team.

Terms and conditions

- Guarantee only valid for products bought direct from Abcam or one of our authorized distributors