

Anti-IGF1 antibody [EPR5098(2)] ab133542

リコンビナント **RabMAb**

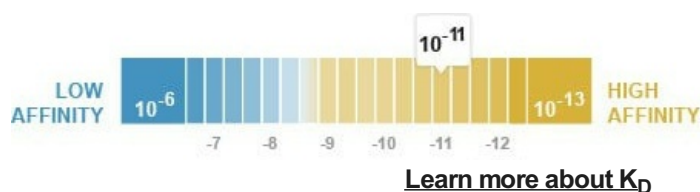
★★★★★ **1 Abreviews** **5 References** 画像数 **4**

製品の概要

製品名	Anti-IGF1 antibody [EPR5098(2)]
製品の詳細	Rabbit monoclonal [EPR5098(2)] to IGF1
由来種	Rabbit
アプリケーション	適用あり: ELISA, WB 適用なし: IHC-P or IP
種交差性	交差種: Human
免疫原	Synthetic peptide. This information is proprietary to Abcam and/or its suppliers.
ポジティブ・コントロール	IGF1 recombinant protein
特記事項	<p>This product is a recombinant monoclonal antibody, which offers several advantages including:</p> <ul style="list-style-type: none"> - High batch-to-batch consistency and reproducibility - Improved sensitivity and specificity - Long-term security of supply - Animal-free production <p>For more information see here.</p> <p>Our RabMAb[®] technology is a patented hybridoma-based technology for making rabbit monoclonal antibodies. For details on our patents, please refer to RabMAb[®] patents.</p> <p>Mouse, Rat: We have preliminary internal testing data to indicate this antibody may not react with these species. Please contact us for more information.</p>

製品の特性

製品の状態	Liquid
保存方法	Shipped at 4°C. Store at -20°C. Stable for 12 months at -20°C.
解離定数 (K _D 値)	K _D = 4.20 x 10 ⁻¹¹ M



バッファー	pH: 7.2 Preservative: 0.05% Sodium azide Constituents: 40% Glycerol (glycerin, glycerine), 9.85% Tris glycine, 50% Tissue culture supernatant
精製度	Protein A purified
ポリ/モノ	モノクローナル
クローン名	EPR5098(2)
アイソタイプ	IgG

アプリケーション

The Abpromise guarantee **Abpromise保証は、** 次のテスト済みアプリケーションにおけるab133542の使用に適用されます
アプリケーションノートには、推奨の開始希釈率がありますが、適切な希釈率につきましてはご検討ください。

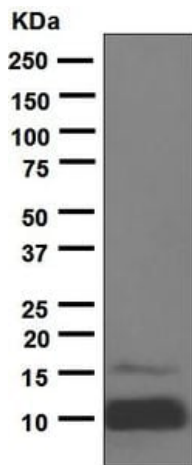
アプリケーション	Abreviews	特記事項
ELISA		Use at an assay dependent concentration.
WB	★★★★★ (1)	1/1000 - 1/10000. Predicted molecular weight: 22 kDa. Tested with recombinant protein.

追加情報 Is unsuitable for IHC-P or IP.

ターゲット情報

機能	The insulin-like growth factors, isolated from plasma, are structurally and functionally related to insulin but have a much higher growth-promoting activity. May be a physiological regulator of [1-14C]-2-deoxy-D-glucose (2DG) transport and glycogen synthesis in osteoblasts. Stimulates glucose transport in rat bone-derived osteoblastic (PyMS) cells and is effective at much lower concentrations than insulin, not only regarding glycogen and DNA synthesis but also with regard to enhancing glucose uptake.
関連疾患	Defects in IGF1 are the cause of insulin-like growth factor I deficiency (IGF1 deficiency) [MIM:608747]. IGF1 deficiency is an autosomal recessive disorder characterized by growth retardation, sensorineural deafness and mental retardation.
配列類似性	Belongs to the insulin family.
細胞内局在	Secreted.
製品の状態	There are 2 isoforms produced by alternative splicing. Isoform 1 also known as: IGF-IB; Isoform 2 also known as: IGF-IA.

画像

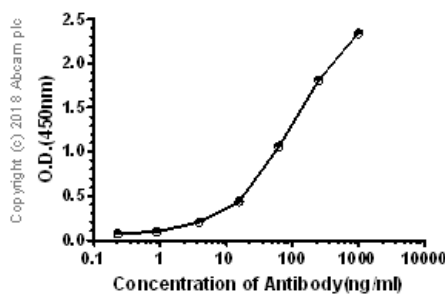


Western blot - Anti-IGF1 antibody [EPR5098(2)]
(ab133542)

Anti-IGF1 antibody [EPR5098(2)] (ab133542) at 1/1000 dilution +
Recombinant human IGF-I fragment at 0.005 μ g

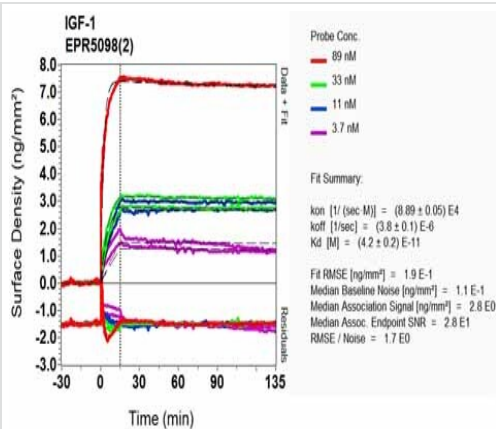
Predicted band size: 22 kDa

The recombinant IGF-I fragment corresponds to amino acids 49-118 of human IGF-1 with the molecular weight of 10kDa.



ELISA - Anti-IGF1 antibody [EPR5098(2)]
(ab133542)

Primary antibody, **ab33542** was used at concentrations between 0.1 - 1000ng/ml. An Alkaline Phosphatase AffiniPure Goat Anti-Rabbit IgG (H+L) was used as the secondary antibody at 1:2500 dilution. Antigen concentration was 1000ng/ml.



OIR-D Scanning - Anti-IGF1 antibody [EPR5098(2)]
(ab133542)

Equilibrium disassociation constant (K_D)

Learn more about K_D

[Click here to learn more about \$K_D\$](#)

Why choose a recombinant antibody?



Research with confidence
Consistent and reproducible results



Long-term and scalable supply
Recombinant technology



Success from the first experiment
Confirmed specificity



Ethical standards compliant
Animal-free production

Anti-IGF1 antibody [EPR5098(2)] (ab133542)

Please note: All products are "FOR RESEARCH USE ONLY. NOT FOR USE IN DIAGNOSTIC PROCEDURES"

Our Abpromise to you: Quality guaranteed and expert technical support

- Replacement or refund for products not performing as stated on the datasheet
- Valid for 12 months from date of delivery
- Response to your inquiry within 24 hours
- We provide support in Chinese, English, French, German, Japanese and Spanish
- Extensive multi-media technical resources to help you
- We investigate all quality concerns to ensure our products perform to the highest standards

If the product does not perform as described on this datasheet, we will offer a refund or replacement. For full details of the Abpromise, please visit <https://www.abcam.co.jp/abpromise> or contact our technical team.

Terms and conditions

- Guarantee only valid for products bought direct from Abcam or one of our authorized distributors