

Anti-IgE antibody [5D4] ab7295

1 References [画像数 1](#)

製品の概要

製品名	Anti-IgE antibody [5D4]
製品の詳細	Mouse monoclonal [5D4] to IgE
由来種	Mouse
特異性	Specific for IgE Ce2-domain specific
アプリケーション	適用あり: Sandwich ELISA
種交差性	交差種: Human
免疫原	Full length native protein (purified) corresponding to Human IgE. IgE from myelomatous human serum.
特記事項	<p>Concentration varies from lot to lot and can be provided on request.</p> <p>The Life Science industry has been in the grips of a reproducibility crisis for a number of years. Abcam is leading the way in addressing this with our range of recombinant monoclonal antibodies and knockout edited cell lines for gold-standard validation. Please check that this product meets your needs before purchasing.</p> <p>If you have any questions, special requirements or concerns, please send us an inquiry and/or contact our Support team ahead of purchase. Recommended alternatives for this product can be found below, along with publications, customer reviews and Q&As</p>

製品の特性

製品の状態	Liquid
保存方法	Shipped at 4°C. Upon delivery aliquot and store at -20°C. Avoid freeze / thaw cycles.
バッファー	<p>pH: 7.40</p> <p>Preservative: 0.09% Sodium azide</p> <p>Constituent: 99.91% PBS</p>
精製度	Protein A purified
特記事項 (精製)	Purified by chromatography on protein A Sepharose. Purity is tested by electrophoresis.
ポリ/モノ	モノクローナル
クローン名	5D4
ミエローマ	Sp2/0
アイソタイプ	IgG2a

アプリケーション

The Abpromise guarantee **Abpromise保証は、**次のテスト済みアプリケーションにおけるab7295の使用に適用されます
アプリケーションノートには、推奨の開始希釈率がありますが、適切な希釈率につきましてはご検討ください。

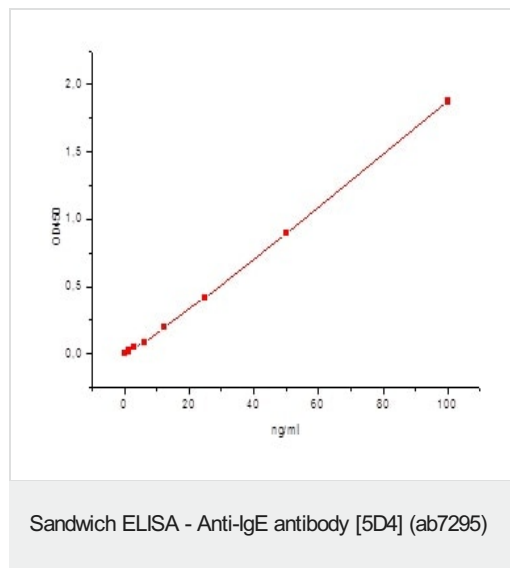
アプリケーション	Abreviews	特記事項
Sandwich ELISA		Use at an assay dependent concentration. Can be used as Capture antibody with recommended pair.

ターゲット情報

関連性 IgE is the class of antibodies produced in the lungs, skin, and mucous membranes. It may protect against parasite invasion, but it is a major factor in allergic reactions. The antigen-specific IgE interacts with mast cells and eosinophils, triggers the release of histamine, leukotrienes and other substances that lead to the itching, sneezing and congestion of allergies - and the life threatening respiratory distress of asthma and anaphylactic shock.

細胞内局在 Cell Membrane

画像



Standard curve: Capture antibody (ab7295) at 5 ug/ml in PBS, human IgE from 100 ng/ml to 1.56 ng/ml, detection antibody (**ab7294**, HRP conjugated) at 0.7 ug/ml concentration.

Please note: All products are "FOR RESEARCH USE ONLY. NOT FOR USE IN DIAGNOSTIC PROCEDURES"

Our Abpromise to you: Quality guaranteed and expert technical support

- Replacement or refund for products not performing as stated on the datasheet
- Valid for 12 months from date of delivery
- Response to your inquiry within 24 hours

- We provide support in Chinese, English, French, German, Japanese and Spanish
- Extensive multi-media technical resources to help you
- We investigate all quality concerns to ensure our products perform to the highest standards

If the product does not perform as described on this datasheet, we will offer a refund or replacement. For full details of the Abpromise, please visit <https://www.abcam.co.jp/abpromise> or contact our technical team.

Terms and conditions

- Guarantee only valid for products bought direct from Abcam or one of our authorized distributors