

Anti-IgA Secretory Component antibody [SC-05] ab3924

★★★★★ [1 Abreviews](#) [5 References](#) [画像数 1](#)

製品の概要

製品名	Anti-IgA Secretory Component antibody [SC-05]
製品の詳細	Mouse monoclonal [SC-05] to IgA Secretory Component
由来種	Mouse
特異性	ab3924 reacts with 80 kDa human secretory component glycoprotein (both free and bound in secretory IgA). The recognized glycoprotein is a specific membrane marker of glandular carcinomas.
アプリケーション	適用あり: WB
種交差性	交差種: Human
免疫原	Full length native protein (purified) corresponding to Human IgA Secretory Component. Affinity-purified secretory component from human colostrum.
ポジティブ・コントロール	WB: MCF7 and MDA-MB-361 cell lysates.
特記事項	<p>Examples of positive human tissues: secretory mucosa of gastrointestinal and respiratory tract, epithelia of salivary glands, endometrium, endocervix, kidney, prostate, mammary gland.</p> <p>The Life Science industry has been in the grips of a reproducibility crisis for a number of years. Abcam is leading the way in addressing this with our range of recombinant monoclonal antibodies and knockout edited cell lines for gold-standard validation. Please check that this product meets your needs before purchasing.</p> <p>If you have any questions, special requirements or concerns, please send us an inquiry and/or contact our Support team ahead of purchase. Recommended alternatives for this product can be found below, along with publications, customer reviews and Q&As</p>

製品の特性

製品の状態	Liquid
保存方法	Shipped at 4°C. Store at +4°C short term (1-2 weeks). Upon delivery aliquot. Store at -20°C or -80°C. Avoid freeze / thaw cycle.
バッファー	pH: 7.40 Preservative: 0.097% Sodium azide Constituent: PBS
精製度	Protein A purified

特記事項 (精製)	Purified from hybridoma culture supernatant. Purity >95% by SDS-PAGE.
一次抗体 備考	Examples of positive human tissues: secretory mucosa of gastrointestinal and respiratory tract, epithelia of salivary glands, endometrium, endocervix, kidney, prostate, mammary gland.
ポリ/モノ	モノクローナル
クローン名	SC-05
アイソタイプ	IgG1

アプリケーション

The Abpromise guarantee Abpromise保証は、次のテスト済みアプリケーションにおけるab3924の使用に適用されます

アプリケーションノートには、推奨の開始希釈率がありますが、適切な希釈率につきましてはご検討ください。

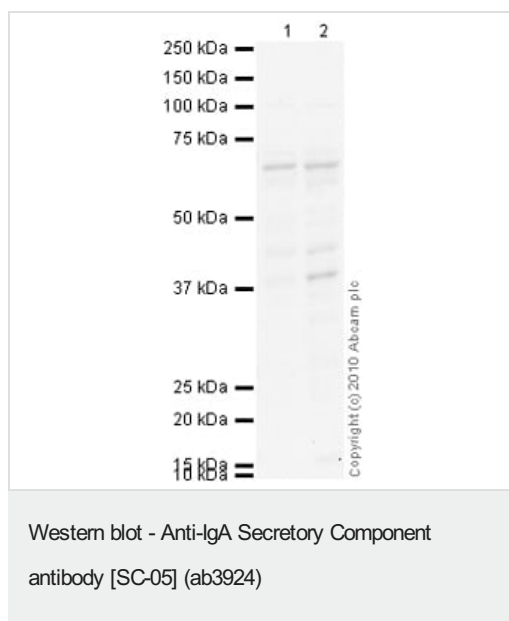
アプリケーション	Abreviews	特記事項
WB		Use a concentration of 1 - 2 µg/ml. Detects a band of approximately 68 kDa (predicted molecular weight: 61 kDa). See Abreview. Use under non-reducing conditions.

ターゲット情報

関連性

IgA has two subclasses (IgA1 and IgA2) and can be produced as a monomeric as well as a dimeric form. The IgA dimeric form is the most prevalent and is also called secretory IgA (sIgA). The secretory component of sIgA protects the immunoglobulin from being degraded by proteolytic enzymes, thus sIgA can survive in the harsh gastrointestinal tract environment and provide protection against microbes that multiply in body secretions. sIgA can also inhibit inflammatory effects of other immunoglobulins. Secretory component is a proteolytic cleavage product of the polymeric immunoglobulin receptor which remains associated with dimeric IgA in sero-mucus secretions. Polymeric IgA binds to the polymeric immunoglobulin receptor on the basolateral surface of epithelial cells and is taken up into the cell via transcytosis. The receptor-IgA complex passes through the cellular compartments before being secreted on the luminal surface of the epithelial cells, still attached to the receptor. Proteolysis of the receptor occurs and the dimeric IgA molecule, along with the secretory component, are free to diffuse throughout the lumen. Secretory components wrap around two IgA units joined by a J chain protein fragment, resulting in a Y-shaped configuration, with each of the two antigen binding regions of the two constituent Y-shaped antibodies exposed. One identified function of secretory components is to protect IgA antibodies from degradation by the gastric acids and enzymes of the digestive system. This property is especially important in the transfer of immune system components during breastfeeding.

画像



All lanes : Anti-IgA Secretory Component antibody [SC-05] (ab3924) at 1 µg/ml

Lane 1 : MCF7 (Human breast adenocarcinoma cell line) Whole Cell Lysate

Lane 2 : MDA-MB-361 (Human breast adenocarcinoma cell line) Whole Cell Lysate Whole Cell Lysate

Lysates/proteins at 10 µg per lane.

Secondary

All lanes : Goat Anti-Mouse IgG H&L (HRP) preadsorbed (**ab97040**) at 1/5000 dilution

Developed using the ECL technique.

Performed under reducing conditions.

Predicted band size: 61 kDa

Observed band size: 68 kDa

Additional bands at: 38 kDa. We are unsure as to the identity of these extra bands.

Exposure time: 20 minutes

Secretory Component Glycoprotein contains a number of potential glycosylation sites (SwissProt) which may explain its migration at a higher molecular weight than predicted.

Please note: All products are "FOR RESEARCH USE ONLY. NOT FOR USE IN DIAGNOSTIC PROCEDURES"

Our Abpromise to you: Quality guaranteed and expert technical support

- Replacement or refund for products not performing as stated on the datasheet
- Valid for 12 months from date of delivery
- Response to your inquiry within 24 hours

- We provide support in Chinese, English, French, German, Japanese and Spanish
- Extensive multi-media technical resources to help you
- We investigate all quality concerns to ensure our products perform to the highest standards

If the product does not perform as described on this datasheet, we will offer a refund or replacement. For full details of the Abpromise, please visit <https://www.abcam.co.jp/abpromise> or contact our technical team.

Terms and conditions

- Guarantee only valid for products bought direct from Abcam or one of our authorized distributors