

### Anti-IgA antibody [EPR5367-76] ab124716

リコンビナント **RabMAb**

★★★★★ **2 Abreviews** **5 References** 画像数 5

#### 製品の概要

製品名	Anti-IgA antibody [EPR5367-76]
製品の詳細	Rabbit monoclonal [EPR5367-76] to IgA
由来種	Rabbit
特異性	This antibody reacts with Heavy chain of IgA. It does not react with either kappa or lambda light chain. It does not react with other Ig.
アプリケーション	<b>適用あり:</b> WB, IP, ELISA, IHC-P
種交差性	<b>交差種:</b> Human
免疫原	Full length native protein (purified) corresponding to Human IgA.
ポジティブ・コントロール	Human tonsil, Human plasma, and Human spleen lysates; Human colon tissue, Human tonsil tissue.
特記事項	<p>This product is a recombinant monoclonal antibody, which offers several advantages including:</p> <ul style="list-style-type: none"> <li>- High batch-to-batch consistency and reproducibility</li> <li>- Improved sensitivity and specificity</li> <li>- Long-term security of supply</li> <li>- Animal-free production</li> </ul> <p>For more information <a href="#">see here</a>.</p> <p>Our RabMAb<sup>®</sup> technology is a patented hybridoma-based technology for making rabbit monoclonal antibodies. For details on our patents, please refer to <a href="#">RabMAb<sup>®</sup> patents</a>.</p> <p>Mouse, Rat: We have preliminary internal testing data to indicate this antibody may not react with these species. Please contact us for more information.</p>

#### 製品の特性

製品の状態	Liquid
保存方法	Shipped at 4°C. Upon delivery aliquot and store at -20°C. Avoid repeated freeze / thaw cycles.
バッファー	<p>pH: 7.20</p> <p>Preservative: 0.05% Sodium azide</p> <p>Constituents: 0.1% BSA, 40% Glycerol (glycerin, glycerine), 9.85% Tris glycine, 50% Tissue culture supernatant</p>

精製度	Protein A purified
ポリ/モノ	モノクローナル
クローン名	EPR5367-76
アイソタイプ	IgG

## アプリケーション

The Abpromise guarantee **Abpromise保証は、次のテスト済みアプリケーションにおけるab124716の使用に適用されます**  
 アプリケーションノートには、推奨の開始希釈率がありますが、適切な希釈率につきましてはご検討ください。

アプリケーション	Abreviews	特記事項
WB		1/1000 - 1/10000. Predicted molecular weight: 37 kDa.
IP		1/10 - 1/100.
ELISA		1/250 - 1/4000.
IHC-P	★★★★★ (1)	1/100 - 1/250. Perform heat mediated antigen retrieval before commencing with IHC staining protocol.

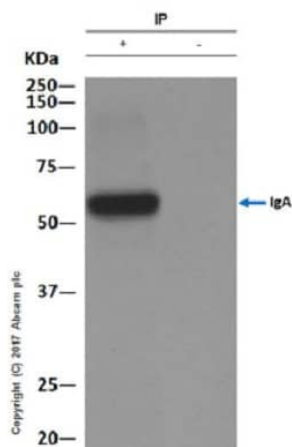
## ターゲット情報

**関連性**

Human IgA (immunoglobulin A) is a glycosylated protein of 160 kDa and is produced as a monomer or as a J chain linked dimer. Monomeric IgA constitutes 5-15 % of the serum immunoglobulins whereas dimeric IgA is localized to mucosa surfaces such as saliva, gastrointestinal secretion, bronchial fluids and milk. Mucosal IgA plays a major role in host defence by neutralising infectious agents at mucosal surfaces. The production is usually local and antigen specific IgA producing B cells can be found in regions under the lamina propria where they mature into dimeric IgA producing plasma cells. IgA deficiency is the most common immunodeficiency that may affect both serum and mucosal produced IgA. OR: The secretory component is a component of immunoglobulin A (IgA) which consists of a portion of the polymeric immunoglobulin receptor. Polymeric IgA binds to the polymeric immunoglobulin receptor on the basolateral surface of epithelial cells and is taken up into the cell via transcytosis. The receptor-IgA complex passes through the cellular compartments before being secreted on the luminal surface of the epithelial cells, still attached to the receptor. Proteolysis of the receptor occurs and the dimeric IgA molecule, along with the secretory component, are free to diffuse throughout the lumen.

**細胞内局在** Secreted

## 画像



Immunoprecipitation - Anti-IgA antibody [EPR5367-76] (ab124716)

Capture ab 1:60 dilution (1µg in 1mg lysate). Primary ab for WB ab124716 at 1:1000 dilution (0.18µg/ml). Secondary ab Anti-Rabbit IgG (HRP), specific to the non5% NFDm/TBST -reduced form of IgG. Secondary ab concentration 1:1500 dilution. Blocking buffer and concentration 5% NFDm/TBST. Diluting buffer and concentration 5% NFDm/TBST Lane 1 (+) Human plasma Lane 2 (-) Rabbit monoclonal IgG (**ab172730**) instead of ab124716 in Human plasma

**All lanes :** Anti-IgA antibody [EPR5367-76] (ab124716) at 0.18 µg/ml (ab124716 at 1:1000 dilution (0.18µg/ml))

**Lane 1 :** Human plasma with NFDm/TBST

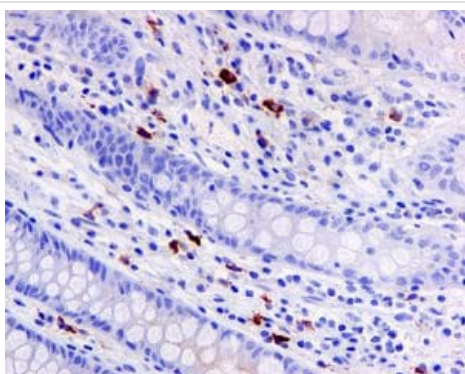
**Lane 2 :** Rabbit monoclonal IgG (**ab172730**) instead of ab124716 in Human plasma with NFDm/TBST

Blocking peptides at 5 % per lane.

### Secondary

**All lanes :** Anti-Rabbit IgG (HRP), specific to the non-reduced form of IgG at 1/1500 dilution

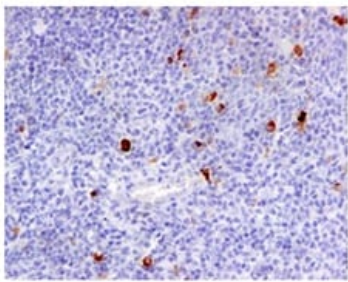
**Observed band size:** 60 kDa



Immunohistochemistry (Formalin/PFA-fixed paraffin-embedded sections) - Anti-IgA antibody [EPR5367-76] (ab124716)

ab124716, at 1/100, staining IgA in paraffin embedded Human colon tissue by Immunohistochemistry.

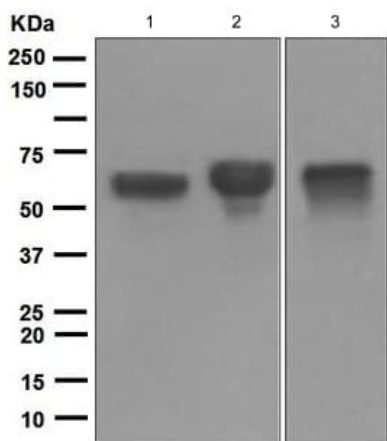
Perform heat mediated antigen retrieval before commencing with IHC staining protocol.



Immunohistochemistry (Formalin/PFA-fixed paraffin-embedded sections) - Anti-IgA antibody [EPR5367-76] (ab124716)

ab124716, at 1/100, staining IgA in paraffin embedded Human tonsil tissue by Immunohistochemistry.

Perform heat mediated antigen retrieval before commencing with IHC staining protocol.



Western blot - Anti-IgA antibody [EPR5367-76] (ab124716)

**All lanes :** Anti-IgA antibody [EPR5367-76] (ab124716) at 1/1000 dilution

**Lane 1 :** Human tonsil lysate

**Lane 2 :** Human plasma lysate

**Lane 3 :** Human spleen lysate

Lysates/proteins at 10 µg per lane.

#### Secondary

**All lanes :** HRP labelled goat anti-rabbit at 1/2000 dilution

**Predicted band size:** 37 kDa

#### Why choose a recombinant antibody?



**Research with confidence**  
Consistent and reproducible results



**Long-term and scalable supply**  
Recombinant technology



**Success from the first experiment**  
Confirmed specificity



**Ethical standards compliant**  
Animal-free production

Anti-IgA antibody [EPR5367-76] (ab124716)

**Please note:** All products are "FOR RESEARCH USE ONLY. NOT FOR USE IN DIAGNOSTIC PROCEDURES"

### **Our Abpromise to you: Quality guaranteed and expert technical support**

---

- Replacement or refund for products not performing as stated on the datasheet
- Valid for 12 months from date of delivery
- Response to your inquiry within 24 hours
  
- We provide support in Chinese, English, French, German, Japanese and Spanish
- Extensive multi-media technical resources to help you
- We investigate all quality concerns to ensure our products perform to the highest standards

If the product does not perform as described on this datasheet, we will offer a refund or replacement. For full details of the Abpromise, please visit <https://www.abcam.co.jp/abpromise> or contact our technical team.

### **Terms and conditions**

---

- Guarantee only valid for products bought direct from Abcam or one of our authorized distributors