

Anti-IFITM1 antibody [EPR22620-12] ab233545

リコンビナント **RabMAb**

1 References 画像数 7

製品の概要

製品名	Anti-IFITM1 antibody [EPR22620-12]
製品の詳細	Rabbit monoclonal [EPR22620-12] to IFITM1
由来種	Rabbit
アプリケーション	適用あり: Flow Cyt (Intra), WB, ICC/IF, IP, IHC-P
種交差性	交差種: Human
免疫原	Synthetic peptide. This information is proprietary to Abcam and/or its suppliers.
ポジティブ・コントロール	WB: K562, TF-1 and HeLa whole cell lysates. IP: K562 whole cell lysate. IHC-P: Human cerebrum and tonsil tissue. ICC/IF: K562 cells. Flow Cyt (intra): K562 cells.
特記事項	<p>This product is a recombinant monoclonal antibody, which offers several advantages including:</p> <ul style="list-style-type: none"> - High batch-to-batch consistency and reproducibility - Improved sensitivity and specificity - Long-term security of supply - Animal-free production <p>For more information see here.</p> <p>Our RabMAb[®] technology is a patented hybridoma-based technology for making rabbit monoclonal antibodies. For details on our patents, please refer to RabMAb[®] patents.</p>

製品の特性

製品の状態	Liquid
保存方法	Shipped at 4°C. Store at +4°C short term (1-2 weeks). Upon delivery aliquot. Store at -20°C long term. Avoid freeze / thaw cycle.
バッファー	<p>pH: 7.2</p> <p>Preservative: 0.01% Sodium azide</p> <p>Constituents: 40% Glycerol, 0.05% BSA, PBS</p>
精製度	Protein A purified
ポリ/モノ	モノクローナル
クローン名	EPR22620-12
アイソタイプ	IgG

アプリケーション

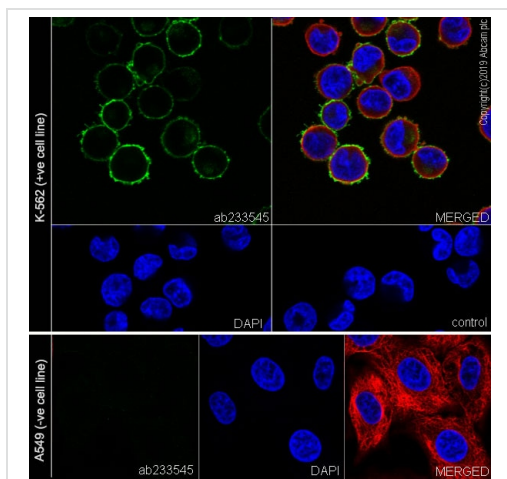
The Abpromise guarantee Abpromise保証は、 次のテスト済みアプリケーションにおけるab233545の使用に適用されます
アプリケーションノートには、推奨の開始希釈率がありますが、適切な希釈率につきましてはご確認ください。

アプリケーション	Abreviews	特記事項
Flow Cyt (Intra)		1/500.
WB		1/2000. Detects a band of approximately 17 kDa (predicted molecular weight: 13 kDa).
ICC/IF		1/500.
IP		1/30.
IHC-P		1/2000. Perform heat mediated antigen retrieval with Tris/EDTA buffer pH 9.0 before commencing with IHC staining protocol.

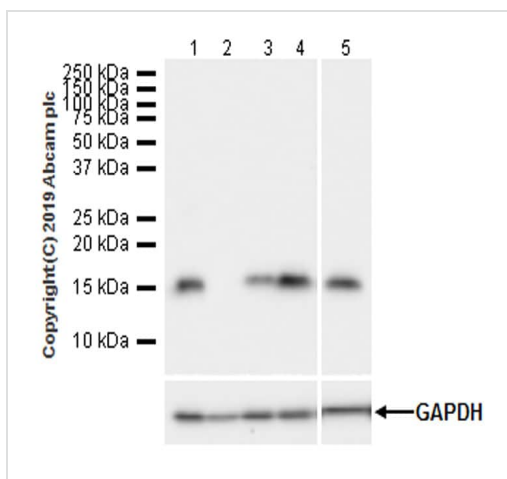
ターゲット情報

機能	IFN-induced antiviral protein that mediate cellular innate immunity to at least three major human pathogens, namely influenza A H1N1 virus, West Nile virus, and dengue virus by inhibiting the early step(s) of replication. Plays a key role in the antiproliferative action of IFN-gamma either by inhibiting the ERK activation or by arresting cell growth in G1 phase in a p53-dependent manner. Implicated in the control of cell growth. Component of a multimeric complex involved in the transduction of antiproliferative and homotypic adhesion signals.
配列類似性	Belongs to the CD225 family.
翻訳後修飾	Palmitoylation on membrane-proximal cysteines controls clustering in membrane compartments and antiviral activity against influenza virus.
細胞内局在	Cell membrane.

画像



Immunocytochemistry/ Immunofluorescence - Anti-IFITM1 antibody [EPR22620-12] (ab233545)



Western blot - Anti-IFITM1 antibody [EPR22620-12] (ab233545)

Immunofluorescent analysis of 4% paraformaldehyde-fixed, 0.1% Triton X-100 permeabilized K562 (human chronic myelogenous leukemia cell line from bone marrow) or A549 (human lung carcinoma cell line) cells labeling IFITM1 with ab233545 at 1/500 dilution, followed by Goat Anti-Rabbit IgG H&L (Alexa Fluor® 488) ([ab150077](#)) secondary antibody at 1/1000 dilution (green).

Confocal image showing membranous staining in K-562 cells.

Negative control: A549 (PMID: 25105503). The nuclear counter stain is DAPI (blue). Tubulin is detected with Anti-alpha Tubulin antibody [DM1A] - Microtubule Marker (Alexa Fluor® 594) ([ab195889](#)) at 1/200 dilution (red).

PBS only control: Use PBS instead of primary antibody, followed by Goat Anti-Rabbit IgG H&L (Alexa Fluor® 488) ([ab150077](#)) secondary antibody at 1/1000 dilution.

All lanes : Anti-IFITM1 antibody [EPR22620-12] (ab233545) at 1/2000 dilution

Lane 1 : K562 (human chronic myelogenous leukemia cell line from bone marrow) whole cell lysate

Lane 2 : A549 (human lung carcinoma cell line) whole cell lysate

Lane 3 : Untreated HeLa (human epithelial cell line from cervix adenocarcinoma) whole cell lysate

Lane 4 : HeLa, treated with 10ng/ml hIFN-α for 16 hours, whole cell lysate

Lane 5 : TF-1 (human bone marrow erythroleukemia cell line) whole cell lysate

Lysates/proteins at 20 µg per lane.

Secondary

All lanes : Goat Anti-Rabbit IgG H&L (HRP) ([ab97051](#)) at 1/100000 dilution

Predicted band size: 13 kDa

Observed band size: 17 kDa

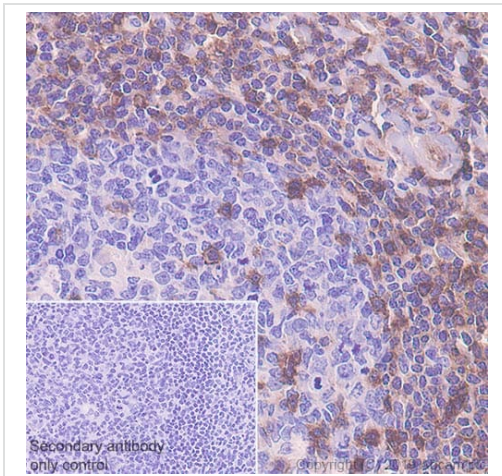
Exposure time: 8 seconds

Blocking and dilution buffer: 5% NFDm/TBST.

The molecular weight observed is consistent with what has been described in the literature (PMID: 25105503) IFN-α induce the

expression of IFITM1(PMID: 27852071).

Negative control: A549 (PMID: 25105503).



Immunohistochemistry (Formalin/PFA-fixed paraffin-embedded sections) - Anti-IFITM1 antibody [EPR22620-12] (ab233545)

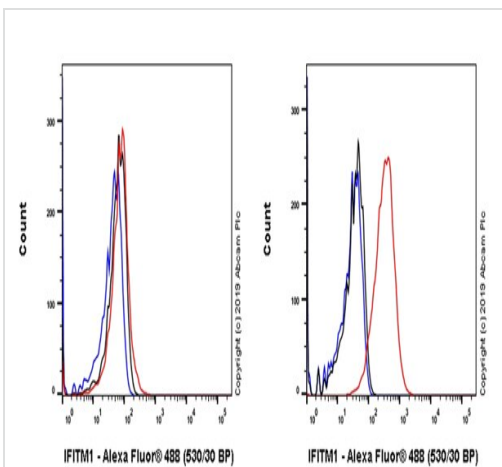
Immunohistochemical analysis of paraffin-embedded human tonsil tissue labeling IFITM1 with ab233545 at 1/2000 dilution, followed by Rabbit specific IHC polymer detection kit HRP/DAB (**ab209101**). Positive staining on lymphocytes of human tonsil is observed. Counter stained with hematoxylin.

Secondary antibody only control: Used PBS instead of primary antibody, secondary antibody is Rabbit specific IHC polymer detection kit HRP/DAB (**ab209101**).

Heat mediated antigen retrieval with Tris-EDTA buffer (pH 9.0, epitope retrieval solution 2) for 20 mins.

The section was incubated with ab233545 for 10 mins at room temperature.

The immunostaining was performed on a Leica Biosystems BOND® RX instrument.

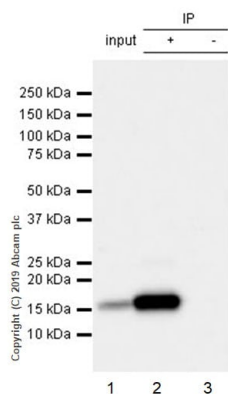


Flow Cytometry (Intracellular) - Anti-IFITM1 antibody [EPR22620-12] (ab233545)

Intracellular flow cytometric analysis of 4% paraformaldehyde-fixed, 90% methanol-fixed K562 (human chronic myelogenous leukemia cell line from bone marrow) (Right) or A549 (human lung carcinoma cell line) (Left) cells labeling IFITM1 with ab233545 at 1/500 (red) compared with a Recombinant Rabbit IgG, monoclonal [EPR25A] - Isotype Control (**ab172730**) (black) and an unlabelled control (cells without incubation with primary antibody and secondary antibody) (blue).

Goat Anti-Rabbit IgG H&L (Alexa Fluor® 488) (**ab150077**), at 1/2000 dilution was used as the secondary antibody.

Negative control: A549 (PMID: 25105503).



Immunoprecipitation - Anti-IFITM1 antibody
[EPR22620-12] (ab233545)

IFITM1 was immunoprecipitated from 0.35 mg of K562 (human chronic myelogenous leukemia cell line from bone marrow) whole cell lysate with ab233545 at 1/30 dilution. Western blot was performed from the immunoprecipitate using ab233545 at 1/1000 dilution. VeriBlot for IP Detection Reagent (HRP) ([ab131366](#)), was used as secondary antibody at 1/5000 dilution.

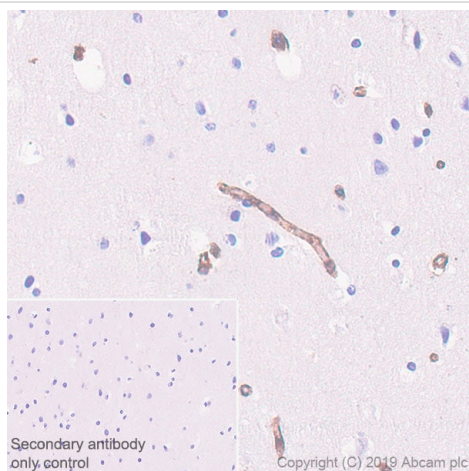
Lane 1: K562 whole cell lysate 10 µg (Input).

Lane 2: ab233545 IP in K562 whole cell lysate.

Lane 3: Rabbit monoclonal IgG ([ab172730](#)) instead of ab233545 in K562 whole cell lysate.

Blocking and dilution buffer and concentration: 5% NFDM/TBST.

Exposure time: 3 seconds.



Immunohistochemistry (Formalin/PFA-fixed paraffin-embedded sections) - Anti-IFITM1 antibody
[EPR22620-12] (ab233545)

Immunohistochemical analysis of paraffin-embedded human cerebrum tissue labeling IFITM1 with ab233545 at 1/2000 dilution, followed by Rabbit specific IHC polymer detection kit HRP/DAB ([ab209101](#)). Positive staining on blood vessels of human cerebrum (PMID: 24603679). Counter stained with hematoxylin.

Secondary antibody only control: Used PBS instead of primary antibody, secondary antibody is Rabbit specific IHC polymer detection kit HRP/DAB ([ab209101](#)).

Heat mediated antigen retrieval with Tris-EDTA buffer (pH 9.0, epitope retrieval solution 2) for 20 mins.

The section was incubated with ab233545 for 10 mins at room temperature.

The immunostaining was performed on a Leica Biosystems BOND® RX instrument.

Why choose a recombinant antibody?



Research with confidence
Consistent and reproducible results



Long-term and scalable supply
Recombinant technology



Success from the first experiment
Confirmed specificity



Ethical standards compliant
Animal-free production

Anti-IFITM1 antibody [EPR22620-12] (ab233545)

Please note: All products are "FOR RESEARCH USE ONLY. NOT FOR USE IN DIAGNOSTIC PROCEDURES"

Our Abpromise to you: Quality guaranteed and expert technical support

- Replacement or refund for products not performing as stated on the datasheet
- Valid for 12 months from date of delivery
- Response to your inquiry within 24 hours
- We provide support in Chinese, English, French, German, Japanese and Spanish
- Extensive multi-media technical resources to help you
- We investigate all quality concerns to ensure our products perform to the highest standards

If the product does not perform as described on this datasheet, we will offer a refund or replacement. For full details of the Abpromise, please visit <https://www.abcam.co.jp/abpromise> or contact our technical team.

Terms and conditions

- Guarantee only valid for products bought direct from Abcam or one of our authorized distributors