

Anti-IDH1 (mutated R132G) antibody [GMab-r1] ab264050

リコンビナント

1 References [画像数 3](#)

製品の概要

製品名	Anti-IDH1 (mutated R132G) antibody [GMab-r1]
製品の詳細	Rat monoclonal [GMab-r1] to IDH1 (mutated R132G)
由来種	Rat
アプリケーション	適用あり: Indirect ELISA, WB
種交差性	交差種: Human
免疫原	Synthetic peptide. This information is proprietary to Abcam and/or its suppliers.
ポジティブ・コントロール	WB: His-tagged human IDH1 mutated R132G (aa1-414) recombinant protein.
特記事項	<p>This antibody clone is manufactured by Abcam. If you require a custom buffer formulation or conjugation for your experiments, please contact orders@abcam.com.</p> <p>This product is a recombinant monoclonal antibody, which offers several advantages including:</p> <ul style="list-style-type: none">- High batch-to-batch consistency and reproducibility- Improved sensitivity and specificity- Long-term security of supply- Animal-free production <p>For more information see here.</p>

製品の特性

製品の状態	Liquid
保存方法	Shipped at 4°C. Store at +4°C short term (1-2 weeks). Upon delivery aliquot. Store at -20°C long term. Avoid freeze / thaw cycle.
バッファー	pH: 7.2 Preservative: 0.01% Sodium azide Constituents: PBS, 0.05% BSA, 40% Glycerol (glycerin, glycerine)
精製度	Ion Exchange Chromatography
ポリ/モノ	モノクローナル
クローン名	GMab-r1
アイソタイプ	IgG2a
軽鎖の種類	kappa

アプリケーション

The Abpromise guarantee **Abpromise保証は、** 次のテスト済みアプリケーションにおけるab264050の使用に適用されます
アプリケーションノートには、推奨の開始希釈率がありますが、適切な希釈率につきましてはご検討ください。

アプリケーション	Abreviews	特記事項
Indirect ELISA		Use a concentration of 4.058 µg/ml.
WB		Use a concentration of 1.266 µg/ml. Predicted molecular weight: 46 kDa.

ターゲット情報

関連疾患

Glioma

Genetic variations are associated with cartilaginous tumors such as enchondroma or chondrosarcoma. Mutations of Arg-132 to Cys, Gly or His abolish the conversion of isocitrate to alpha-ketoglutarate. Instead, alpha-ketoglutarate is converted to R(-)-2-hydroxyglutarate.

配列類似性

Belongs to the isocitrate and isopropylmalate dehydrogenases family.

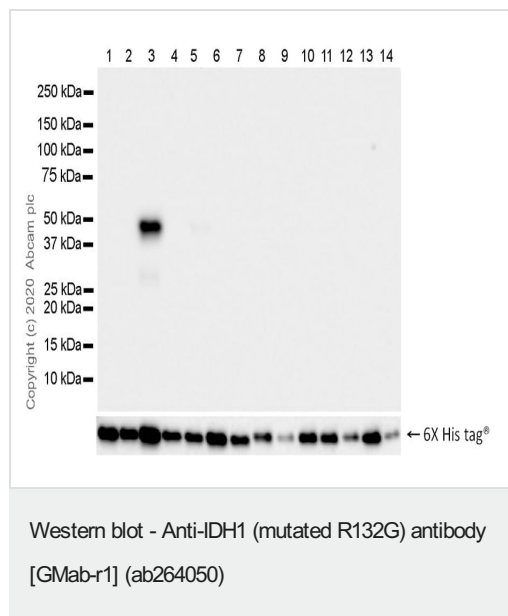
翻訳後修飾

Acetylation at Lys-374 dramatically reduces catalytic activity.

細胞内局在

Cytoplasm. Peroxisome.

画像



Western blot - Anti-IDH1 (mutated R132 G) antibody [GMab-r1] (ab264050).

ab264050 used at a 1/1000 dilution (1.266µg/ml) followed by Goat Anti-Rat IgG (H+L), HRP (**ab205720**) used at a 1/10,000 dilution.

Blocking/Dilution buffer: 5% NFDm/TBST.

Lane 1: His-tagged human IDH1 (aa1-414) recombinant protein 10ng

Lane 2: His-tagged human IDH1 mutated R132H (aa1-414) recombinant protein 10ng

Lane 3: His-tagged human IDH1 mutated R132G (aa1-414) recombinant protein 10ng

Lane 4: His-tagged human IDH1 mutated R132L (aa1-414) recombinant protein 10ng

Lane 5: His-tagged human IDH1 mutated R132S (aa1-414) recombinant protein 10ng

Lane 6: His-tagged human IDH1 mutated R132V (aa1-414) recombinant protein 10ng

Lane 7: His-tagged human IDH1 mutated R132C (aa1-414)

recombinant protein 10ng

Lane 8: His-tagged human IDH2 (aa40-452) recombinant protein 10ng

Lane 9: His-tagged human IDH2 mutated R172M (aa40-452) recombinant protein 10ng

Lane 10: His-tagged human IDH2 mutated R172S (aa40-452) recombinant protein 10ng

Lane 11: His-tagged human IDH2 mutated R172G (aa40-452) recombinant protein 10ng

Lane 12: His-tagged human IDH2 mutated R172W (aa40-452) recombinant protein 10ng

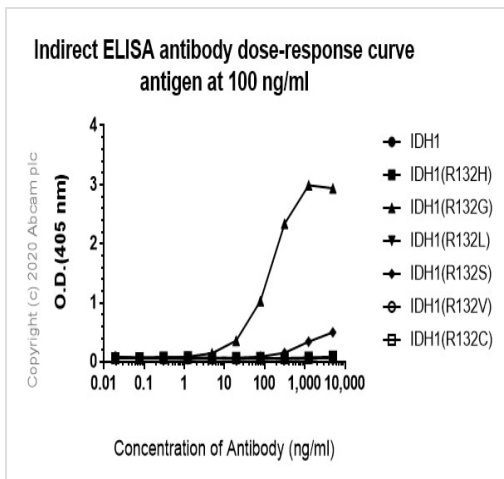
Lane 13: His-tagged human IDH2 mutated R172K (aa40-452) recombinant protein 10ng

Lane 14: His-tagged human IDH2 mutated R140Q (aa40-452) recombinant protein 10ng

ELISA - Anti-IDH1 (mutated R132 G) antibody [GMab-r1] (ab264050).

ab264050 used at 0-5000 ng/ml, followed by an Alkaline Phosphatase-conjugated AffiniPure Goat Anti-Mouse IgG (H+L) secondary used at 1/1000 dilution.

Antigen concentration 100 ng/ml.



Indirect ELISA - Anti-IDH1 (mutated R132G)
antibody [GMab-r1] (ab264050)

Why choose a recombinant antibody?



Research with confidence
Consistent and reproducible results



Long-term and scalable supply
Recombinant technology



Success from the first experiment
Confirmed specificity



Ethical standards compliant
Animal-free production

Anti-IDH1 (mutated R132G) antibody [GMab-r1]
(ab264050)

Please note: All products are "FOR RESEARCH USE ONLY. NOT FOR USE IN DIAGNOSTIC PROCEDURES"

Our Abpromise to you: Quality guaranteed and expert technical support

- Replacement or refund for products not performing as stated on the datasheet
- Valid for 12 months from date of delivery
- Response to your inquiry within 24 hours
- We provide support in Chinese, English, French, German, Japanese and Spanish
- Extensive multi-media technical resources to help you
- We investigate all quality concerns to ensure our products perform to the highest standards

If the product does not perform as described on this datasheet, we will offer a refund or replacement. For full details of the Abpromise, please visit <https://www.abcam.co.jp/abpromise> or contact our technical team.

Terms and conditions

- Guarantee only valid for products bought direct from Abcam or one of our authorized distributors