

### Anti-Iba1 antibody ab107159

★★★★★ **20 Abreviews** **137 References** 画像数 4

#### 製品の概要

製品名	Anti-Iba1 antibody
製品の詳細	Goat polyclonal to Iba1
由来種	Goat
特異性	If looking for a monoclonal anti-Iba1 alternative we can recommend our RabMAb <a href="#">ab178846</a> . This has the same immunogen as <a href="#">ab5076</a> . In recent testing in IHC-P this antibody only worked in Rat tissue, therefore we have removed Human and mouse as a "does not react with" species. However, feedback from our customers and publications suggest that this antibody recognizes human and mouse. Nevertheless, we cannot guarantee this antibody in these species.
アプリケーション	<b>適用あり:</b> IHC-P
種交差性	<b>交差種:</b> Rat <b>交差が予測される動物種:</b> Dog, Pig, Macaque monkey, Chinese hamster, Common marmoset
免疫原	Synthetic peptide corresponding to Rat Iba1 aa 100 to the C-terminus (C terminal) conjugated to keyhole limpet haemocyanin. (Peptide available as <a href="#">ab107655</a> )

#### 特記事項

The Life Science industry has been in the grips of a reproducibility crisis for a number of years. Abcam is leading the way in addressing this with our range of recombinant monoclonal antibodies and knockout edited cell lines for gold-standard validation. Please check that this product meets your needs before purchasing.

If you have any questions, special requirements or concerns, please send us an inquiry and/or contact our Support team ahead of purchase. Recommended alternatives for this product can be found below, along with publications, customer reviews and Q&As

#### 製品の特性

製品の状態	Liquid
保存方法	Shipped at 4°C. Store at +4°C short term (1-2 weeks). Upon delivery aliquot. Store at -20°C or -80°C. Avoid freeze / thaw cycle.
バッファー	pH: 7.40 Preservative: 0.02% Sodium azide Constituents: PBS, 3% BSA

	This product may contain up to 3% BSA depending on the batch. For specific batch formulations please contact us.
精製度	Immunogen affinity purified
ポリ/モノ	ポリクローナル
アイソタイプ	IgG

## アプリケーション

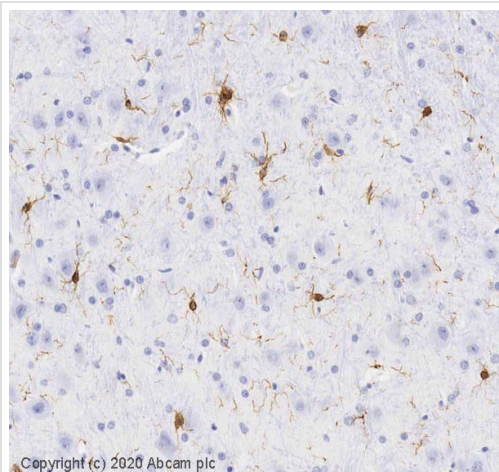
**The Abpromise guarantee**      Abpromise保証は、 次のテスト済みアプリケーションにおけるab107159の使用に適用されます  
アプリケーションノートには、推奨の開始希釈率がありますが、適切な希釈率につきましてはご検討ください。

アプリケーション	Abreviews	特記事項
IHC-P	★★★★★ (10)	Use at an assay dependent concentration.

## ターゲット情報

機能	Actin-binding protein that enhances membrane ruffling and RAC activation. Enhances the actin-bundling activity of LCP1. Binds calcium. Plays a role in RAC signaling and in phagocytosis. May play a role in macrophage activation and function. Promotes the proliferation of vascular smooth muscle cells and of T-lymphocytes. Enhances lymphocyte migration. Plays a role in vascular inflammation.
組織特異性	Detected in T-lymphocytes and peripheral blood mononuclear cells.
配列類似性	Contains 2 EF-hand domains.
翻訳後修飾	Phosphorylated on serine residues.
細胞内局在	Cytoplasm > cytoskeleton. Cell projection > ruffle membrane. Associated with the actin cytoskeleton at membrane ruffles and at sites of phagocytosis.

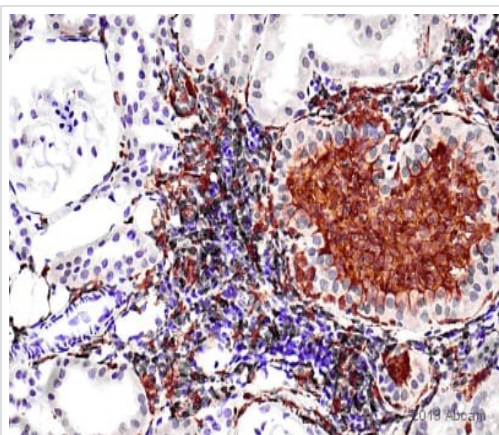
## 画像



Immunohistochemistry (Formalin/PFA-fixed paraffin-embedded sections) - Anti-Iba1 antibody (ab107159)

IHC image of Iba1 staining in a section of formalin-fixed paraffin-embedded normal rat brain performed on a Leica BOND™ system using the standard protocol **F**. The section was pre-treated using heat mediated antigen retrieval with sodium citrate buffer (pH6, epitope retrieval solution 1) for 20mins. The section was then incubated with ab107159, 5ug/ml, for 15 mins at room temperature. An HRP-conjugated donkey anti-goat IgG secondary was used for 15 mins at room temperature. DAB was used as the chromogen. The section was then counterstained with haematoxylin and mounted with DPX.

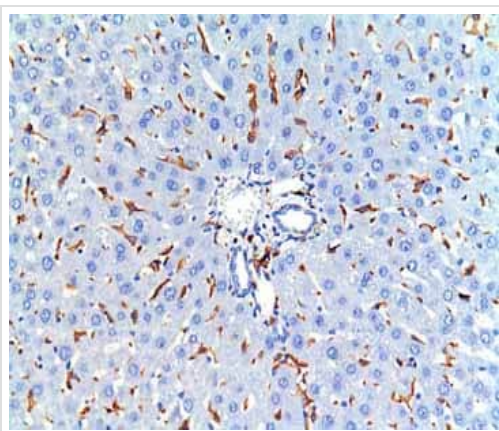
For other IHC staining systems (automated and non-automated) customers should optimize variable parameters such as antigen retrieval conditions, primary antibody concentration and antibody incubation times.



Immunohistochemistry (Formalin/PFA-fixed paraffin-embedded sections) - Anti-Iba1 antibody (ab107159)

This image is courtesy of an abreview submitted by Carl Hobbs, King's College London, United Kingdom

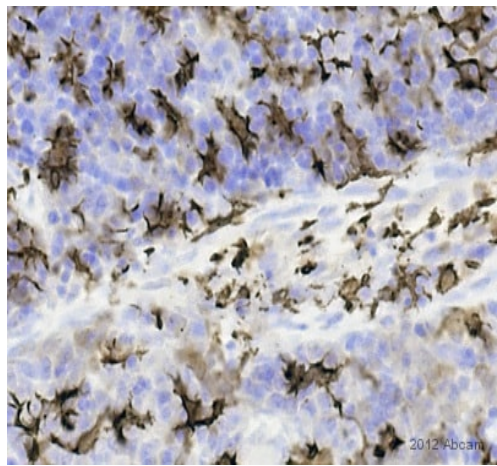
IHC-P image of Iba1 staining on marmoset (common) kidney sections using ab107159 (1:5000). The image shows macrophage infiltration in the cortex. The paraffin embedded sections were subjected to heat mediated antigen retrieval using citric acid. The sections were then blocked using 1% BSA at 21°C for 10 min. The primary antibody was incubated at 21°C for 16 hours. The secondary antibody was rabbit polyclonal to sheep IgG conjugated to biotin at 1:200.



Immunohistochemistry (Formalin/PFA-fixed paraffin-embedded sections) - Anti-Iba1 antibody (ab107159)

This image is courtesy of an anonymous Abreview

ab107159 staining Iba1 in Rat liver tissue sections by Immunohistochemistry (IHC-P - paraformaldehyde-fixed, paraffin-embedded sections). Tissue was fixed with formaldehyde and blocked with 1% BSA for 15 minutes at 20°C; antigen retrieval was by heat mediation in a citrate buffer. Samples were incubated with primary antibody (1/2000 in PBS + 1% BSA) for 1 hour at 20°C. An undiluted HRP-conjugated anti-goat IgG polyclonal was used as the secondary antibody. Kupffer cells are positive for Iba-1.



Immunohistochemistry (Formalin/PFA-fixed paraffin-embedded sections) - Anti-Iba1 antibody (ab107159)

This image is courtesy of an abreview submitted by Carl Hobbs, King's College London, United Kingdom

IHC-P image of Iba1 staining on rat spleen sections using ab107159 (1:2000). The paraffin embedded sections were subjected to heat mediated antigen retrieval using citric acid. The sections were then blocked using 1% BSA at 21°C for 10 min. The primary antibody was incubated at 21°C for 2 hours. The secondary antibody was goat polyclonal to anti-sheep conjugated to biotin at 1:250.

**Please note:** All products are "FOR RESEARCH USE ONLY. NOT FOR USE IN DIAGNOSTIC PROCEDURES"

### Our Abpromise to you: Quality guaranteed and expert technical support

---

- Replacement or refund for products not performing as stated on the datasheet
- Valid for 12 months from date of delivery
- Response to your inquiry within 24 hours
- We provide support in Chinese, English, French, German, Japanese and Spanish
- Extensive multi-media technical resources to help you
- We investigate all quality concerns to ensure our products perform to the highest standards

If the product does not perform as described on this datasheet, we will offer a refund or replacement. For full details of the Abpromise, please visit <https://www.abcam.co.jp/abpromise> or contact our technical team.

### Terms and conditions

---

- Guarantee only valid for products bought direct from Abcam or one of our authorized distributors