

### Anti-Human Kappa Light Chain antibody [RM126] ab195576

リコンビナント

画像数 3

#### 製品の概要

製品名	Anti-Human Kappa Light Chain antibody [RM126]
製品の詳細	Rabbit monoclonal [RM126] to Human Kappa Light Chain
由来種	Rabbit
特異性	ab195576 reacts to the kappa light chain of human immunoglobulins. No cross reactivity with the lambda light chain, mouse IgG, rat IgG, or goat IgG.
アプリケーション	<b>適用あり:</b> IHC-P, ELISA
種交差性	<b>交差種:</b> Human
免疫原	Full length native protein (purified) corresponding to Human Human Kappa Light Chain. Human IgG purified from Human plasma.
ポジティブ・コントロール	Human tonsil tissue.

#### 製品の特性

製品の状態	Liquid
保存方法	Shipped at 4°C. Store at +4°C short term (1-2 weeks). Upon delivery aliquot. Store at -20°C long term. Avoid freeze / thaw cycle.
バッファー	Preservative: 0.09% Sodium azide Constituents: 1% BSA, 48% PBS, 50% Glycerol (glycerin, glycerine)
精製度	Protein A purified
特記事項(精製)	ab195576 was purified from an animal origin-free culture supernatant.
ポリ/モノ	モノクローナル
クローン名	RM126
アイソタイプ	IgG

#### アプリケーション

**The Abpromise guarantee** **Abpromise保証は、** 次のテスト済みアプリケーションにおけるab195576の使用に適用されます  
アプリケーションノートには、推奨の開始希釈率がありますが、適切な希釈率につきましてはご検討ください。

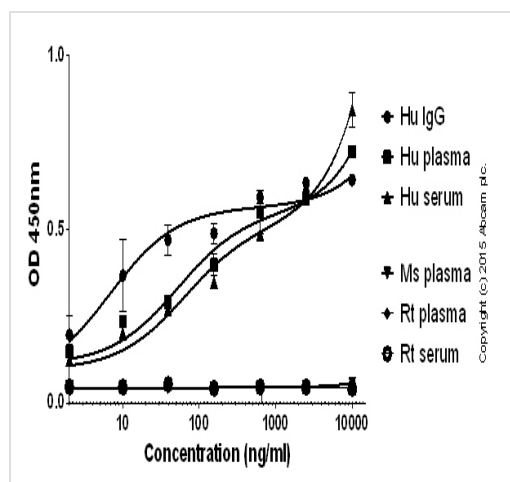
アプリケーション	Abreviews	特記事項
IHC-P		Use a concentration of 0.5 - 2 µg/ml.
ELISA		Use a concentration of 0.05 - 0.2 µg/ml.

## ターゲット情報

細胞内局在

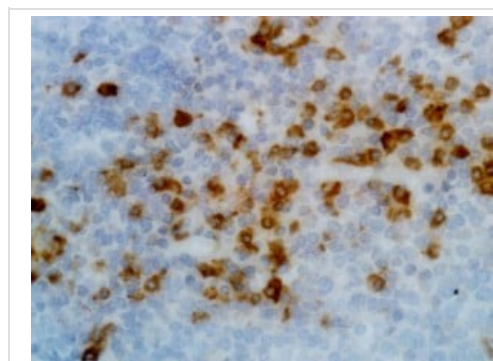
Secreted

## 画像



ELISA - Anti-Human Kappa Light Chain antibody [RM126] (ab195576)

The wells were coated with ab195576 at 0.5µg/ml at 50µl/well overnight at 4°C, followed by a 5% BSA blocking step for 2h RT. Human IgG ([ab98981](#)) was then added starting at 10 µg/ml and plasma/serum at 1:10 and gradually diluted 1:4, 50µl/well for 2h. [Ab201484](#) was then added at 1:10,000 dilution, 50µl/well for 2h. A HRP-streptavidin ([ab7403](#)) was used at 1:10,000 dilution for 1h.



Immunohistochemical analysis of Human tonsil tissue labeling Human IgG Kappa Light Chain with ab195576 at 2 µg/ml.

Immunohistochemistry (Formalin/PFA-fixed paraffin-embedded sections) - Anti-Human Kappa Light Chain antibody [RM126] (ab195576)

Why choose a recombinant antibody?

 <b>Research with confidence</b> Consistent and reproducible results	 <b>Long-term and scalable supply</b> Recombinant technology
 <b>Success from the first experiment</b> Confirmed specificity	 <b>Ethical standards compliant</b> Animal-free production

Anti-Human Kappa Light Chain antibody [RM126]  
(ab195576)

**Please note:** All products are "FOR RESEARCH USE ONLY. NOT FOR USE IN DIAGNOSTIC PROCEDURES"

### Our Abpromise to you: Quality guaranteed and expert technical support

---

- Replacement or refund for products not performing as stated on the datasheet
- Valid for 12 months from date of delivery
- Response to your inquiry within 24 hours
- We provide support in Chinese, English, French, German, Japanese and Spanish
- Extensive multi-media technical resources to help you
- We investigate all quality concerns to ensure our products perform to the highest standards

If the product does not perform as described on this datasheet, we will offer a refund or replacement. For full details of the Abpromise, please visit <https://www.abcam.co.jp/abpromise> or contact our technical team.

### Terms and conditions

---

- Guarantee only valid for products bought direct from Abcam or one of our authorized distributors