

Anti-Human IgM antibody [RM121] ab193159

リコンビナント

画像数 5

製品の概要

製品名	Anti-Human IgM antibody [RM121]
製品の詳細	Rabbit monoclonal [RM121] to Human IgM
由来種	Rabbit
アプリケーション	適用あり: Sandwich ELISA, ELISA
種交差性	交差種: Human, Recombinant fragment
免疫原	Full length protein corresponding to Human IgM. Human IgM Database link: P01871

製品の特性

製品の状態	Liquid
保存方法	Shipped at 4°C. Store at +4°C short term (1-2 weeks). Upon delivery aliquot. Store at -20°C long term. Avoid freeze / thaw cycle.
バッファー	Preservative: 0.09% Sodium azide Constituents: 1% BSA, 48% PBS, 50% Glycerol (glycerin, glycerine)
精製度	Protein A purified
特記事項(精製)	Protein A affinity purified from an animal origin-free culture supernatant.
ポリ/モノ	モノクローナル
クローン名	RM121
アイソタイプ	IgG

アプリケーション

The Abpromise guarantee **Abpromise保証は、次のテスト済みアプリケーションにおけるab193159の使用に適用されず**
アプリケーションノートには、推奨の開始希釈率がありますが、適切な希釈率につきましてはご検討ください。

アプリケーション	Abreviews	特記事項

アプリケーション	Abreviews	特記事項
Sandwich ELISA		Use at an assay dependent concentration. Use: 50ng/well – 200ng/well (for Capture); 0.05µg/mL – 0.2µg/mL (for Detection);
ELISA		Use at an assay dependent concentration.

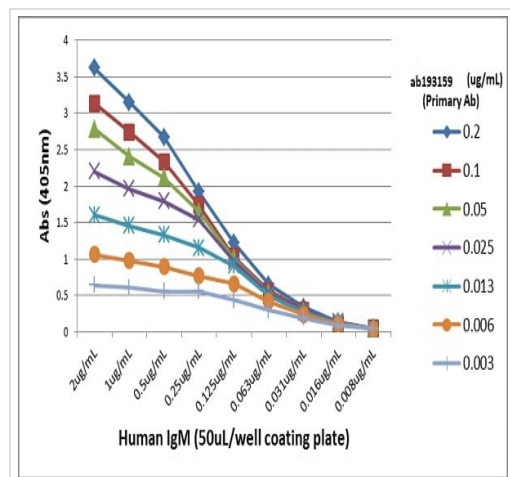
ターゲット情報

関連性

IgM normally constitutes about 10% of serum immunoglobulins. IgM antibody is prominent in early immune responses to most antigens and is largely confined to plasma due to its large size. Monomeric IgM is expressed as a membrane bound antibody on the surface of B cells and as a pentamer when secreted by plasma cells. Due to its high valency IgM is more efficient than other isotypes in binding antigens with repeating epitopes (virus particles and red blood cells) and is more efficient than IgG in activating the complement pathway. The gene for the mu constant region contains four domains separated by short intervening sequences. IgM measurement yields information about the body's immediate resistance and response to infection as well as information related to specific diseases. Decreased levels are associated with immune deficiency states, hereditary deficiencies, and myeloma. Increased levels can be associated with Waldenstrom's macroglobulinemia, chronic infection and hepatocellular disease.

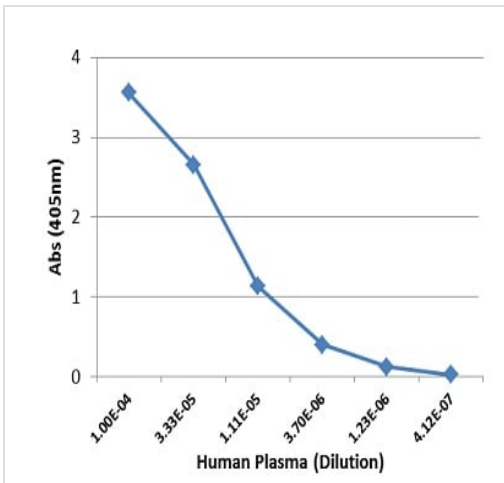
細胞内局在 Cell Membrane and Secreted

画像



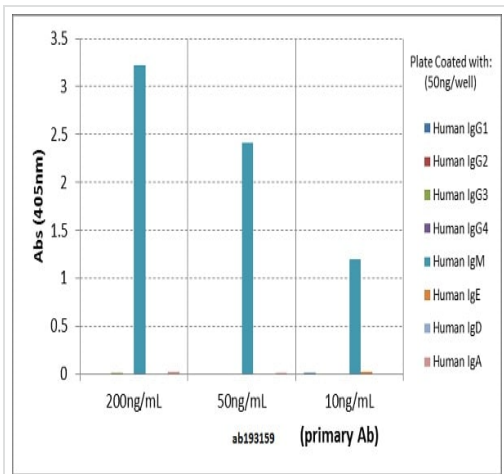
A titer ELISA using ab193159. The plate was coated with different amounts of human IgM. A serial dilution of ab193159 was used as the primary antibody. An alkaline phosphatase conjugated anti-rabbit IgG as the secondary antibody.

ELISA - Anti-Human IgM antibody [RM121]
(ab193159)



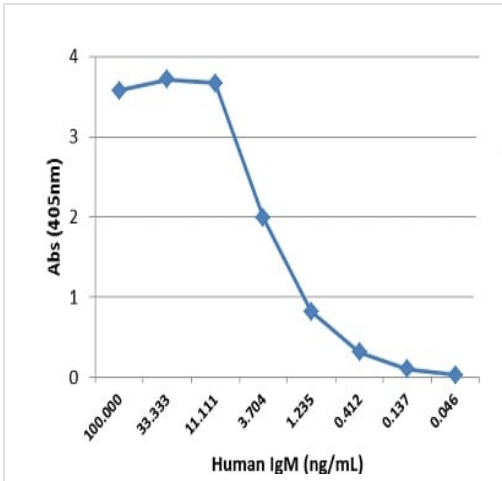
Sandwich ELISA - Anti-Human IgM antibody [RM121] (ab193159)

Sandwich ELISA using ab193159 as the capture antibody (100ng/well), and a biotinylated anti-human light chains ($\kappa + \lambda$) antibody as the detection antibody, followed by an alkaline phosphatase conjugated streptavidin.



ELISA - Anti-Human IgM antibody [RM121] (ab193159)




ELISA of human immunoglobulins shows ab193159 only reacted to human IgM. No cross reactivity with Human IgG, IgE, IgD, or IgA. The plate was coated with 50 ng/well of different immunoglobulins. 200 ng/mL, 50 ng/mL of ab193159 was used as the primary antibody. An alkaline phosphatase conjugated anti-rabbit IgG as the secondary antibody.



Sandwich ELISA using ab193159 as the capture antibody (100ng/well), and a biotinylated anti-human light chains ($\kappa + \lambda$) antibody as the detection antibody, followed by an alkaline phosphatase conjugated streptavidin.

Sandwich ELISA - Anti-Human IgM antibody
[RM121] (ab193159)

Why choose a recombinant antibody?

 <p>Research with confidence Consistent and reproducible results</p>	 <p>Long-term and scalable supply Recombinant technology</p>
 <p>Success from the first experiment Confirmed specificity</p>	 <p>Ethical standards compliant Animal-free production</p>

Anti-Human IgM antibody [RM121] (ab193159)

Please note: All products are "FOR RESEARCH USE ONLY. NOT FOR USE IN DIAGNOSTIC PROCEDURES"

Our Abpromise to you: Quality guaranteed and expert technical support

- Replacement or refund for products not performing as stated on the datasheet
- Valid for 12 months from date of delivery
- Response to your inquiry within 24 hours
- We provide support in Chinese, English, French, German, Japanese and Spanish
- Extensive multi-media technical resources to help you
- We investigate all quality concerns to ensure our products perform to the highest standards

If the product does not perform as described on this datasheet, we will offer a refund or replacement. For full details of the Abpromise, please visit <https://www.abcam.co.jp/abpromise> or contact our technical team.

Terms and conditions

- Guarantee only valid for products bought direct from Abcam or one of our authorized distributors