

Anti-HSV1 + HSV2 gD antibody [2C10] ab6507

23 References [画像数 2](#)

製品の概要

製品名	Anti-HSV1 + HSV2 gD antibody [2C10]
製品の詳細	Mouse monoclonal [2C10] to HSV1 + HSV2 gD
由来種	Mouse
アプリケーション	適用あり: WB, ELISA, ICC/IF
種交差性	交差種: Herpes simplex virus, Human herpesvirus 2
免疫原	Tissue, cells or virus corresponding to HSV1 + HSV2 gD.
特記事項	<p>The Life Science industry has been in the grips of a reproducibility crisis for a number of years. Abcam is leading the way in addressing this with our range of recombinant monoclonal antibodies and knockout edited cell lines for gold-standard validation. Please check that this product meets your needs before purchasing.</p> <p>If you have any questions, special requirements or concerns, please send us an inquiry and/or contact our Support team ahead of purchase. Recommended alternatives for this product can be found below, along with publications, customer reviews and Q&As</p>

製品の特性

製品の状態	Liquid
保存方法	Shipped at 4°C. Upon delivery aliquot and store at -20°C or -80°C. Avoid repeated freeze / thaw cycles.
バッファー	pH: 7.40 Constituent: 100% PBS
精製度	Protein A purified
ポリ/モノ	モノクローナル
クローン名	2C10
ミエローマ	NS1/1-Ag4-1
アイソタイプ	IgG2a
軽鎖の種類	kappa

アプリケーション

The Abpromise guarantee

Abpromise保証は、次のテスト済みアプリケーションにおけるab6507の使用に適用されます

アプリケーションノートには、推奨の開始希釈率がありますが、適切な希釈率につきましてはご検討ください。

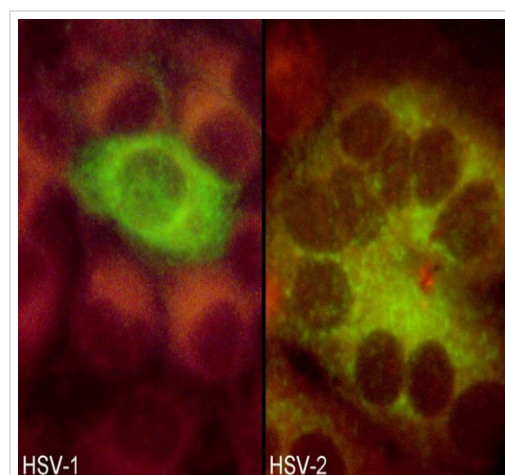
アプリケーション	Abreviews	特記事項
WB		1/10000.
ELISA		1/102400.
ICC/IF		1/3200 - 1/25600. 1/3,200 (HSV-2) - 1/25,600 (HSV-1).

ターゲット情報

関連性

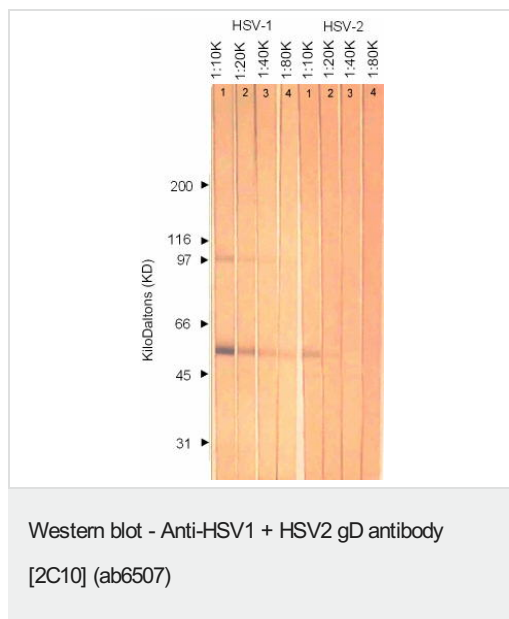
Herpes simplex virus 1 and 2 (HSV-1 and HSV-2) are two species of the herpes virus family, Herpesviridae, which cause infections in humans. They are also called Human Herpes Virus 1 and 2 (HHV-1 and HHV-2) and are neurotropic and neuroinvasive viruses; they enter and hide in the human nervous system, accounting for their durability in the human body. Under a microscope, HSV- 1 and 2 are virtually identical, sharing approximately 50% of their DNA. Both types infect the body's mucosal surfaces, usually the mouth or genitals, and then establish latency in the nervous system. HSV-1 is commonly associated with herpes outbreaks of the face known as cold sores or fever blisters, whereas HSV-2 is more often associated with genital herpes. Herpes simplex viruses (HSV) use multiple and sequential receptors to enter host cells. HSV glycoprotein D (gD) has been implicated in binding to cellular receptors that facilitate virus penetration into cells. Herpes simplex virus type 1 (HSV-1) glycoprotein D (gD) is an essential component of the entry apparatus that is responsible for viral penetration and subsequent cell-cell spread.

画像



Immunocytochemistry/Immunofluorescence analysis of vero cells infected with HSV1 (left) or HSV2 (right) labelled with ab6507.

Immunocytochemistry/ Immunofluorescence - Anti-HSV1 + HSV2 gD antibody [2C10] (ab6507)



The WB was completed using the HSV-1 Antigen and the HSV-2 Infected Cell Extract at 10 µg/cm

Please note: All products are "FOR RESEARCH USE ONLY. NOT FOR USE IN DIAGNOSTIC PROCEDURES"

Our Abpromise to you: Quality guaranteed and expert technical support

- Replacement or refund for products not performing as stated on the datasheet
- Valid for 12 months from date of delivery
- Response to your inquiry within 24 hours
- We provide support in Chinese, English, French, German, Japanese and Spanish
- Extensive multi-media technical resources to help you
- We investigate all quality concerns to ensure our products perform to the highest standards

If the product does not perform as described on this datasheet, we will offer a refund or replacement. For full details of the Abpromise, please visit <https://www.abcam.co.jp/abpromise> or contact our technical team.

Terms and conditions

- Guarantee only valid for products bought direct from Abcam or one of our authorized distributors