

# Anti-HSV 1 ICP4 Immediate Early Protein antibody [10F1] ab6514

★★★★★ [5 Abreviews](#) [55 References](#) [画像数 3](#)

### 製品の概要

---

製品名	Anti-HSV 1 ICP4 Immediate Early Protein antibody [10F1]
製品の詳細	Mouse monoclonal [10F1] to HSV 1 ICP4 Immediate Early Protein
由来種	Mouse
特異性	ELISA titer 1/25,600 absorption of 0.10
アプリケーション	<b>適用あり:</b> WB, ELISA, ICC/IF
種交差性	<b>交差種:</b> Herpes simplex virus
免疫原	Tissue, cells or virus corresponding to HSV 1 ICP4 Immediate Early Protein.
特記事項	<p>The Life Science industry has been in the grips of a reproducibility crisis for a number of years. Abcam is leading the way in addressing this with our range of recombinant monoclonal antibodies and knockout edited cell lines for gold-standard validation. Please check that this product meets your needs before purchasing.</p> <p>If you have any questions, special requirements or concerns, please send us an inquiry and/or contact our Support team ahead of purchase. Recommended alternatives for this product can be found below, along with publications, customer reviews and Q&amp;As</p>

### 製品の特性

---

製品の状態	Liquid
保存方法	Shipped at 4°C. Upon delivery aliquot and store at -20°C or -80°C. Avoid repeated freeze / thaw cycles.
バッファー	pH: 7.4
精製度	Protein A purified
ポリ/モノ	モノクローナル
クローン名	10F1
ミエローマ	NS1/1-Ag4-1
アイソタイプ	IgG1
軽鎖の種類	kappa

## アプリケーション

**The Abpromise guarantee** **Abpromise保証は、次のテスト済みアプリケーションにおけるab6514の使用に適用されます**  
アプリケーションノートには、推奨の開始希釈率がありますが、適切な希釈率につきましてはご検討ください。

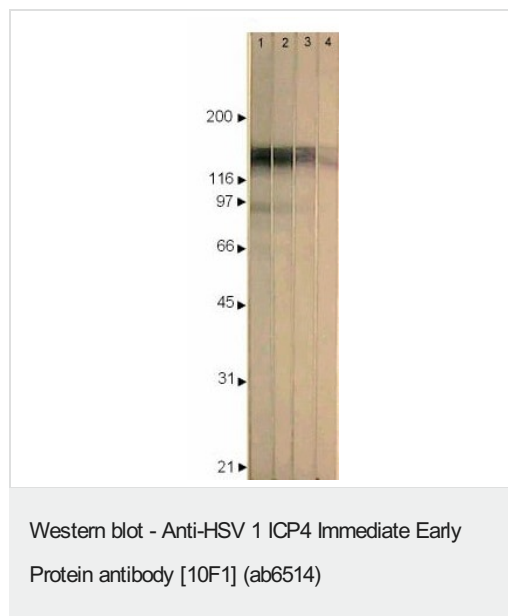
アプリケーション	Abreviews	特記事項
WB	★★★★★ (3)	1/800.
ELISA		1/25600.
ICC/IF	★★★★★ (2)	1/25600.

## ターゲット情報

**関連性** This IE protein is a multifunctional protein capable of migrating to the nucleus, binding to DNA, trans-activating other viral genes, and autoregulating its own synthesis. Binding of ICP4 to alpha genes causes repression of their expression. ICP4 also acts as a transcriptional activator of beta and gamma genes.

**細胞内局在** Nuclear

## 画像



**Lane 1 :** Anti-HSV 1 ICP4 Immediate Early Protein antibody [10F1] (ab6514) at 1/200 dilution

**Lane 2 :** Anti-HSV 1 ICP4 Immediate Early Protein antibody [10F1] (ab6514) at 1/400 dilution

**Lane 3 :** Anti-HSV 1 ICP4 Immediate Early Protein antibody [10F1] (ab6514) at 1/800 dilution

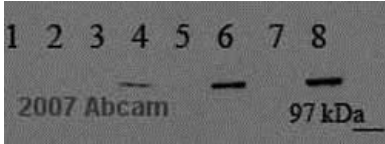
**Lane 4 :** Anti-HSV 1 ICP4 Immediate Early Protein antibody [10F1] (ab6514) at 1/1600 dilution

**All lanes :** BCIP/NBT. HSV-1 MacIntyre/Vero infected cell extract

Lysates/proteins at 10 µg per lane.

### Secondary

**All lanes :** Anti-Mouse secondary at 1/5000 dilution



Western blot - Anti-HSV 1 ICP4 Immediate Early Protein antibody [10F1] (ab6514)

This image is courtesy of an anonymous Abreview

**All lanes :** Anti-HSV 1 ICP4 Immediate Early Protein antibody [10F1] (ab6514) at 1/1000 dilution

**Lane 1 :** HeLa cells (whole cell lysate) - mock infection, cytosolic fraction

**Lane 2 :** HeLa cells (whole cell lysate) - mock infection, membrane fraction

**Lane 3 :** HeLa cells (whole cell lysate) - mock infection, nuclear fraction

**Lane 4 :** HeLa cells (whole cell lysate) Infected with HSV KOS for 16 hours - cytosolic fraction

**Lane 5 :** HeLa cells (whole cell lysate) Infected with HSV KOS for 16 hours -membrane fraction

**Lane 6 :** HeLa cells (whole cell lysate) Infected with HSV KOS for 16 hours - nuclear fraction

**Lane 7 :** HeLa cells (whole cell lysate) - mock infected

**Lane 8 :** HeLa cells (whole cell lysate) Infected with HSV KOS for 16 hours

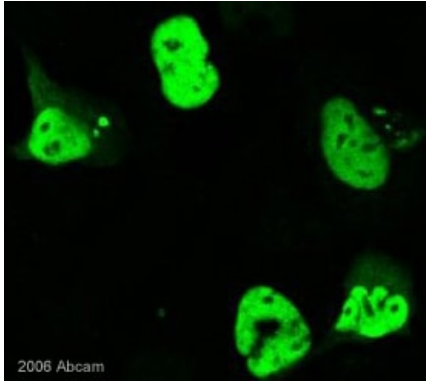
Lysates/proteins at 10 µg per lane.

### Secondary

**All lanes :** HRP conjugated sheep anti-mouse IgG

**Observed band size:** 97 kDa

As shown, ICP4 is detected mainly in the nuclear fraction of infected cells (lane 6). The presence of ICP4 in the cytosolic fraction (lane 4) probably represents the protein undergoing synthesis.



ab6514 (1/5000) staining HSV1 ICP4 immediate Early Protein in 293T cells transiently transfected with a plasmid expressing HSV ICP4 (green). Cells were formaldehyde-fixed and incubated with the primary antibody for 1 hour. A FITC conjugated rabbit polyclonal antibody was used as the secondary antibody.

Immunocytochemistry/ Immunofluorescence - Anti-HSV 1 ICP4 Immediate Early Protein antibody [10F1] (ab6514)

This image is courtesy of an anonymous Abreview

**Please note:** All products are "FOR RESEARCH USE ONLY. NOT FOR USE IN DIAGNOSTIC PROCEDURES"

### **Our Abpromise to you: Quality guaranteed and expert technical support**

---

- Replacement or refund for products not performing as stated on the datasheet
- Valid for 12 months from date of delivery
- Response to your inquiry within 24 hours
- We provide support in Chinese, English, French, German, Japanese and Spanish
- Extensive multi-media technical resources to help you
- We investigate all quality concerns to ensure our products perform to the highest standards

If the product does not perform as described on this datasheet, we will offer a refund or replacement. For full details of the Abpromise, please visit <https://www.abcam.co.jp/abpromise> or contact our technical team.

### **Terms and conditions**

---

- Guarantee only valid for products bought direct from Abcam or one of our authorized distributors