

Anti-HSPC150/UBE2T antibody [EPR9446] ab140611

リコンビナント RabMAb

★★★★☆ **1 Abreviews** **2 References** [画像数 2](#)

製品の概要

製品名	Anti-HSPC150/UBE2T antibody [EPR9446]
製品の詳細	Rabbit monoclonal [EPR9446] to HSPC150/UBE2T
由来種	Rabbit
アプリケーション	適用あり: WB 適用なし: Flow Cyt, ICC/IF, IHC-P or IP
種交差性	交差種: Human
免疫原	Synthetic peptide within Human HSPC150/UBE2T aa 1-100. The exact sequence is proprietary.
ポジティブ・コントロール	HeLa and Jurkat cell lysates
特記事項	<p>This product is a recombinant monoclonal antibody, which offers several advantages including:</p> <ul style="list-style-type: none">- High batch-to-batch consistency and reproducibility- Improved sensitivity and specificity- Long-term security of supply- Animal-free production <p>For more information see here.</p> <p>Our RabMAb[®] technology is a patented hybridoma-based technology for making rabbit monoclonal antibodies. For details on our patents, please refer to RabMAb[®] patents.</p> <p>Mouse, Rat: We have preliminary internal testing data to indicate this antibody may not react with these species. Please contact us for more information.</p>

製品の特性

製品の状態	Liquid
保存方法	Shipped at 4°C. Store at -20°C.
バッファー	pH: 7.2 Preservative: 0.01% Sodium azide Constituents: 9% PBS, 40% Glycerol (glycerin, glycerine), 0.05% BSA, 50% Tissue culture supernatant
精製度	Tissue culture supernatant
ポリ/モノ	モノクローナル

クローン名 EPR9446
アイソタイプ IgG

アプリケーション

The Abpromise guarantee **Abpromise保証は、** 次のテスト済みアプリケーションにおけるab140611の使用に適用されます
アプリケーションノートには、推奨の開始希釈率がありますが、適切な希釈率につきましてはご検討ください。

アプリケーション	Abreviews	特記事項
WB	★★★★☆ (1)	1/1000 - 1/10000. Detects a band of approximately 23 kDa (predicted molecular weight: 23 kDa).

追加情報 Is unsuitable for Flow Cyt, ICC/IF, IHC-P or IP.

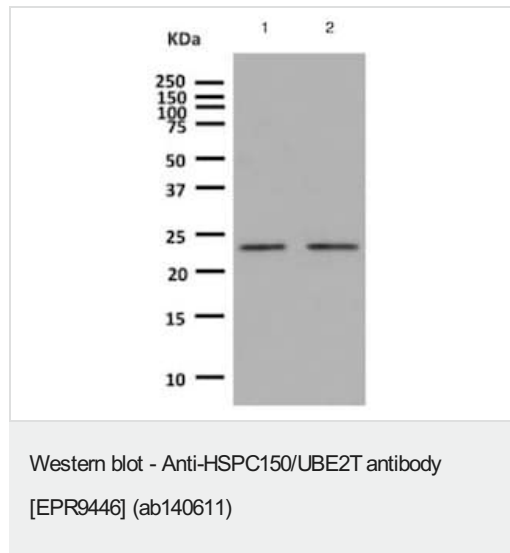
ターゲット情報

機能 Accepts ubiquitin from the E1 complex and catalyzes its covalent attachment to other proteins. In vitro able to catalyze polyubiquitination using all 7 ubiquitin Lys residues, but may prefer 'Lys-11', 'Lys-27', 'Lys-48' and 'Lys-63'-linked polyubiquitination.

パスウェイ Protein modification; protein ubiquitination.

配列類似性 Belongs to the ubiquitin-conjugating enzyme family.

画像



All lanes : Anti-HSPC150/UBE2T antibody [EPR9446] (ab140611) at 1/1000 dilution

Lane 1 : HeLa cell lysate

Lane 2 : Jurkat cell lysate

Lysates/proteins at 10 µg per lane.

Secondary

All lanes : HRP labelled goat anti-rabbit IgG at 1/2000 dilution

Predicted band size: 23 kDa

Observed band size: 23 kDa

Why choose a recombinant antibody?

Research with confidence
Consistent and reproducible results

Long-term and scalable supply
Recombinant technology

Success from the first experiment
Confirmed specificity

Ethical standards compliant
Animal-free production

Anti-HSPC150/UBE2T antibody [EPR9446]
(ab140611)

Please note: All products are "FOR RESEARCH USE ONLY. NOT FOR USE IN DIAGNOSTIC PROCEDURES"

Our Abpromise to you: Quality guaranteed and expert technical support

- Replacement or refund for products not performing as stated on the datasheet
- Valid for 12 months from date of delivery
- Response to your inquiry within 24 hours
- We provide support in Chinese, English, French, German, Japanese and Spanish
- Extensive multi-media technical resources to help you
- We investigate all quality concerns to ensure our products perform to the highest standards

If the product does not perform as described on this datasheet, we will offer a refund or replacement. For full details of the Abpromise, please visit <https://www.abcam.co.jp/abpromise> or contact our technical team.

Terms and conditions

- Guarantee only valid for products bought direct from Abcam or one of our authorized distributors