



# Anti-Hsp90 alpha antibody ab2928

**33 References**   **画像数 9**

### 製品の概要

製品名	Anti-Hsp90 alpha antibody
製品の詳細	Rabbit polyclonal to Hsp90 alpha
由来種	Rabbit
特異性	Detects Heat Shock Protein 86 (HSP 86). This antibody does not detect HSP 84.
アプリケーション	<b>適用あり:</b> ICC/IF, WB, IP, IHC-P
種交差性	<b>交差種:</b> Mouse, Rat, Human, African green monkey
免疫原	Synthetic peptide corresponding to Mouse Hsp90 alpha aa 2-12 (N terminal). Sequence: PEETQTQDQPM
	 <a href="#">Run BLAST with</a>  <a href="#">Run BLAST with</a>
ポジティブ・コントロール	WB: HEK-293T, HeLa, K562, A431, HepG2, COS-7, NIH/3T3, NRK whole cell lysate. ICC/IF: HeLa, NIH/3T3, whole cell. IHC-P: Human colon adenocarcinoma, breast carcinoma, tonsil, kidney tissue. IP: HeLa whole cell lysate.
特記事項	<p>The Life Science industry has been in the grips of a reproducibility crisis for a number of years. Abcam is leading the way in addressing this with our range of recombinant monoclonal antibodies and knockout edited cell lines for gold-standard validation. Please check that this product meets your needs before purchasing.</p> <p>If you have any questions, special requirements or concerns, please send us an inquiry and/or contact our Support team ahead of purchase. Recommended alternatives for this product can be found below, along with publications, customer reviews and Q&amp;As</p>

### 製品の特性

製品の状態	Liquid
保存方法	Shipped at 4°C. Store at +4°C short term (1-2 weeks). Upon delivery aliquot. Store at -20°C or -80°C. Avoid freeze / thaw cycle.
バッファー	Preservative: 0.05% Sodium azide Constituents: 0.1% BSA, 99% PBS
精製度	Immunogen affinity purified
一次抗体 備考	Heat shock proteins (HSP) are expressed in response to various biological stresses, including heat. HSP 90 is a 90 kDa protein that is induced under stress conditions, but is also one of the

most abundant cellular proteins found under non-stress conditions. HSP 90 has been found to be associated with a number of other intracellular proteins, including steroid receptors, actin, tubulin, Ah receptor, and some kinases. Studies have shown that murine HSP 90 exists as two forms, HSP 84 and HSP 86, coded by related but separate genes, with 86% homologous amino acid sequences. These forms are analogous to the two forms of human HSP 90, HSP 89 beta and HSP 89 alpha. In an unstressed mouse fibroblast, the basal level of HSP 84 is found to be double that of HSP 86. However, after heat shock, HSP 86 shows a greater increase. Studies also suggest that upon cellular differentiation, the level of HSP 86, but not HSP 84, decreases. HSP 84 and HSP 86, which may be subject to estrogenic regulation, have been found as components of the non-DNA binding form of mouse glucocorticoid receptor, but dissociated from the transformed DNA-binding form.

ポリ/モノ  
アイソタイプ

ポリクローナル  
IgG

## アプリケーション

**The Abpromise guarantee**      **Abpromise保証は、** 次のテスト済みアプリケーションにおけるab2928の使用に適用されます  
アプリケーションノートには、推奨の開始希釈率がありますが、適切な希釈率につきましてはご検討ください。

アプリケーション	Abreviews	特記事項
ICC/IF		1/50 - 1/200.
WB		1/500 - 1/2000. Detects a band of approximately 86 kDa.
IP		Use at an assay dependent concentration. Use at 2 µg.  Immunoprecipitation experiments with this antibody suggest that HSP90 alpha exists primarily as homodimers in HeLa cells. This antibody is capable of precipitating HSP90 alpha that is complexed with other proteins such as the aryl hydrocarbon (Ah) receptor.
IHC-P		Use a concentration of 5 µg/ml.

## ターゲット情報

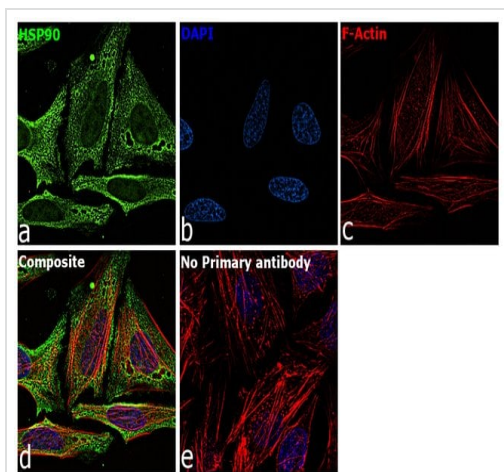
**機能**      Molecular chaperone. Has ATPase activity.

**配列類似性**      Belongs to the heat shock protein 90 family.

**翻訳後修飾**      ISGylated.

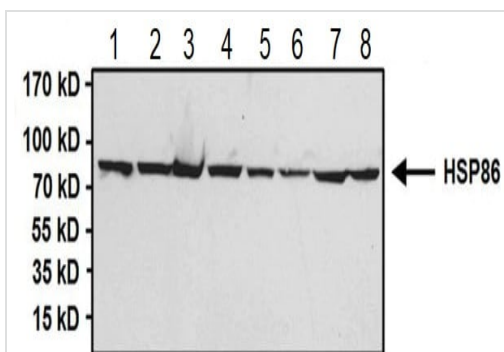
**細胞内局在**      Cytoplasm. Melanosome. Identified by mass spectrometry in melanosome fractions from stage I to stage IV.

## 画像



Immunocytochemistry/ Immunofluorescence - Anti-Hsp90 alpha antibody (ab2928)

Immunocytochemistry analysis of HeLa cells labeling HSP90 alpha with ab2928 at 5ug/mL in 0.1% BSA, incubated at 4°C overnight. Cells were 70% confluent log phase. The cells were fixed with 4% paraformaldehyde for 10 minutes, permeabilized with 0.1% Triton™ X-100 for 15 minutes, and blocked with 2% BSA for 45 minutes at room temperature. Cells were then labeled with Goat anti-Rabbit IgG (H+L) Highly Cross-Adsorbed Secondary Antibody, Alexa Fluor Plus 488 at 1/2000, for 45 minutes at room temperature (Panel a: Green). Nuclei (Panel b:Blue) were stained with ProLong™ Diamond Antifade Mountant with DAPI. F-actin (Panel c: Red) was stained with Rhodamine Phalloidin 1/300). Panel d represents the merged image showing cytoplasm and weak Nucleus localization. Panel e represents control cells with no primary antibody to assess background. The images were captured at 60X magnification.



Western blot - Anti-Hsp90 alpha antibody (ab2928)

**All lanes :** Anti-Hsp90 alpha antibody (ab2928) at 1/1000 dilution

**Lane 1 :** HEK-293T (Human epithelial cell line from embryonic kidney transformed with large T antigen) whole cell lysate

**Lane 2 :** HeLa (Human epithelial cell line from cervix adenocarcinoma) whole cell lysate

**Lane 3 :** K562 (Human chronic myelogenous leukemia cell line from bone marrow ) whole cell lysate

**Lane 4 :** A431 (Human epidermoid carcinoma cell line) whole cell lysate

**Lane 5 :** HepG2 (Human liver hepatocellular carcinoma cell line) whole cell lysate

**Lane 6 :** COS-7 (African green monkey kidney fibroblast-like cell line) whole cell lysate

**Lane 7 :** NIH/3T3 (Mouse embryo fibroblast cell line) whole cell lysate

**Lane 8 :** NRK (Rat kidney normal tissue) whole cell lysate

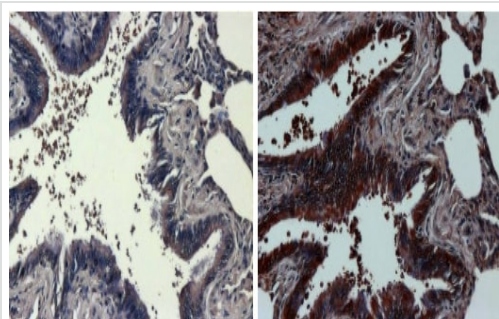
Lysates/proteins at 50 µg per lane.

### Secondary

**All lanes :** Goat anti-rabbit IgG HRP secondary antibody at 1/20000 dilution

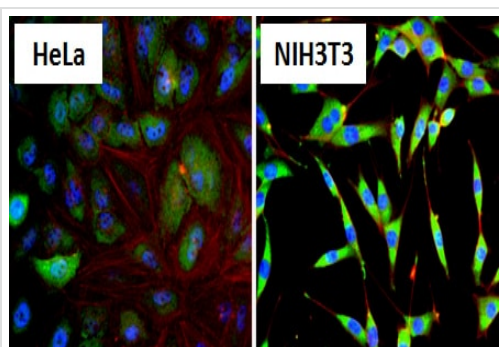
Western blot analysis of HSP90 alpha was performed by loading samples onto a 4-20% Tris-HCl polyacrylamide gel.

Proteins were transferred to a PVDF membrane and blocked with 5% BSA/TBST for at least 1 hour. The membrane was probed with ab2928 overnight at 4°C on a rocking platform, washed in TBS-0.1%Tween 20, and probed with a secondary antibody for at least 1 hour. Chemiluminescent detection was performed.



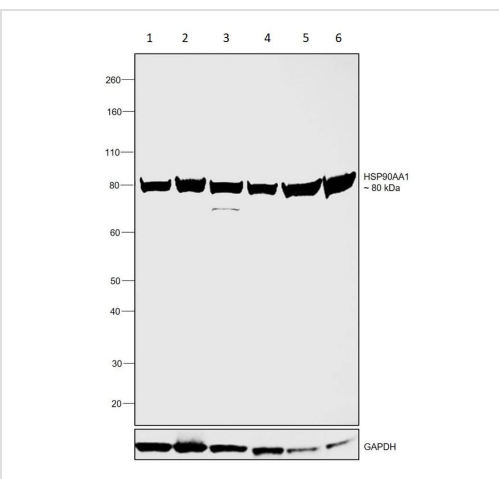
Immunohistochemistry (Formalin/PFA-fixed paraffin-embedded sections) - Anti-Hsp90 alpha antibody (ab2928)

ab2928 labelling Hsp90 alpha in Human colon adenocarcinoma tissue sections by Immunohistochemistry (formalin/PFA-fixed paraffin-embedded sections). To expose target proteins, heat-induced epitope retrieval was performed using 10mM sodium citrate (pH 6.0) buffer for 20 minutes at 95°C. Tissues were blocked in 3% BSA in PBST for 30 minutes at room temperature. Tissue sections were incubated with the primary antibody (1:100) for 1 hour. A HRP-conjugated goat anti-rabbit IgG (1:250) was used as the secondary antibody, followed by colorimetric detection using Metal Enhanced DAB Substrate Kit. Tissues were counterstained with hematoxylin and prepped for mounting. Images were taken at 40X magnification.



Immunocytochemistry/ Immunofluorescence - Anti-Hsp90 alpha antibody (ab2928)

Immunocytochemistry/Immunofluorescence analysis of HSP90 alpha (green) in HeLa (Human epithelial cell line from cervix adenocarcinoma) cells and NIH/3T3 (Mouse embryo fibroblast cell line) cells. Formalin fixed cells were permeabilized with 0.1% Triton X-100 in TBS for 10 minutes at room temperature and blocked with 1% BSA for 15 minutes at room temperature. Cells were incubated with ab2928 at a dilution of 1:100 for at least 1 hour at room temperature, washed with PBS, and incubated with a DyLight 488 goat-anti-rabbit IgG secondary antibody (1:400) for 30 minutes at room temperature. Nuclei (blue) were stained with Hoechst 33342 dye. Images were taken at 20X magnification.



Western blot - Anti-Hsp90 alpha antibody (ab2928)

**All lanes :** Anti-Hsp90 alpha antibody (ab2928) at 1/2000 dilution

**Lane 1 :** HeLa cell lysate

**Lane 2 :** A549 cell lysate

**Lane 3 :** LNCaP cell lysate

**Lane 4 :** NIH/3T3 cell lysate

**Lane 5 :** Mouse testis tissue lysate

**Lane 6 :** Rat testis tissue lysate

Lysates/proteins at 30 µg per lane.

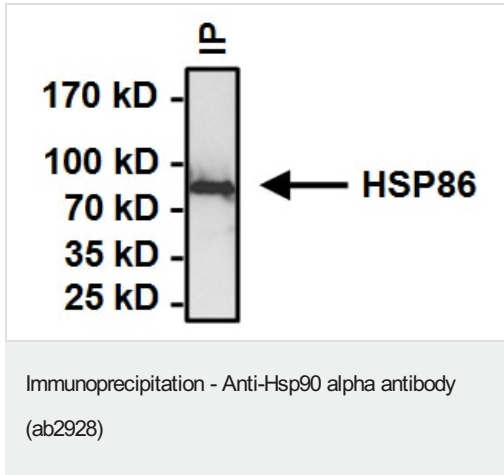
## Secondary

**All lanes :** Goat anti-Rabbit IgG (H+L) Superclonal™ Recombinant,

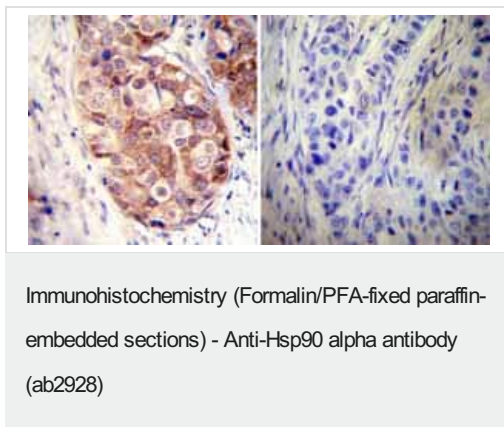
HRP at 1/4000 dilution

**Observed band size:** 80 kDa

Detected by chemiluminescence

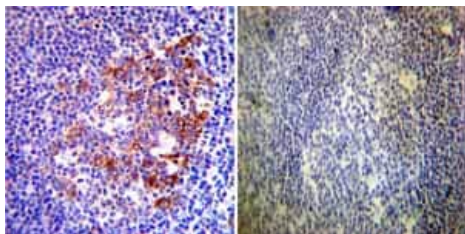


Immunoprecipitation of HSP90 alpha was performed on HeLa (Human epithelial cell line from cervix adenocarcinoma) cells. Antigen-antibody complexes formed by incubating 500ug whole cell lysate with 2ug of ab2928 overnight on a rocking platform at 4°C. The immune complexes were captured on 50ul Protein A/G Plus Agarose, washed extensively, and eluted with buffer. Samples were then resolved on a 4-20% Tris-HCl polyacrylamide gel, transferred to a PVDF membrane and blocked with 5% BSA/TBST for at least 1 hour. The membrane was probed with ab2928 at a dilution of 1:1000 overnight rotating at 4°C. The membrane was washed in TBST, and probed with detection reagent at a dilution of 1:1000 for at least 1 hour. Chemiluminescent detection was performed.



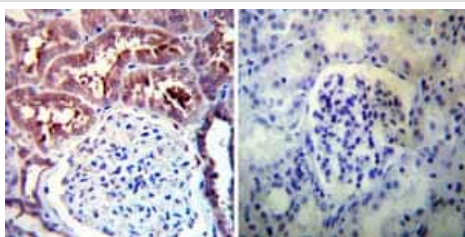
Immunohistochemistry was performed on both normal and cancer biopsies of deparaffinized human breast carcinoma tissues. To expose target proteins heat induced antigen retrieval was performed using 10mM sodium citrate (pH6.0) buffer microwaved for 8-15 minutes. Following antigen retrieval tissues were blocked in 3% BSA-PBS for 30 minutes at room temperature. Tissues were then probed at a dilution of 1:50 with a rabbit polyclonal antibody recognizing Heat Shock Protein 90 (86) ab2928 or without primary antibody (negative control) overnight at 4°C in a humidified chamber. Tissues were washed extensively with PBST and endogenous peroxidase activity was quenched with a peroxidase suppressor. Detection was performed using a biotin-conjugated secondary antibody and SA-HRP followed by colorimetric detection using DAB. Tissues were counterstained with hematoxylin and prepped for mounting.





Immunohistochemistry (Formalin/PFA-fixed paraffin-embedded sections) - Anti-Hsp90 alpha antibody (ab2928)

Immunohistochemistry was performed on both normal and cancer biopsies of deparaffinized human tonsil tissue. To expose target proteins heat induced antigen retrieval was performed using 10mM sodium citrate (pH6.0) buffer microwaved for 8-15 minutes. Following antigen retrieval tissues were blocked in 3% BSA-PBS for 30 minutes at room temperature. Tissues were then probed at a dilution of 1:200 with a rabbit polyclonal antibody recognizing Heat Shock Protein 90 (86) ab2928 or without primary antibody (negative control) overnight at 4°C in a humidified chamber. Tissues were washed extensively with PBST and endogenous peroxidase activity was quenched with a peroxidase suppressor. Detection was performed using a biotin-conjugated secondary antibody and SA-HRP followed by colorimetric detection using DAB. Tissues were counterstained with hematoxylin and prepped for mounting.



Immunohistochemistry (Formalin/PFA-fixed paraffin-embedded sections) - Anti-Hsp90 alpha antibody (ab2928)

Immunohistochemistry was performed on both normal and cancer biopsies of deparaffinized human kidney tissue. To expose target proteins heat induced antigen retrieval was performed using 10mM sodium citrate (pH6.0) buffer microwaved for 8-15 minutes. Following antigen retrieval tissues were blocked in 3% BSA-PBS for 30 minutes at room temperature. Tissues were then probed at a dilution of 1:100 with a rabbit polyclonal antibody recognizing Heat Shock Protein 90 (86) ab2928 or without primary antibody (negative control) overnight at 4°C in a humidified chamber. Tissues were washed extensively with PBST and endogenous peroxidase activity was quenched with a peroxidase suppressor. Detection was performed using a biotin-conjugated secondary antibody and SA-HRP followed by colorimetric detection using DAB. Tissues were counterstained with hematoxylin and prepped for mounting.

**Please note:** All products are "FOR RESEARCH USE ONLY. NOT FOR USE IN DIAGNOSTIC PROCEDURES"

### Our Abpromise to you: Quality guaranteed and expert technical support

- Replacement or refund for products not performing as stated on the datasheet
- Valid for 12 months from date of delivery
- Response to your inquiry within 24 hours
- We provide support in Chinese, English, French, German, Japanese and Spanish
- Extensive multi-media technical resources to help you
- We investigate all quality concerns to ensure our products perform to the highest standards

If the product does not perform as described on this datasheet, we will offer a refund or replacement. For full details of the Abpromise, please visit <https://www.abcam.co.jp/abpromise> or contact our technical team.

#### **Terms and conditions**

---

- Guarantee only valid for products bought direct from Abcam or one of our authorized distributors