

Anti-Hsp90 alpha antibody [68/Hsp90] ab282108

KO 評価済 リコンビナント

1 References 画像数 5

製品の概要

製品名	Anti-Hsp90 alpha antibody [68/Hsp90]
製品の詳細	Mouse monoclonal [68/Hsp90] to Hsp90 alpha
由来種	Mouse
アプリケーション	適用あり: WB, ICC/IF 適用なし: IP
種交差性	交差種: Human
免疫原	Recombinant fragment. This information is proprietary to Abcam and/or its suppliers.
ポジティブ・コントロール	WB: Wild-type HEK-293T, Jurkat and HeLa, K-562 lysates. ICC: 293T, HeLa cells.
特記事項	<p>This antibody clone is manufactured by Abcam. If you require a custom buffer formulation or conjugation for your experiments, please contact orders@abcam.com.</p> <p>This product is a recombinant monoclonal antibody, which offers several advantages including:</p> <ul style="list-style-type: none">- High batch-to-batch consistency and reproducibility- Improved sensitivity and specificity- Long-term security of supply- Animal-free production <p>For more information see here.</p>

製品の特性

製品の状態	Liquid
保存方法	Shipped at 4°C. Store at +4°C short term (1-2 weeks). Upon delivery aliquot. Store at -20°C. Avoid freeze / thaw cycle.
バッファー	pH: 7.20 Preservative: 0.01% Sodium azide Constituents: 59% PBS, 40% Glycerol (glycerin, glycerine), 0.05% BSA
精製度	Protein A purified
ポリ/モノ	モノクローナル
クローン名	68/Hsp90
アイソタイプ	IgG1

アプリケーション

The Abpromise guarantee Abpromise保証は、次のテスト済みアプリケーションにおけるab282108の使用に適用されます
アプリケーションノートには、推奨の開始希釈率がありますが、適切な希釈率につきましてはご検討ください。

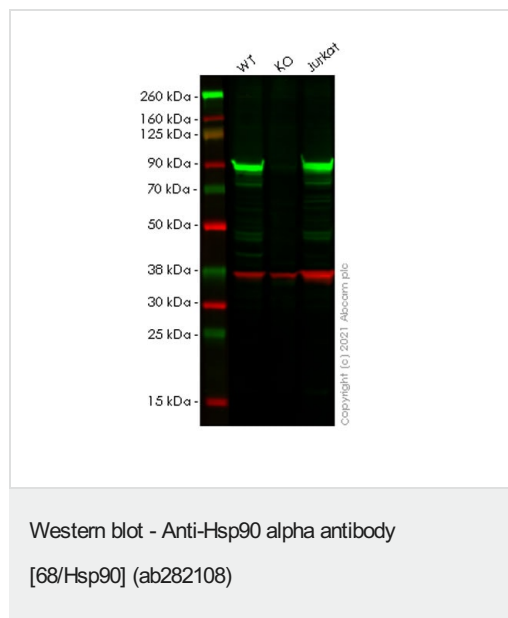
アプリケーション	Abreviews	特記事項
WB		1/1000.
ICC/IF		1/50.

追加情報 Is unsuitable for IP.

ターゲット情報

機能	Molecular chaperone. Has ATPase activity.
配列類似性	Belongs to the heat shock protein 90 family.
翻訳後修飾	ISGylated.
細胞内局在	Cytoplasm. Melanosome. Identified by mass spectrometry in melanosome fractions from stage I to stage IV.

画像



All lanes : Anti-Hsp90 alpha antibody [68/Hsp90] (ab282108) at 1/1000 dilution

Lane 1 : Wild-type HEK-293T (human embryonic kidney epithelial cell) whole cell lysate

Lane 2 : HSP90AA1 KO HEK293T (human embryonic kidney epithelial cell) whole cell lysate

Lane 3 : Jurkat (human T cell leukemia T lymphocyte), whole cell lysate

Lysates/proteins at 20 µg per lane.

Secondary

All lanes : Goat Anti-Mouse IgG H&L (IRDye® 800CW) (**ab216772**) and Goat Anti-Rabbit IgG H&L (IRDye® 680RD) (**ab216777**) at 1/10000 dilution

Observed band size: 83 kDa

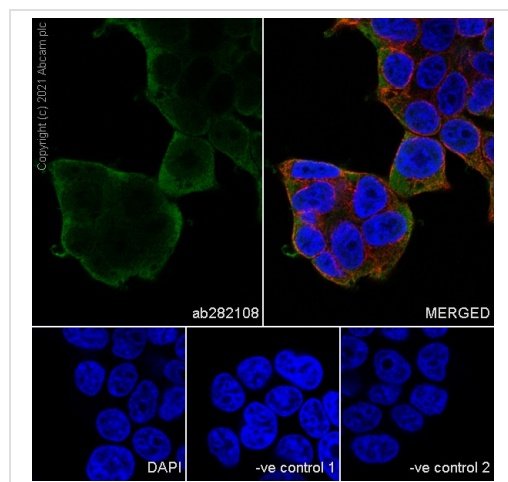
Blocking and diluting buffer and concentration: Intercept® (TBS)

Blocking Buffer diluted with an equal volume of 0.1% TBS.

Lanes 1-3: Merged signal (red and green). Green - ab282108 observed at 83KDa. Red - loading control **ab181602** (Rabbit monoclonal [EPR16891] to GAPDH) observed at 36 kDa.

Lanes 1-2: ab282108 Anti-Hsp90 alpha antibody was shown to react with Hsp90 alpha in HEK293T cells in Western blot. Loss of signal was observed when HSP90AA1 knockout sample was used. Wild-type and HSP90AA1 knockout samples were subjected to SDS-PAGE.

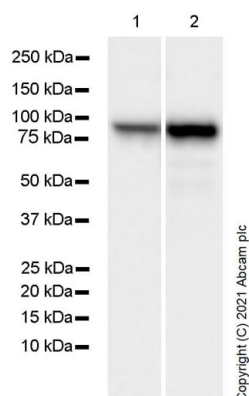
ab282108 and Anti-GAPDH antibody [EPR16891] - Loading Control (**ab181602**) were incubated at 4°C overnight at 1 in 1000 dilution and 1 in 20000 dilution respectively. Blots were developed with Goat anti-Rabbit IgG H&L (IRDye® 680CW) preadsorbed (**ab216777**) and Goat anti-Mouse IgG H&L (IRDye® 800RD) preadsorbed (**ab216772**) secondary antibodies at 1 in 10000 dilution for 1 hour at room temperature before imaging.



Immunocytochemistry/ Immunofluorescence - Anti-Hsp90 alpha antibody [68/Hsp90] (ab282108)

Immunofluorescent analysis of 4% Paraformaldehyde-fixed, 0.1% TritonX-100 permeabilized 293T cells labelling Hsp90 alpha with ab282108 at 1/50 (19.98 ug/ml) dilution, followed by **ab150113** Goat Anti-Mouse IgG H&L (Alexa Fluor® 488) antibody at 1/1000 dilution (Green). Confocal image showing cytoplasmic and weak nuclear staining in 293T cells **ab179513** Anti-beta Tubulin rabbit monoclonal antibody was used to counterstain tubulin at 1/200 dilution (Red). The Nuclear counterstain was DAPI (Blue).

Secondary antibody only control: Secondary antibody is **ab150113** Goat Anti-Mouse IgG H&L (Alexa Fluor® 488) at 1/1000 dilution.



Western blot - Anti-Hsp90 alpha antibody
[68/Hsp90] (ab282108)

All lanes : Anti-Hsp90 alpha antibody [68/Hsp90] (ab282108) at 1/1000 dilution

Lane 1 : HeLa (human epithelial cell line from cervix adenocarcinoma), whole cell lysate

Lane 2 : K-562 (human chronic myelogenous leukemia lymphoblast), whole cell lysate

Lysates/proteins at 20 µg per lane.

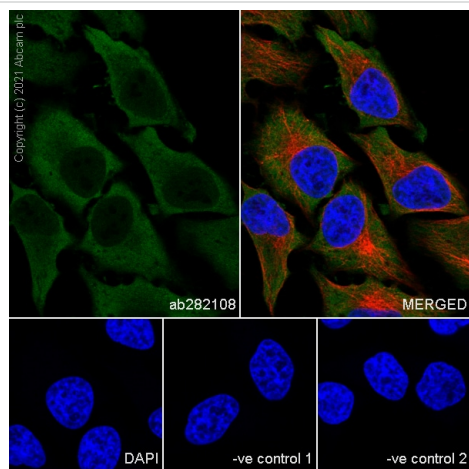
Secondary

All lanes : Peroxidase-Conjugated Goat anti-Mouse IgG (H+L) at 1/10000 dilution

Observed band size: 83 kDa

Blocking and diluting buffer and concentration: 5% NFDM/TBST

Exposure time: 7 seconds



Immunocytochemistry/ Immunofluorescence - Anti-Hsp90 alpha antibody [68/Hsp90] (ab282108)

Immunofluorescent analysis of 4% Paraformaldehyde-fixed, 0.1% TritonX-100 permeabilized HeLa cells labelling Hsp90 alpha with ab282108 at 1/50 (19.98 µg/ml) dilution, followed by **ab150113** Goat Anti-Mouse IgG H&L (Alexa Fluor® 488) antibody at 1/1000 dilution (Green). Confocal image showing cytoplasmic and weak nuclear staining in HeLa cells **ab179513** Anti-beta Tubulin rabbit monoclonal antibody was used to counterstain tubulin at 1/200 dilution (Red). The Nuclear counterstain was DAPI (Blue).

Secondary antibody only control: Secondary antibody is **ab150113** Goat Anti-Mouse IgG H&L (Alexa Fluor® 488) at 1/1000 dilution.

Why choose a recombinant antibody?



Research with confidence
Consistent and reproducible results



Long-term and scalable supply
Recombinant technology



Success from the first experiment
Confirmed specificity



Ethical standards compliant
Animal-free production

Anti-Hsp90 antibody [68/Hsp90] (ab282108)

Please note: All products are "FOR RESEARCH USE ONLY. NOT FOR USE IN DIAGNOSTIC PROCEDURES"

Our Abpromise to you: Quality guaranteed and expert technical support

- Replacement or refund for products not performing as stated on the datasheet
- Valid for 12 months from date of delivery
- Response to your inquiry within 24 hours
- We provide support in Chinese, English, French, German, Japanese and Spanish
- Extensive multi-media technical resources to help you
- We investigate all quality concerns to ensure our products perform to the highest standards

If the product does not perform as described on this datasheet, we will offer a refund or replacement. For full details of the Abpromise, please visit <https://www.abcam.co.jp/abpromise> or contact our technical team.

Terms and conditions

- Guarantee only valid for products bought direct from Abcam or one of our authorized distributors