






Anti-HSD11B1 antibody ab39364

★★★★★ [2 Abreviews](#) [25 References](#) [画像数 2](#)

製品の概要

製品名	Anti-HSD11B1 antibody
製品の詳細	Rabbit polyclonal to HSD11B1
由来種	Rabbit
アプリケーション	適用あり: WB
種交差性	交差種: Human 交差が予測される動物種: Rabbit, Hamster, Cow, Cat, Dog, Monkey, Cynomolgus monkey, Macaque monkey 
免疫原	Synthetic peptide corresponding to Human HSD11B1 aa 50-150.  Run BLAST with   Run BLAST with 
特記事項	<p>The Life Science industry has been in the grips of a reproducibility crisis for a number of years. Abcam is leading the way in addressing this with our range of recombinant monoclonal antibodies and knockout edited cell lines for gold-standard validation. Please check that this product meets your needs before purchasing.</p> <p>If you have any questions, special requirements or concerns, please send us an inquiry and/or contact our Support team ahead of purchase. Recommended alternatives for this product can be found below, along with publications, customer reviews and Q&As</p>

製品の特性

製品の状態	Liquid
保存方法	Shipped at 4°C. Upon delivery aliquot and store at -20°C. Avoid freeze / thaw cycles.
バッファー	pH: 7.40 Preservative: 0.02% Sodium azide Constituents: 0.1% BSA, 50% Glycerol
精製度	Immunogen affinity purified
特記事項(精製)	ab39364 is an affinity purified IgG
ポリ/モノ	ポリクローナル
アイソタイプ	IgG

アプリケーション

The Abpromise guarantee

Abpromise保証は、次のテスト済みアプリケーションにおけるab39364の使用に適用されます

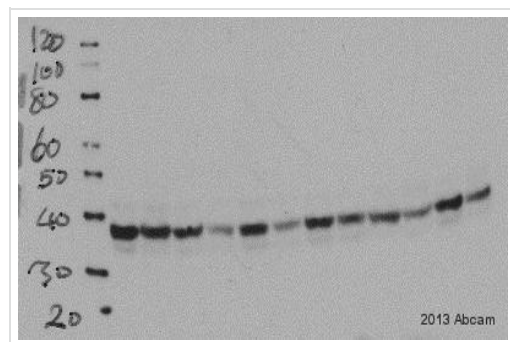
アプリケーションノートには、推奨の開始希釈率がありますが、適切な希釈率につきましてはご検討ください。

アプリケーション	Abreviews	特記事項
WB	★★★★★ (1)	Use a concentration of 1 µg/ml. Detects a band of approximately 35 kDa (predicted molecular weight: 32 kDa).

ターゲット情報

機能	Catalyzes reversibly the conversion of cortisol to the inactive metabolite cortisone. Catalyzes reversibly the conversion of 7-ketocholesterol to 7-beta-hydroxycholesterol. In intact cells, the reaction runs only in one direction, from 7-ketocholesterol to 7-beta-hydroxycholesterol.
組織特異性	Widely expressed. Highest expression in liver.
関連疾患	Defects in HSD11B1 are a cause of cortisone reductase deficiency (CRD) [MIM:604931]. In CRD, activation of cortisone to cortisol does not occur, resulting in adrenocorticotropin-mediated androgen excess and a phenotype resembling polycystic ovary syndrome (PCOS).
配列類似性	Belongs to the short-chain dehydrogenases/reductases (SDR) family.
翻訳後修飾	Glycosylated.
細胞内局在	Endoplasmic reticulum membrane.

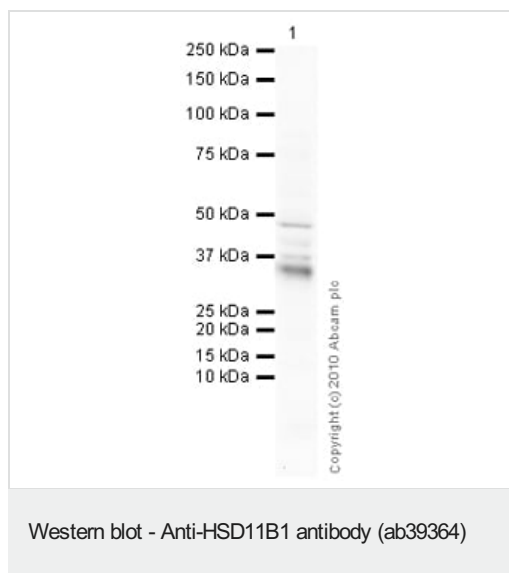
画像



Western blot analysis of Sheep liver tissue lysate (5µg/lane) labeling HSD11B1 with ab39364 at 1/500 (16 hours at 4°C). An undiluted HRP-conjugated Goat anti-rabbit IgG polyclonal was used as the secondary antibody.

Western blot - Anti-HSD11B1 antibody (ab39364)

This image is courtesy of an Abreview submitted by Rob Cordery-Cotter. Experimental work performed by Megan A. Walton.



Anti-HSD11B1 antibody (ab39364) at 1 µg/ml + Human liver tissue lysate - total protein (**ab29889**) at 10 µg

Secondary

Goat polyclonal to Rabbit IgG - H&L - Pre-Adsorbed (HRP) at 1/3000 dilution

Developed using the ECL technique.

Performed under reducing conditions.

Predicted band size: 32 kDa

Exposure time: 16 minutes

HSD11B1 contains a number of potential glycosylation sites (SwissProt) which may explain the higher migration pattern observed.

Please note: All products are "FOR RESEARCH USE ONLY. NOT FOR USE IN DIAGNOSTIC PROCEDURES"

Our Abpromise to you: Quality guaranteed and expert technical support

- Replacement or refund for products not performing as stated on the datasheet
- Valid for 12 months from date of delivery
- Response to your inquiry within 24 hours
- We provide support in Chinese, English, French, German, Japanese and Spanish
- Extensive multi-media technical resources to help you
- We investigate all quality concerns to ensure our products perform to the highest standards

If the product does not perform as described on this datasheet, we will offer a refund or replacement. For full details of the Abpromise, please visit <https://www.abcam.co.jp/abpromise> or contact our technical team.

Terms and conditions

- Guarantee only valid for products bought direct from Abcam or one of our authorized distributors