


# Anti-Hsc70 antibody ab125307

★★★★★ **1 Abreviews**    画像数 4

### 製品の概要

製品名	Anti-Hsc70 antibody
製品の詳細	Rabbit polyclonal to Hsc70
由来種	Rabbit
アプリケーション	<b>適用あり:</b> IHC-P, ICC/IF, WB
種交差性	<b>交差種:</b> Human, Recombinant fragment <b>交差が予測される動物種:</b> Mouse, Rat, Horse, Cow, Chinese hamster, Orangutan 
免疫原	Synthetic peptide conjugated to KLH derived from within residues 550 to the C-terminus of Human Hsc70. <a href="#">Immunogen の所有権に関して</a>
ポジティブ・コントロール	WB: Wild-type A431 cell lysate. Recombinant Hsc70 protein; A431, HeLa, MCF7, MDA MB 231, and HEK293 whole cell lysates. IHC-P: Human kidney tissue. ICC/IF: HepG2 and HeLa cells.
特記事項	<p>The Life Science industry has been in the grips of a reproducibility crisis for a number of years. Abcam is leading the way in addressing this with our range of recombinant monoclonal antibodies and knockout edited cell lines for gold-standard validation. Please check that this product meets your needs before purchasing.</p> <p>If you have any questions, special requirements or concerns, please send us an inquiry and/or contact our Support team ahead of purchase. Recommended alternatives for this product can be found below, along with publications, customer reviews and Q&amp;As</p>

### 製品の特性

製品の状態	Liquid
保存方法	Shipped at 4°C. Store at +4°C short term (1-2 weeks). Upon delivery aliquot. Store at -20°C or -80°C. Avoid freeze / thaw cycle.
バッファー	pH: 7.4 Preservative: 0.02% Sodium azide Constituent: PBS
精製度	Batches of this product that have a concentration < 1mg/ml may have BSA added as a stabilising agent. If you would like information about the formulation of a specific lot, please contact our scientific support team who will be happy to help.  Immunogen affinity purified

ポリモノ  
アイソタイプ

ポリクローナル  
IgG

## アプリケーション

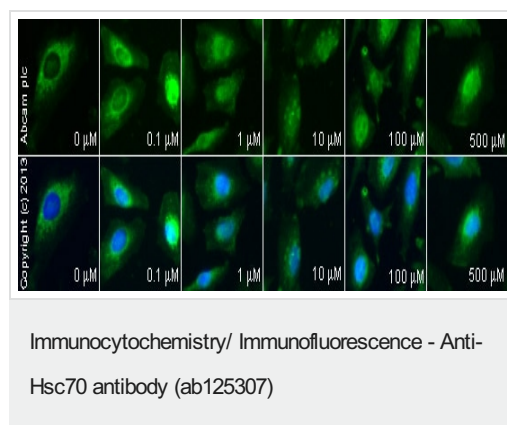
**The Abpromise guarantee** Abpromise保証は、次のテスト済みアプリケーションにおけるab125307の使用に適用されます  
アプリケーションノートには、推奨の開始希釈率がありますが、適切な希釈率につきましてはご確認ください。

アプリケーション	Abreviews	特記事項
IHC-P		Use a concentration of 1 µg/ml. Perform heat mediated antigen retrieval before commencing with IHC staining protocol.
ICC/IF	★☆☆☆☆ (1)	Use a concentration of 1 µg/ml.
WB		Use a concentration of 1 µg/ml. Detects a band of approximately 75 kDa (predicted molecular weight: 71 kDa).

## ターゲット情報

機能	Acts as a repressor of transcriptional activation. Inhibits the transcriptional coactivator activity of CITED1 on Smad-mediated transcription. Chaperone. Isoform 2 may function as an endogenous inhibitory regulator of HSC70 by competing the co-chaperones.
組織特異性	Ubiquitous.
配列類似性	Belongs to the heat shock protein 70 family.
ドメイン	The N-terminal 1-386 residues constitute the ATPase domain, while residues 387-646 form the peptide-binding domain.
翻訳後修飾	Phosphorylated upon DNA damage, probably by ATM or ATR. ISGylated.
細胞内局在	Cytoplasm. Melanosome. Localized in cytoplasmic mRNP granules containing untranslated mRNAs. Translocates rapidly from the cytoplasm to the nuclei, and especially to the nucleoli, upon heat shock. Identified by mass spectrometry in melanosome fractions from stage I to stage IV.

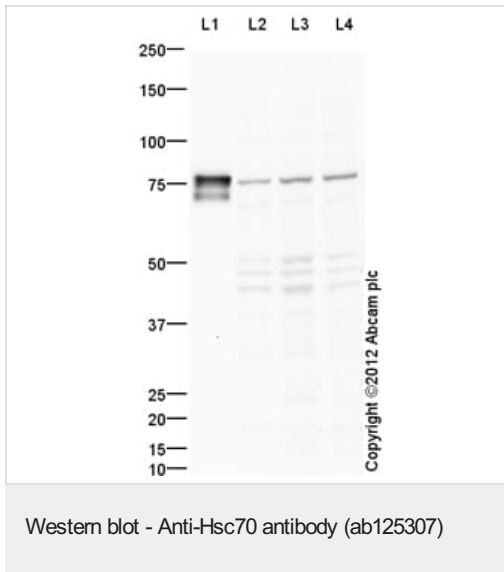
## 画像



ab125307 staining HSC70 in HeLa cells treated with (S)-(+)-ibuprofen (**ab141015**), by ICC/IF. Increase of HSC70 nuclear expression correlates with increased concentration of (S)-(+)-ibuprofen, as described in literature.

The cells were incubated at 37°C for 1 hour in media containing different concentrations of **ab141015** ((S)-(+)-ibuprofen) in DMSO, fixed with 4% formaldehyde for 10 minutes at room temperature and blocked with PBS containing 10% goat serum, 0.3 M glycine, 1% BSA and 0.1% tween for 2h at room temperature. Staining of the

treated cells with ab125307 (5 µg/ml) was performed overnight at 4°C in PBS containing 1% BSA and 0.1% tween. A DyLight 488 anti-rabbit polyclonal antibody ([ab96899](#)) at 1/250 dilution was used as the secondary antibody. Nuclei were counterstained with DAPI and are shown in blue.



**All lanes :** Anti-Hsc70 antibody (ab125307) at 1 µg/ml

**Lane 1 :** Recombinant Protein:Hsc70 (Active)

**Lane 2 :** MCF7 (Human breast adenocarcinoma cell line) Whole Cell Lysate

**Lane 3 :** MDA-MB-231 (Human breast adenocarcinoma cell line) Whole Cell Lysate

**Lane 4 :** HEK293 (Human embryonic kidney cell line) Whole Cell Lysate

Lysates/proteins at 10 µg per lane.

### Secondary

**All lanes :** Goat Anti-Rabbit IgG H&L (HRP) preadsorbed ([ab97080](#)) at 1/5000 dilution

Developed using the ECL technique.

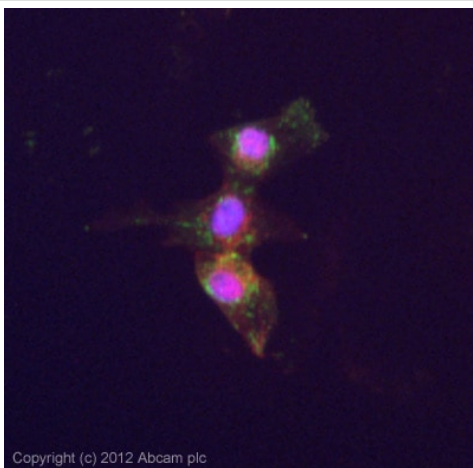
Performed under reducing conditions.

**Predicted band size:** 71 kDa

**Observed band size:** 75 kDa

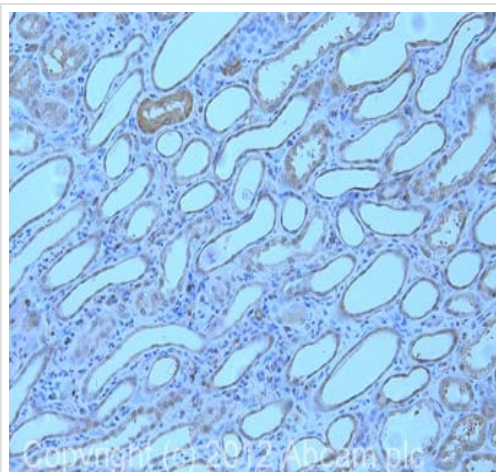
**Additional bands at:** 46 kDa, 52 kDa. We are unsure as to the identity of these extra bands.

**Exposure time:** 4 minutes



Immunocytochemistry/ Immunofluorescence - Anti-Hsc70 antibody (ab125307)

ICC/IF image of ab125307 stained HepG2 cells. The cells were 4% formaldehyde fixed (10 min) and then incubated in 1%BSA / 10% normal goat serum / 0.3M glycine in 0.1% PBS-Tween for 1h to permeabilise the cells and block non-specific protein-protein interactions. The cells were then incubated with the antibody (ab125307, 1µg/ml) overnight at +4°C. The secondary antibody (green) was **ab96899**, DyLight® 488 goat anti-rabbit IgG (H+L) used at a 1/250 dilution for 1h. Alexa Fluor® 594 WGA was used to label plasma membranes (red) at a 1/200 dilution for 1h. DAPI was used to stain the cell nuclei (blue) at a concentration of 1.43µM. This antibody also gave a positive result in 4% formaldehyde fixed (10 min) HeLa cells at 1µg/ml, and in 100% methanol fixed (5 min) HeLa, HepG2 and MCF7 cells at 1µg/ml.



Immunohistochemistry (Formalin/PFA-fixed paraffin-embedded sections) - Anti-Hsc70 antibody (ab125307)

IHC image of ab125307 staining in human kidney formalin fixed paraffin embedded tissue section, performed on a Leica Bond™ system using the standard protocol F. The section was pre-treated using heat mediated antigen retrieval with sodium citrate buffer (pH6, epitope retrieval solution 1) for 20 mins. The section was then incubated with **ab125307**, 1µg/ml, for 15 mins at room temperature and detected using an HRP conjugated compact polymer system. DAB was used as the chromogen. The section was then counterstained with haematoxylin and mounted with DPX.

For other IHC staining systems (automated and non-automated) customers should optimize variable parameters such as antigen retrieval conditions, primary antibody concentration and antibody incubation times.

**Please note:** All products are "FOR RESEARCH USE ONLY. NOT FOR USE IN DIAGNOSTIC PROCEDURES"

### Our Abpromise to you: Quality guaranteed and expert technical support

- Replacement or refund for products not performing as stated on the datasheet
- Valid for 12 months from date of delivery
- Response to your inquiry within 24 hours
- We provide support in Chinese, English, French, German, Japanese and Spanish
- Extensive multi-media technical resources to help you
- We investigate all quality concerns to ensure our products perform to the highest standards

If the product does not perform as described on this datasheet, we will offer a refund or replacement. For full details of the Abpromise, please visit <https://www.abcam.co.jp/abpromise> or contact our technical team.

## Terms and conditions

---

- Guarantee only valid for products bought direct from Abcam or one of our authorized distributors