


### HRP Anti-UQCRFS1/RISP antibody [5A5] ab198392

画像数 1

#### 製品の概要

製品名	HRP Anti-UQCRFS1/RISP antibody [5A5]
製品の詳細	HRP Mouse monoclonal [5A5] to UQCRFS1/RISP
由来種	Mouse
標識	HRP
アプリケーション	適用あり: WB
種交差性	交差種: Human 交差が予測される動物種: Mouse, Rat, Cow 
免疫原	Full length native protein (purified). This information is proprietary to Abcam and/or its suppliers.
ポジティブ・コントロール	WB: Human heart mitochondria lysate.
特記事項	<p>The Life Science industry has been in the grips of a reproducibility crisis for a number of years. Abcam is leading the way in addressing this with our range of recombinant monoclonal antibodies and knockout edited cell lines for gold-standard validation. Please check that this product meets your needs before purchasing.</p> <p>If you have any questions, special requirements or concerns, please send us an inquiry and/or contact our Support team ahead of purchase. Recommended alternatives for this product can be found below, along with publications, customer reviews and Q&amp;As</p>

#### 製品の特性

製品の状態	Liquid
保存方法	Shipped at 4°C. Store at +4°C short term (1-2 weeks). Upon delivery aliquot. Store at -20°C. Avoid freeze / thaw cycle. Store In the Dark.
バッファー	pH: 7.40 Preservative: 0.1% Proclin 300 Solution Constituents: 30% Glycerol (glycerin, glycerine), 1% BSA, PBS
精製度	Immunogen affinity purified
ポリ/モノ	モノクローナル
クローン名	5A5
アイソタイプ	IgG2b
軽鎖の種類	kappa

## アプリケーション

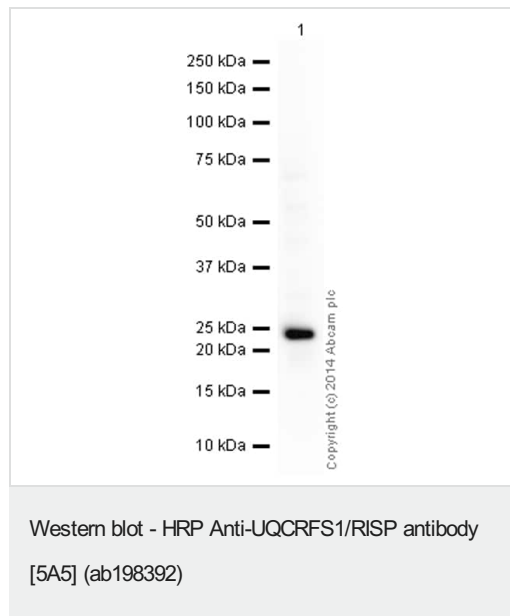
**The Abpromise guarantee** Abpromise保証は、 次のテスト済みアプリケーションにおけるab198392の使用に適用されます  
アプリケーションノートには、推奨の開始希釈率がありますが、適切な希釈率につきましてはご検討ください。

アプリケーション	Abreviews	特記事項
WB		1/5000. Detects a band of approximately 25 kDa (predicted molecular weight: 30 kDa).

## ターゲット情報

機能	Component of the ubiquinol-cytochrome c reductase complex (complex III or cytochrome b-c1 complex), which is a respiratory chain that generates an electrochemical potential coupled to ATP synthesis. The transit peptide of the Rieske protein seems to form part of the bc1 complex and is considered to be the subunit 11/IX of that complex.
配列類似性	Contains 1 Rieske domain.
細胞内局在	Mitochondrion inner membrane.

## 画像



HRP Anti-UQCRFS1/RISP antibody [5A5] (ab198392) at 1/5000 dilution + Human heart tissue lysate - mitochondrial extract (**ab110337**) at 5 µg

Developed using the ECL technique.

Performed under reducing conditions.

**Predicted band size:** 30 kDa

**Observed band size:** 25 kDa

**Exposure time:** 30 seconds

This blot was produced using a 4-12% Bis-tris gel under the MES buffer system. The gel was run at 200V for 35 minutes before being transferred onto a Nitrocellulose membrane at 30V for 70 minutes. The membrane was then blocked for an hour using 2% Bovine Serum Albumin before being incubated with ab198392 overnight at 4°C. Antibody binding was visualised using ECL development

**Please note:** All products are "FOR RESEARCH USE ONLY. NOT FOR USE IN DIAGNOSTIC PROCEDURES"

### **Our Abpromise to you: Quality guaranteed and expert technical support**

---

- Replacement or refund for products not performing as stated on the datasheet
- Valid for 12 months from date of delivery
- Response to your inquiry within 24 hours
- We provide support in Chinese, English, French, German, Japanese and Spanish
- Extensive multi-media technical resources to help you
- We investigate all quality concerns to ensure our products perform to the highest standards

If the product does not perform as described on this datasheet, we will offer a refund or replacement. For full details of the Abpromise, please visit <https://www.abcam.co.jp/abpromise> or contact our technical team.

### **Terms and conditions**

---

- Guarantee only valid for products bought direct from Abcam or one of our authorized distributors