


HRP Anti-Tubulin antibody [YL1/2] - Loading Control ab197740

2 References [画像数 2](#)

製品の概要

製品名	HRP Anti-Tubulin antibody [YL1/2] - Loading Control
製品の詳細	HRP Rat monoclonal [YL1/2] to Tubulin - Loading Control
由来種	Rat
標識	HRP
アプリケーション	適用あり: IHC-P, WB
種交差性	交差種: Mouse, Rat, Human 交差が予測される動物種: Pig, Saccharomyces cerevisiae, Xenopus laevis, Caenorhabditis elegans, Drosophila melanogaster, Schizosaccharomyces pombe, a wide range of other species, Mammals, African green monkey 
免疫原	Full length native protein (purified) corresponding to Saccharomyces cerevisiae Tubulin.
エピトープ	A linear sequence requiring an aromatic residue at the C terminus, with the two adjacent amino acids being negatively charged (represented by Gly-Gly-Tyr in Tyr-Tubulin).
ポジティブ・コントロール	WB: HeLa, NIH 3T3 and PC12 whole cell lysates. IHC-P: Normal human colon tissue.
特記事項	<p>The Life Science industry has been in the grips of a reproducibility crisis for a number of years. Abcam is leading the way in addressing this with our range of recombinant monoclonal antibodies and knockout edited cell lines for gold-standard validation. Please check that this product meets your needs before purchasing.</p> <p>If you have any questions, special requirements or concerns, please send us an inquiry and/or contact our Support team ahead of purchase. Recommended alternatives for this product can be found below, along with publications, customer reviews and Q&As</p>

製品の特性

製品の状態	Liquid
保存方法	Shipped at 4°C. Store at +4°C short term (1-2 weeks). Upon delivery aliquot. Store at -20°C or -80°C. Avoid freeze / thaw cycle. Store In the Dark.
バッファー	<p>pH: 7.40</p> <p>Preservative: 0.1% Proclin 300 Solution</p> <p>Constituents: 30% Glycerol (glycerin, glycerine), 1% BSA, PBS</p>
精製度	Affinity purified

ポリ/モノ	モノクローナル
クローン名	YL1/2
アイソタイプ	IgG2a

アプリケーション

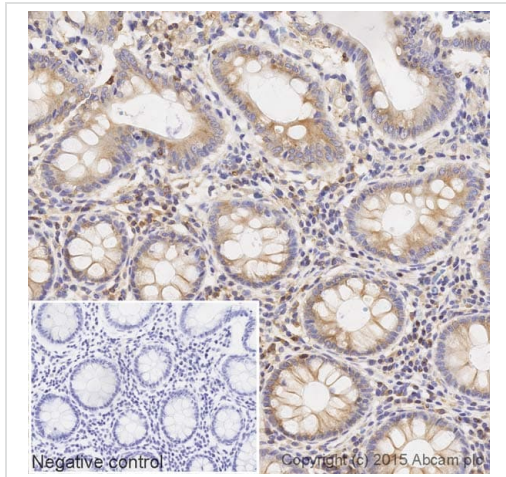
The Abpromise guarantee **Abpromise保証は、**次のテスト済みアプリケーションにおけるab197740の使用に適用されます
アプリケーションノートには、推奨の開始希釈率がありますが、適切な希釈率につきましてはご検討ください。

アプリケーション	Abreviews	特記事項
IHC-P		1/500.
WB		1/5000. Detects a band of approximately 52 kDa.

ターゲット情報

機能	Tubulin is the major constituent of microtubules. It binds two moles of GTP, one at an exchangeable site on the beta chain and one at a non-exchangeable site on the alpha-chain.
配列類似性	Belongs to the tubulin family.
翻訳後修飾	<p>Undergoes a tyrosination/detyrosination cycle, the cyclic removal and re-addition of a C-terminal tyrosine residue by the enzymes tubulin tyrosine carboxypeptidase (TTCP) and tubulin tyrosine ligase (TTL), respectively.</p> <p>Some glutamate residues at the C-terminus are polyglutamylated. This modification occurs exclusively on glutamate residues and results in polyglutamate chains on the gamma-carboxyl group. Also monoglycylated but not polyglycylated due to the absence of functional TTL10 in human. Monoglycylation is mainly limited to tubulin incorporated into axonemes (cilia and flagella) whereas glutamylation is prevalent in neuronal cells, centrioles, axonemes, and the mitotic spindle. Both modifications can coexist on the same protein on adjacent residues, and lowering glycylation levels increases polyglutamylation, and reciprocally. The precise function of such modifications is still unclear but they regulate the assembly and dynamics of axonemal microtubules.</p> <p>Acetylation of alpha-tubulins at Lys-40 stabilizes microtubules and affects affinity and processivity of microtubule motors. This modification has a role in multiple cellular functions, ranging from cell motility, cell cycle progression or cell differentiation to intracellular trafficking and signaling.</p>
細胞内局在	Cytoplasm > cytoskeleton.

画像

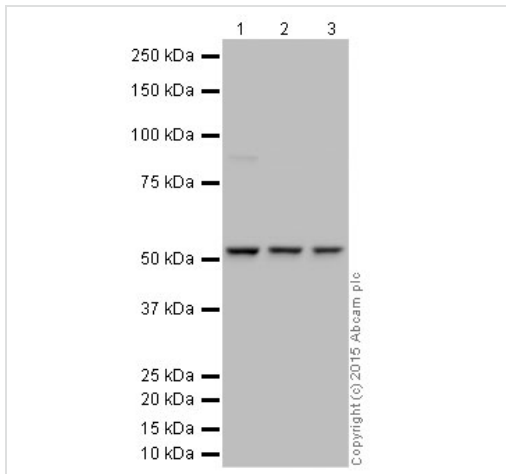


Immunohistochemistry (Formalin/PFA-fixed paraffin-embedded sections) - HRP Anti-Tubulin antibody [YL1/2] - Loading Control (ab197740)

IHC image of Tubulin staining in a section of formalin-fixed paraffin-embedded normal human colon tissue*, performed on a Leica BOND. The section was pre-treated using heat mediated antigen retrieval with sodium citrate buffer (pH6, epitope retrieval solution 1) for 20mins. The section was then incubated with ab197740, 1/500 dilution, for 15 mins at room temperature. DAB was used as the chromogen. The section was then counterstained with haematoxylin and mounted with DPX. The inset negative control image is taken from an identical assay without primary antibody.

For other IHC staining systems (automated and non-automated) customers should optimize variable parameters such as antigen retrieval conditions, primary antibody concentration and antibody incubation times.

*Tissue obtained from the Human Research Tissue Bank, supported by the NIHR Cambridge Biomedical Research Centre



Western blot - HRP Anti-Tubulin antibody [YL1/2] - Loading Control (ab197740)

All lanes : HRP Anti-Tubulin antibody [YL1/2] - Loading Control (ab197740) at 1/5000 dilution

Lane 1 : HeLa (Human epithelial carcinoma cell line) Whole Cell Lysate

Lane 2 : NIH 3T3 (Mouse embryonic fibroblast cell line) Whole Cell Lysate

Lane 3 : PC12 (Rat adrenal pheochromocytoma cell line) Whole Cell Lysate

Lysates/proteins at 10 µg per lane.

Developed using the ECL technique.

Performed under reducing conditions.

Observed band size: 52 kDa

Exposure time: 10 seconds

This blot was produced using a 4-12% Bis-tris gel under the MOPS buffer system. The gel was run at 200V for 50 minutes before being transferred onto a Nitrocellulose membrane at 30V for 70 minutes. The membrane was then blocked for an hour using 3% milk before being incubated with ab197740 overnight at 4°C. Antibody binding was visualised using ECL development solution **ab133406**.

Please note: All products are "FOR RESEARCH USE ONLY. NOT FOR USE IN DIAGNOSTIC PROCEDURES"

Our Abpromise to you: Quality guaranteed and expert technical support

- Replacement or refund for products not performing as stated on the datasheet
- Valid for 12 months from date of delivery
- Response to your inquiry within 24 hours
- We provide support in Chinese, English, French, German, Japanese and Spanish
- Extensive multi-media technical resources to help you
- We investigate all quality concerns to ensure our products perform to the highest standards

If the product does not perform as described on this datasheet, we will offer a refund or replacement. For full details of the Abpromise, please visit **<https://www.abcam.co.jp/abpromise>** or contact our technical team.

Terms and conditions

- Guarantee only valid for products bought direct from Abcam or one of our authorized distributors