

HRP Anti-pan Cadherin antibody [mAbcam22744] ab197725

画像数 1

製品の概要

製品名	HRP Anti-pan Cadherin antibody [mAbcam22744]
製品の詳細	HRP Mouse monoclonal [mAbcam22744] to pan Cadherin
由来種	Mouse
標識	HRP
アプリケーション	適用あり: WB
種交差性	<p>交差種: Mouse, Rat, Human</p> <p>交差が予測される動物種: Chicken, Dog, Xenopus laevis, Zebrafish </p>
免疫原	Synthetic peptide. This information is proprietary to Abcam and/or its suppliers.
ポジティブ・コントロール	WB: Rat, mouse and human heart tissue lysates.
特記事項	<p>The Life Science industry has been in the grips of a reproducibility crisis for a number of years. Abcam is leading the way in addressing this with our range of recombinant monoclonal antibodies and knockout edited cell lines for gold-standard validation. Please check that this product meets your needs before purchasing.</p> <p>If you have any questions, special requirements or concerns, please send us an inquiry and/or contact our Support team ahead of purchase. Recommended alternatives for this product can be found below, along with publications, customer reviews and Q&As</p>

製品の特性

製品の状態	Liquid
保存方法	Shipped at 4°C. Store at +4°C short term (1-2 weeks). Upon delivery aliquot. Store at -20°C. Stable for 12 months at -20°C. Store In the Dark.
バッファー	<p>pH: 7.40</p> <p>Preservative: 0.1% Proclin 300 Solution</p> <p>Constituents: 30% Glycerol (glycerin, glycerine), 1% BSA, PBS</p>
精製度	Affinity purified
ポリ/モノ	モノクローナル
クローン名	mAbcam22744
ミエローマ	Sp2/0-Ag14
アイソタイプ	IgG1

アプリケーション

The Abpromise guarantee **Abpromise保証は、**次のテスト済みアプリケーションにおけるab197725の使用に適用されます
アプリケーションノートには、推奨の開始希釈率がありますが、適切な希釈率につきましてはご検討ください。

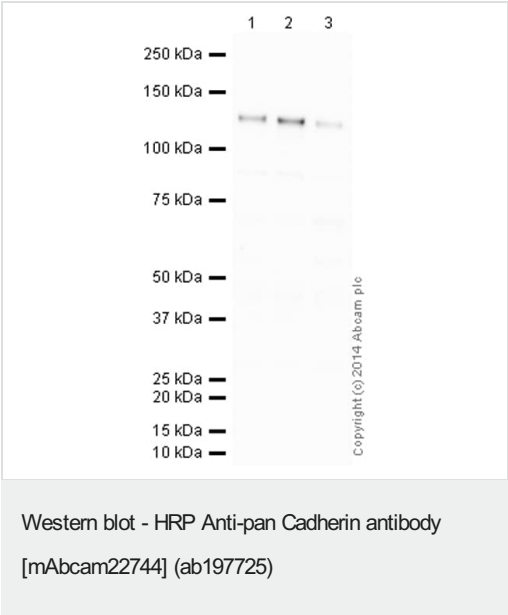
アプリケーション	Abreviews	特記事項
WB		1/5000. Detects a band of approximately 125 kDa (predicted molecular weight: 125 kDa).

ターゲット情報

関連性

Cadherins are members of a multigene family of single chain glycoprotein receptors mediating calcium dependent cell-cell adhesion. They play an important role in the growth and development of cells via the mechanisms of control of tissue architecture and the maintenance of tissue integrity. Cadherins are expressed in a tissue specific manner and are required for assembly of cells into solid tissue. Individual cadherin molecules are known to co-operate with each other to form a linear cell adhesion zipper. In adhesion junctions cadherins are bound to beta and gamma catenins which in turn bind to alpha catenin, an actin binding protein. Cadherins play an important part in tumor invasion and metastasis.

画像



All lanes : HRP Anti-pan Cadherin antibody [mAbcam22744]
(ab197725) at 1/5000 dilution

- Lane 1 :** Heart (Rat) Tissue Lysate
- Lane 2 :** Heart (Mouse) Tissue Lysate
- Lane 3 :** Heart (Human) Tissue Lysate - adult normal tissue

Lysates/proteins at 20 µg per lane.

Developed using the ECL technique.

Performed under reducing conditions.

Predicted band size: 125 kDa
Observed band size: 125 kDa

Exposure time: 1 minute

This blot was produced using a 4-12% Bis-tris gel under the MOPS buffer system. The gel was run at 200V for 50 minutes before being transferred onto a Nitrocellulose membrane at 30V for 70 minutes. The membrane was then blocked for an hour using 2% Bovine Serum Albumin before being incubated with ab197725 overnight at 4°C. Antibody binding was visualised using ECL development solution **ab133406**.

Please note: All products are "FOR RESEARCH USE ONLY. NOT FOR USE IN DIAGNOSTIC PROCEDURES"

Our Abpromise to you: Quality guaranteed and expert technical support

- Replacement or refund for products not performing as stated on the datasheet
- Valid for 12 months from date of delivery
- Response to your inquiry within 24 hours
- We provide support in Chinese, English, French, German, Japanese and Spanish
- Extensive multi-media technical resources to help you
- We investigate all quality concerns to ensure our products perform to the highest standards

If the product does not perform as described on this datasheet, we will offer a refund or replacement. For full details of the Abpromise, please visit <https://www.abcam.co.jp/abpromise> or contact our technical team.

Terms and conditions

- Guarantee only valid for products bought direct from Abcam or one of our authorized distributors