


HRP Anti-MSI2 antibody [EP1305Y] ab199252

リコンビナント **RabMAb**

画像数 2

製品の概要

製品名	HRP Anti-MSI2 antibody [EP1305Y]
製品の詳細	HRP Rabbit monoclonal [EP1305Y] to MSI2
由来種	Rabbit
標識	HRP
アプリケーション	適用あり: WB
種交差性	交差種: Human 交差が予測される動物種: Mouse, Rat 
免疫原	Synthetic peptide. This information is proprietary to Abcam and/or its suppliers.
エピトープ	Based on the immunogen sequence for this antibody, it is not predicted to detect the shorter isoforms of MSI2.
ポジティブ・コントロール	WB: SW480 whole cell lysate.
特記事項	Our RabMAb [®] technology is a patented hybridoma-based technology for making rabbit monoclonal antibodies. For details on our patents, please refer to RabMAb[®] patents .

製品の特性

製品の状態	Liquid
保存方法	Shipped at 4°C. Store at +4°C short term (1-2 weeks). Upon delivery aliquot. Store at -20°C. Avoid freeze / thaw cycle. Store In the Dark.
バッファー	pH: 7.40 Preservative: 0.1% Proclin 300 Solution Constituents: PBS, 30% Glycerol (glycerin, glycerine), 1% BSA
精製度	Protein A purified
ポリ/モノ	モノクローナル
クローン名	EP1305Y
アイソタイプ	IgG

アプリケーション

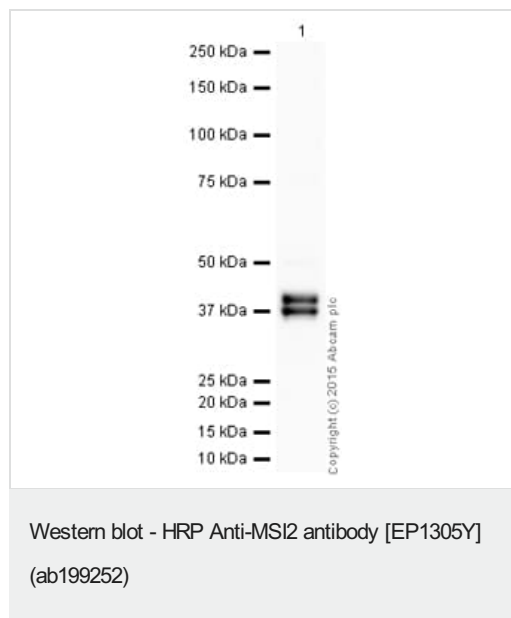
The Abpromise guarantee Abpromise保証は、次のテスト済みアプリケーションにおけるab199252の使用に適用されます
アプリケーションノートには、推奨の開始希釈率がありますが、適切な希釈率につきましてはご検討ください。

アプリケーション	Abreviews	特記事項
WB		1/5000. Detects a band of approximately 39,37 kDa (predicted molecular weight: 35 kDa).

ターゲット情報

機能	RNA binding protein that regulates the expression of target mRNAs at the translation level. May play a role in the proliferation and maintenance of stem cells in the central nervous system.
組織特異性	Ubiquitous; detected at low levels.
関連疾患	Note=Chromosomal aberrations involving MSI2 may contribute to disease progression in chronic myeloid leukemia. Translocation t(7;17)(p15;q23) with HOXA9; translocation t(7;17)(q32-34;q23).
配列類似性	Belongs to the Musashi family. Contains 2 RRM (RNA recognition motif) domains.
翻訳後修飾	Phosphorylated.
細胞内局在	Cytoplasm. Associated with polysomes.

画像



HRP Anti-MSI2 antibody [EP1305Y] (ab199252) at 1/5000 dilution
+ SW480 (Human colon adenocarcinoma cell line) Whole Cell
Lysate at 20 µg

Developed using the ECL technique.

Performed under reducing conditions.

Predicted band size: 35 kDa

Observed band size: 37,39 kDa

Exposure time: 8 minutes

This blot was produced using a 4-12% Bis-tris gel under the MOPS buffer system. The gel was run at 200V for 50 minutes before being transferred onto a Nitrocellulose membrane at 30V for 70 minutes. The membrane was then blocked for an hour using 3% milk before being incubated with ab199252 overnight at 4°C. Antibody binding was visualised using ECL development solution **ab133406**.

Why choose a recombinant antibody?



Research with confidence
Consistent and reproducible results



Long-term and scalable supply
Recombinant technology



Success from the first experiment
Confirmed specificity



Ethical standards compliant
Animal-free production

HRP Anti-MSI2 antibody [EP1305Y] (ab199252)

Please note: All products are "FOR RESEARCH USE ONLY. NOT FOR USE IN DIAGNOSTIC PROCEDURES"

Our Abpromise to you: Quality guaranteed and expert technical support

- Replacement or refund for products not performing as stated on the datasheet
- Valid for 12 months from date of delivery
- Response to your inquiry within 24 hours
- We provide support in Chinese, English, French, German, Japanese and Spanish
- Extensive multi-media technical resources to help you
- We investigate all quality concerns to ensure our products perform to the highest standards

If the product does not perform as described on this datasheet, we will offer a refund or replacement. For full details of the Abpromise, please visit <https://www.abcam.co.jp/abpromise> or contact our technical team.

Terms and conditions

- Guarantee only valid for products bought direct from Abcam or one of our authorized distributors