


HRP Anti-Lamin B1 antibody [EPR8985(B)] - Nuclear Loading Control ab194109

KO 評価済 リコンビナント RabMAb

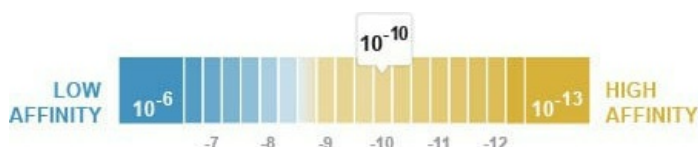
16 References 画像数 4

製品の概要

製品名	HRP Anti-Lamin B1 antibody [EPR8985(B)] - Nuclear Loading Control
製品の詳細	HRP Rabbit monoclonal [EPR8985(B)] to Lamin B1 - Nuclear Loading Control
由来種	Rabbit
標識	HRP
アプリケーション	適用あり: WB, IHC-P
種交差性	交差種: Human 交差が予測される動物種: Mouse, Rat 
免疫原	Synthetic peptide. This information is proprietary to Abcam and/or its suppliers.
ポジティブ・コントロール	WB: Jurkat, MOLT4, Y79, CaCo 2 whole cell lysates. IHC: Normal human colon tissue.
特記事項	This product is a recombinant monoclonal antibody, which offers several advantages including: <ul style="list-style-type: none"> - High batch-to-batch consistency and reproducibility - Improved sensitivity and specificity - Long-term security of supply - Animal-free production For more information see here . Our RabMAb [®] technology is a patented hybridoma-based technology for making rabbit monoclonal antibodies. For details on our patents, please refer to RabMAb[®] patents .

製品の特性

製品の状態	Liquid
保存方法	Shipped at 4°C. Store at +4°C short term (1-2 weeks). Upon delivery aliquot. Store at -20°C. Avoid freeze / thaw cycle. Store In the Dark.
解離定数 (K _D 値)	K _D = 1.95 x 10 ⁻¹⁰ M



[Learn more about K_D](#)

バッファー	pH: 7.40 Preservative: 0.1% Proclin 300 Solution Constituents: 30% Glycerol (glycerin, glycerine), 1% BSA, PBS
精製度	Protein A purified
ポリ/モノ	モノクローナル
クローン名	EPR8985(B)
アイソタイプ	IgG

アプリケーション

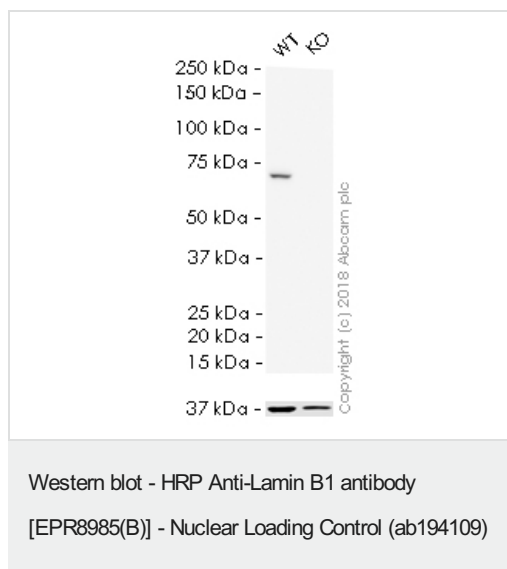
The Abpromise guarantee **Abpromise保証は、** 次のテスト済みアプリケーションにおけるab194109の使用に適用されます
アプリケーションノートには、推奨の開始希釈率がありますが、適切な希釈率につきましてはご検討ください。

アプリケーション	Abreviews	特記事項
WB		1/5000. Detects a band of approximately 70 kDa (predicted molecular weight: 66 kDa).
IHC-P		1/500. Perform heat mediated antigen retrieval with citrate buffer pH 6 before commencing with IHC staining protocol. ab199507 - Rabbit monoclonal IgG (HRP), is suitable for use as an isotype control with this antibody.

ターゲット情報

機能	Lamins are components of the nuclear lamina, a fibrous layer on the nucleoplasmic side of the inner nuclear membrane, which is thought to provide a framework for the nuclear envelope and may also interact with chromatin.
関連疾患	Defects in LMNB1 are the cause of leukodystrophy demyelinating autosomal dominant adult-onset (ADLD) [MIM:169500]. ADLD is a slowly progressive and fatal demyelinating leukodystrophy, presenting in the fourth or fifth decade of life. Clinically characterized by early autonomic abnormalities, pyramidal and cerebellar dysfunction, and symmetric demyelination of the CNS. It differs from multiple sclerosis and other demyelinating disorders in that neuropathology shows preservation of oligodendroglia in the presence of subtotal demyelination and lack of astrogliosis.
配列類似性	Belongs to the intermediate filament family.
翻訳後修飾	B-type lamins undergo a series of modifications, such as farnesylation and phosphorylation. Increased phosphorylation of the lamins occurs before envelope disintegration and probably plays a role in regulating lamin associations.
細胞内局在	Nucleus inner membrane.

画像



All lanes : HRP Anti-Lamin B1 antibody [EPR8985(B)] - Nuclear Loading Control (ab194109) at 1/5000 dilution

Lane 1 : Wild-type HAP1 whole cell lysate

Lane 2 : LMNB1 (Lamin B1) knockout HAP1 whole cell lysate

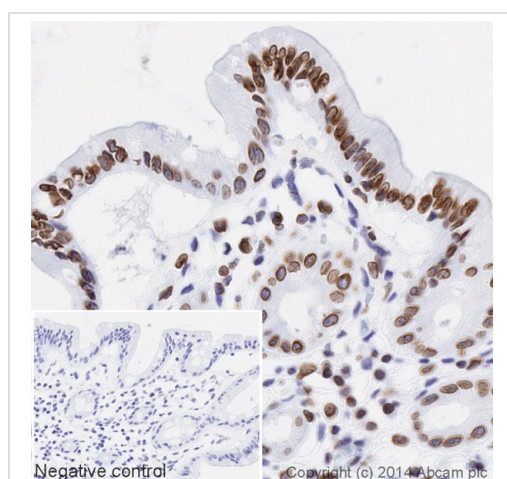
Lysates/proteins at 20 µg per lane.

Predicted band size: 66 kDa

Observed band size: 70 kDa

Exposure time: 3 minutes

ab194109 was shown to specifically react with Lamin B1 in wild-type HAP1 cells as signal was lost in LMNB1 (Lamin B1) knockout cells. Wild-type and LMNB1 (Lamin B1) knockout samples were subjected to SDS-PAGE. Ab194109 and **ab184095** (Mouse monoclonal [mAbcam 9484] to GAPDH - Loading Control (Alexa Fluor® 680) loading control) were incubated overnight at 4°C at 1/5000 dilution and 1/20000 dilution respectively. The loading control was imaged using the Licor Odyssey CLx prior to blots being developed with ECL technique.

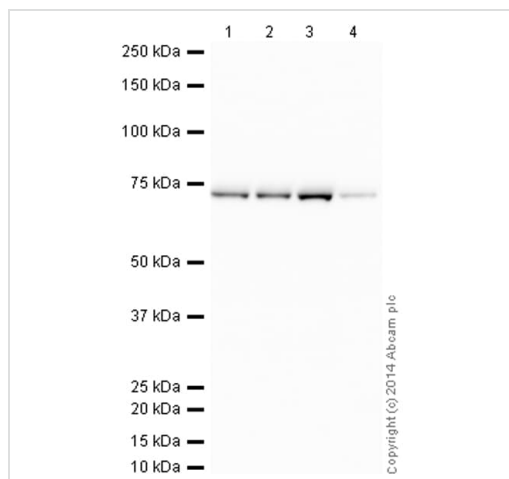


Immunohistochemistry (Formalin/PFA-fixed paraffin-embedded sections) - HRP Anti-Lamin B1 antibody [EPR8985(B)] - Nuclear Loading Control (ab194109)

IHC image of Lamin B1 staining in a section of formalin-fixed paraffin-embedded normal human colon tissue*, performed on a Leica BOND. The section was pre-treated using heat mediated antigen retrieval with sodium citrate buffer (pH6, epitope retrieval solution 1) for 20mins. The section was then incubated with ab194109 at 1/500 dilution, for 15 mins at room temperature. DAB was used as the chromogen. The section was then counterstained with haematoxylin and mounted with DPX. The inset negative control image is taken from an identical assay without primary antibody.

For other IHC staining systems (automated and non-automated) customers should optimize variable parameters such as antigen retrieval conditions, primary antibody concentration and antibody incubation times.

*Tissue obtained from the Human Research Tissue Bank, supported by the NIHR Cambridge Biomedical Research Centre



Western blot - HRP Anti-Lamin B1 antibody
[EPR8985(B)] - Nuclear Loading Control (ab194109)

All lanes : HRP Anti-Lamin B1 antibody [EPR8985(B)] - Nuclear Loading Control (ab194109) at 1/5000 dilution

Lane 1 : Jurkat (Human T cell lymphoblast-like cell line) Whole Cell Lysate

Lane 2 : MOLT4 (Human acute lymphoblastic leukemia cell line) Whole Cell Lysate

Lane 3 : Y79 (Human retinoblastoma cell line) Whole Cell Lysate

Lane 4 : Caco 2 (Human colonic carcinoma cell line) Whole Cell Lysate

Lysates/proteins at 10 µg per lane.

Developed using the ECL technique.

Performed under reducing conditions.

Predicted band size: 66 kDa

Observed band size: 70 kDa

Exposure time: 1 minute

This blot was produced using a 4-12% Bis-tris gel under the MOPS buffer system. The gel was run at 200V for 50 minutes before being transferred onto a Nitrocellulose membrane at 30V for 70 minutes. The membrane was then blocked for an hour using 3% milk before being incubated with ab194109 overnight at 4°C. Antibody binding was visualised using ECL development solution **ab133406**.

Why choose a recombinant antibody?



Research with confidence
Consistent and reproducible results



Long-term and scalable supply
Recombinant technology



Success from the first experiment
Confirmed specificity



Ethical standards compliant
Animal-free production

HRP Anti-Lamin B1 antibody [EPR8985(B)] -
Nuclear Loading Control (ab194109)

Please note: All products are "FOR RESEARCH USE ONLY. NOT FOR USE IN DIAGNOSTIC PROCEDURES"

Our Abpromise to you: Quality guaranteed and expert technical support

- Replacement or refund for products not performing as stated on the datasheet
- Valid for 12 months from date of delivery
- Response to your inquiry within 24 hours
- We provide support in Chinese, English, French, German, Japanese and Spanish
- Extensive multi-media technical resources to help you
- We investigate all quality concerns to ensure our products perform to the highest standards

If the product does not perform as described on this datasheet, we will offer a refund or replacement. For full details of the Abpromise, please visit <https://www.abcam.co.jp/abpromise> or contact our technical team.

Terms and conditions

- Guarantee only valid for products bought direct from Abcam or one of our authorized distributors