

### HRP Anti-IgE antibody [1A2] ab106493

面格新 1

医薬用外劇物

#### 製品の概要

製品名	HRP Anti-IgE antibody [1A2]
製品の詳細	HRP Mouse monoclonal [1A2] to IgE
由来種	Mouse
標識	HRP
特異性	ab106493 is specific for Human IgE. It reacts with IgE purified from blood but does not cross-react with Human anti-NP IgG1, IgG2, IgG3, IgG4, IgA and IgM
アプリケーション	<b>適用あり:</b> Sandwich ELISA
種交差性	<b>交差種:</b> Human <b>非交差種:</b> Mouse
免疫原	Mouse-Human chimeric anti-NP IgE
特記事項	<p>The Life Science industry has been in the grips of a reproducibility crisis for a number of years. Abcam is leading the way in addressing this with our range of recombinant monoclonal antibodies and knockout edited cell lines for gold-standard validation. Please check that this product meets your needs before purchasing.</p> <p>If you have any questions, special requirements or concerns, please send us an inquiry and/or contact our Support team ahead of purchase. Recommended alternatives for this product can be found below, along with publications, customer reviews and Q&amp;As</p>

#### 製品の特性

製品の状態	Liquid
保存方法	Shipped at 4°C. Store at +4°C.
バッファー	Preservative: 0.01% Thimerosal (merthiolate) Constituent: PBS
精製度	Protein A purified
ポリ/モノ	モノクローナル
クローン名	1A2
アイソタイプ	IgG1

## アプリケーション

**The Abpromise guarantee** Abpromise保証は、次のテスト済みアプリケーションにおけるab106493の使用に適用されます  
アプリケーションノートには、推奨の開始希釈率がありますが、適切な希釈率につきましてはご確認ください。

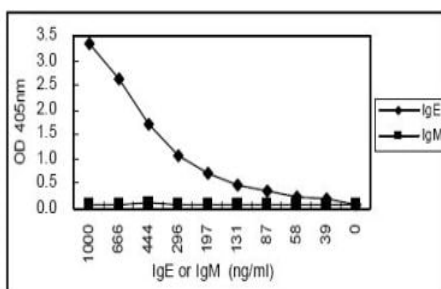
アプリケーション	Abreviews	特記事項
Sandwich ELISA		1/1000.

## ターゲット情報

**関連性** IgE is the class of antibodies produced in the lungs, skin, and mucous membranes. It may protect against parasite invasion, but it is a major factor in allergic reactions. The antigen-specific IgE interacts with mast cells and eosinophils, triggers the release of histamine, leukotrienes and other substances that lead to the itching, sneezing and congestion of allergies - and the life threatening respiratory distress of asthma and anaphylactic shock.

**細胞内局在** Cell Membrane

## 画像



Sandwich ELISA - HRP Anti-IgE antibody [1A2]  
(ab106493)

ab106493 at 1/1000 dilution detecting IgE by sandwich ELISA. The capture antibody is an alternative mouse monoclonal (IgG1) raised against Mouse-Human chimeric anti-NP IgE.

**Please note:** All products are "FOR RESEARCH USE ONLY. NOT FOR USE IN DIAGNOSTIC PROCEDURES"

## Our Abpromise to you: Quality guaranteed and expert technical support

- Replacement or refund for products not performing as stated on the datasheet
- Valid for 12 months from date of delivery
- Response to your inquiry within 24 hours
- We provide support in Chinese, English, French, German, Japanese and Spanish
- Extensive multi-media technical resources to help you
- We investigate all quality concerns to ensure our products perform to the highest standards

If the product does not perform as described on this datasheet, we will offer a refund or replacement. For full details of the Abpromise, please visit <https://www.abcam.co.jp/abpromise> or contact our technical team.

## Terms and conditions

---

- Guarantee only valid for products bought direct from Abcam or one of our authorized distributors