


HRP Anti-GDF15 antibody ab106260

画像数 1

製品の概要

製品名	HRP Anti-GDF15 antibody
製品の詳細	HRP Rabbit polyclonal to GDF15
由来種	Rabbit
標識	HRP
アプリケーション	適用あり: WB
種交差性	<p>交差種: Human</p> <p>交差が予測される動物種: Rat, Chimpanzee, Macaque monkey </p>
免疫原	Synthetic peptide conjugated to KLH, with a Cysteine residue linker corresponding C terminal residues of Human GDF15.
特記事項	<p>Do NOT add Sodium Azide!</p> <p>The Life Science industry has been in the grips of a reproducibility crisis for a number of years. Abcam is leading the way in addressing this with our range of recombinant monoclonal antibodies and knockout edited cell lines for gold-standard validation. Please check that this product meets your needs before purchasing.</p> <p>If you have any questions, special requirements or concerns, please send us an inquiry and/or contact our Support team ahead of purchase. Recommended alternatives for this product can be found below, along with publications, customer reviews and Q&As</p>

製品の特性

製品の状態	Liquid
保存方法	Shipped at 4°C. Store at +4°C.
バッファー	<p>Preservative: 0.01% Gentamicin sulphate</p> <p>Constituents: 1% BSA, 0.88% Sodium chloride, 0.42% Potassium phosphate</p>
精製度	Protein A purified
特記事項(精製)	ab106260 was affinity purified from monospecific antiserum by immunoaffinity chromatography.
ポリモノ	ポリクローナル
アイソタイプ	IgG

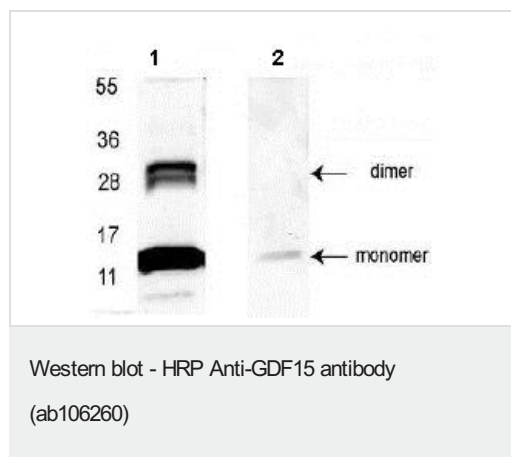
The Abpromise guarantee Abpromise保証は、 次のテスト済みアプリケーションにおけるab106260の使用に適用されます
アプリケーションノートには、推奨の開始希釈率がありますが、適切な希釈率につきましてはご検討ください。

アプリケーション	Abreviews	特記事項
WB		1/1000 - 1/5000. Detects a band of approximately 14, 28 kDa (predicted molecular weight: 34 kDa).

ターゲット情報

組織特異性	Highly expressed in placenta, with lower levels in prostate and colon and some expression in kidney.
配列類似性	Belongs to the TGF-beta family.
細胞内局在	Secreted.

画像



All lanes : HRP Anti-GDF15 antibody (ab106260) at 1/1000 dilution

Lane 1 : CHO cell lysate

Lane 2 : CHO cell lysate pre-incubated with immunizing peptide

Predicted band size: 34 kDa

4-20% gradient gel.

Please note: All products are "FOR RESEARCH USE ONLY. NOT FOR USE IN DIAGNOSTIC PROCEDURES"

Our Abpromise to you: Quality guaranteed and expert technical support

- Replacement or refund for products not performing as stated on the datasheet
- Valid for 12 months from date of delivery
- Response to your inquiry within 24 hours
- We provide support in Chinese, English, French, German, Japanese and Spanish
- Extensive multi-media technical resources to help you
- We investigate all quality concerns to ensure our products perform to the highest standards

If the product does not perform as described on this datasheet, we will offer a refund or replacement. For full details of the Abpromise, please visit <https://www.abcam.co.jp/abpromise> or contact our technical team.

Terms and conditions

- Guarantee only valid for products bought direct from Abcam or one of our authorized distributors