


### HRP Anti-ERG antibody [EPR3864] ab195514

リコンビナント RabMAb<sup>®</sup>

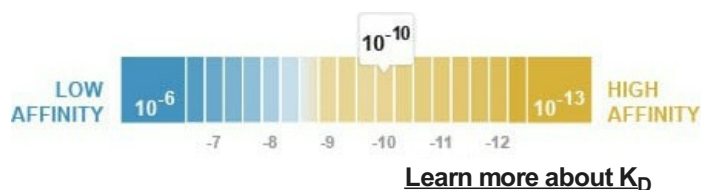
#### 1 References 画像数 2

#### 製品の概要

|              |  |
|--------------|--|
| 製品名          | HRP Anti-ERG antibody [EPR3864]  |
| 製品の詳細        | HRP Rabbit monoclonal [EPR3864] to ERG   |
| 由来種          | Rabbit   |
| 標識           | HRP  |
| アプリケーション     | 適用あり: WB   |
| 種交差性         | 交差種: Human<br>交差が予測される動物種: Mouse, Rat   |
| 免疫原          | Synthetic peptide. This information is proprietary to Abcam and/or its suppliers.  |
| ポジティブ・コントロール | WB: Jurkat whole cell lysate.  |
| 特記事項         | This product is a recombinant monoclonal antibody, which offers several advantages including: <ul style="list-style-type: none"> <li>- High batch-to-batch consistency and reproducibility</li> <li>- Improved sensitivity and specificity</li> <li>- Long-term security of supply</li> <li>- Animal-free production</li> </ul> For more information <a href="#">see here</a> .<br>Our RabMAb <sup>®</sup> technology is a patented hybridoma-based technology for making rabbit monoclonal antibodies. For details on our patents, please refer to <a href="#">RabMAb<sup>®</sup> patents</a> . |

#### 製品の特性

|                         |  |
|-------------------------|--|
| 製品の状態                   | Liquid   |
| 保存方法                    | Shipped at 4°C. Store at +4°C short term (1-2 weeks). Upon delivery aliquot. Store at -20°C. Avoid freeze / thaw cycle. Store in the Dark. |
| 解離定数 (K <sub>D</sub> 値) | K <sub>D</sub> = 8.90 x 10 <sup>-10</sup> M  |



|        |  |
|--------|--|
| バッファー  | pH: 7.40<br>Preservative: 0.1% Proclin 300 Solution<br>Constituents: PBS, 1% BSA, 30% Glycerol (glycerin, glycerine) |
| 精製度    | Protein A purified   |
| ポリ/モノ  | モノクローナル  |
| クローン名  | EPR3864  |
| アイソタイプ | IgG  |

## アプリケーション

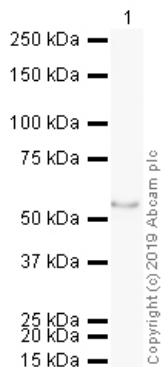
**The Abpromise guarantee**      **Abpromise保証は、次のテスト済みアプリケーションにおけるab195514の使用に適用されます**  
アプリケーションノートには、推奨の開始希釈率がありますが、適切な希釈率につきましてはご検討ください。

| アプリケーション | Abreviews | 特記事項   |
|----------|-----------|--|
| WB       |           | 1/2000. Detects a band of approximately 55 kDa (predicted molecular weight: 55 kDa). |

## ターゲット情報

|       |  |
|-------|--|
| 機能    | Transcriptional regulator. May participate in transcriptional regulation through the recruitment of SETDB1 histone methyltransferase and subsequent modification of local chromatin structure.   |
| 関連疾患  | Defects in ERG are a cause of Ewing sarcoma (ES) [MIM:612219]. A highly malignant, metastatic, primitive small round cell tumor of bone and soft tissue that affects children and adolescents. It belongs to the Ewing sarcoma family of tumors, a group of morphologically heterogeneous neoplasms that share the same cytogenetic features. They are considered neural tumors derived from cells of the neural crest. Ewing sarcoma represents the less differentiated form of the tumors. Note=A chromosomal aberration involving ERG is found in patients with Erwing sarcoma. Translocation t(21;22)(q22;q12) with EWSR1.<br>Note=Chromosomal aberrations involving ERG have been found in acute myeloid leukemia (AML). Translocation t(16;21)(p11;q22) with FUS. Translocation t(X;21)(q25-26;q22) with ELF4. |
| 配列類似性 | Belongs to the ETS family.<br>Contains 1 ETS DNA-binding domain.<br>Contains 1 PNT (pointed) domain.   |
| 細胞内局在 | Nucleus. Cytoplasm. Localized in cytoplasmic mRNP granules containing untranslated mRNAs.  |

## 画像



Western blot - HRP Anti-ERG antibody [EPR3864]  
(ab195514)

HRP Anti-ERG antibody [EPR3864] (ab195514) at 1/1000 dilution  
+ Jurkat (Human T cell lymphoblast-like cell line) Whole Cell Lysate  
at 20 µg

Developed using the ECL technique.

Performed under reducing conditions.

**Predicted band size:** 55 kDa

**Exposure time:** 20 minutes

This blot was produced using a 4-12% Bis-tris gel under the MOPS buffer system. The gel was run at 200V for 50 minutes before being transferred onto a Nitrocellulose membrane at 30V for 70 minutes. The membrane was then blocked for an hour using 3% milk before being incubated with ab195514 overnight at 4°C. Antibody binding was visualised using ECL development solution [ab133406](#).

### Why choose a recombinant antibody?



**Research with confidence**  
Consistent and reproducible results



**Long-term and scalable supply**  
Recombinant technology



**Success from the first experiment**  
Confirmed specificity



**Ethical standards compliant**  
Animal-free production

HRP Anti-ERG antibody [EPR3864] (ab195514)

**Please note:** All products are "FOR RESEARCH USE ONLY. NOT FOR USE IN DIAGNOSTIC PROCEDURES"

### **Our Abpromise to you: Quality guaranteed and expert technical support**

---

- Replacement or refund for products not performing as stated on the datasheet
- Valid for 12 months from date of delivery
- Response to your inquiry within 24 hours
  
- We provide support in Chinese, English, French, German, Japanese and Spanish
- Extensive multi-media technical resources to help you
- We investigate all quality concerns to ensure our products perform to the highest standards

If the product does not perform as described on this datasheet, we will offer a refund or replacement. For full details of the Abpromise, please visit <https://www.abcam.co.jp/abpromise> or contact our technical team.

### **Terms and conditions**

---

- Guarantee only valid for products bought direct from Abcam or one of our authorized distributors