


HRP Anti-Cytochrome C antibody [7H8.2C12] ab199222

画像数 2

製品の概要

| | |
|--------------|---|
| 製品名 | HRP Anti-Cytochrome C antibody [7H8.2C12] |
| 製品の詳細 | HRP Mouse monoclonal [7H8.2C12] to Cytochrome C |
| 由来種 | Mouse |
| 標識 | HRP |
| アプリケーション | 適用あり: IHC-P, WB |
| 種交差性 | 交差種: Human 交差が予測される動物種: Mouse, Rat, Horse, Pigeon, Drosophila melanogaster  |
| エピトープ | The antibody recognizes an epitope within amino acids 93-104 of pigeon Cytochrome C, based on competitive ELISA results. |
| ポジティブ・コントロール | WB: normal human heart tissue lysate. IHC: normal human colon tissue. |
| 特記事項 | <p>The Life Science industry has been in the grips of a reproducibility crisis for a number of years. Abcam is leading the way in addressing this with our range of recombinant monoclonal antibodies and knockout edited cell lines for gold-standard validation. Please check that this product meets your needs before purchasing.</p> <p>If you have any questions, special requirements or concerns, please send us an inquiry and/or contact our Support team ahead of purchase. Recommended alternatives for this product can be found below, along with publications, customer reviews and Q&As</p> |

製品の特性

| | |
|--------|---|
| 製品の状態 | Liquid |
| 保存方法 | Shipped at 4°C. Store at +4°C short term (1-2 weeks). Upon delivery aliquot. Store at -20°C or -80°C. Avoid freeze / thaw cycle. Store In the Dark. |
| バッファー | pH: 7.40 Preservative: 0.1% Proclin 300 Solution Constituents: PBS, 1% BSA, 30% Glycerol (glycerin, glycerine) |
| 精製度 | IgG fraction |
| ポリ/モノ | モノクローナル |
| クローン名 | 7H8.2C12 |
| アイソタイプ | IgG |

アプリケーション

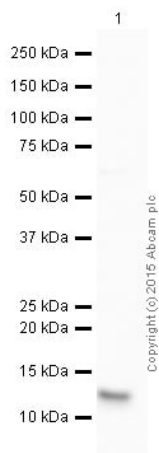
The Abpromise guarantee **Abpromise保証は、次のテスト済みアプリケーションにおけるab199222の使用に適用されます**
アプリケーションノートには、推奨の開始希釈率がありますが、適切な希釈率につきましてはご検討ください。

| アプリケーション | Abreviews | 特記事項 |
|----------|-----------|---|
| IHC-P | | 1/100. Perform heat mediated antigen retrieval with citrate buffer pH 6 before commencing with IHC staining protocol. |
| WB | | 1/5000. Detects a band of approximately 12 kDa (predicted molecular weight: 12 kDa). |

ターゲット情報

| | |
|-------|--|
| 機能 | <p>Electron carrier protein. The oxidized form of the cytochrome c heme group can accept an electron from the heme group of the cytochrome c1 subunit of cytochrome reductase. Cytochrome c then transfers this electron to the cytochrome oxidase complex, the final protein carrier in the mitochondrial electron-transport chain.</p> <p>Plays a role in apoptosis. Suppression of the anti-apoptotic members or activation of the pro-apoptotic members of the Bcl-2 family leads to altered mitochondrial membrane permeability resulting in release of cytochrome c into the cytosol. Binding of cytochrome c to Apaf-1 triggers the activation of caspase-9, which then accelerates apoptosis by activating other caspases.</p> |
| 関連疾患 | <p>Defects in CYCS are the cause of thrombocytopenia type 4 (THC4) [MIM:612004]; also known as autosomal dominant thrombocytopenia type 4. Thrombocytopenia is the presence of relatively few platelets in blood. THC4 is a non-syndromic form of thrombocytopenia. Clinical manifestations of thrombocytopenia are absent or mild. THC4 may be caused by dysregulated platelet formation.</p> |
| 配列類似性 | <p>Belongs to the cytochrome c family.</p> |
| 翻訳後修飾 | <p>Binds 1 heme group per subunit.</p> |
| 細胞内局在 | <p>Mitochondrion matrix.</p> |

画像



Western blot - HRP Anti-Cytochrome C antibody [7H8.2C12] (ab199222)

HRP Anti-Cytochrome C antibody [7H8.2C12] (ab199222) at 1/5000 dilution + Heart (Human) Tissue Lysate - adult normal tissue at 10 µg

Developed using the ECL technique.

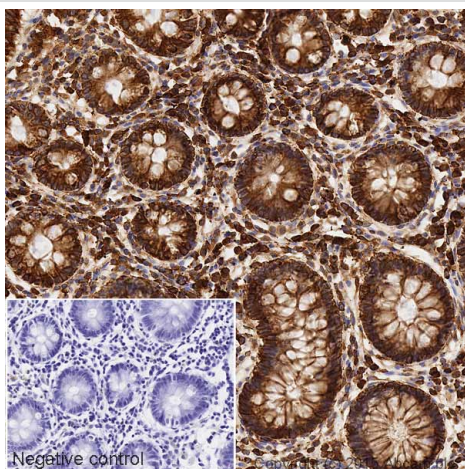
Performed under reducing conditions.

Predicted band size: 12 kDa

Observed band size: 12 kDa

Exposure time: 1 minute

This blot was produced using a 4-12% Bis-tris gel under the MES buffer system. The gel was run at 200V for 35 minutes before being transferred onto a Nitrocellulose membrane at 30V for 70 minutes. The membrane was then blocked for an hour using 3% milk before being incubated with ab199222 overnight at 4°C. Antibody binding was visualised using ECL development solution [ab133406](#).



Immunohistochemistry (Formalin/PFA-fixed paraffin-embedded sections) - HRP Anti-Cytochrome C antibody [7H8.2C12] (ab199222)

IHC image of Cytochrome C staining in a section of formalin-fixed paraffin-embedded normal human colon*, performed on a Leica BOND. The section was pre-treated using heat mediated antigen retrieval with sodium citrate buffer (pH6, epitope retrieval solution 1) for 20mins. The section was then incubated with ab199222 at 1/100 dilution for 15 mins at room temperature. DAB was used as the chromogen. The section was then counterstained with haematoxylin and mounted with DPX. The inset negative control image is taken from an identical assay without primary antibody.

For other IHC staining systems (automated and non-automated) customers should optimize variable parameters such as antigen retrieval conditions, primary antibody concentration and antibody incubation times.

*Tissue obtained from the Human Research Tissue Bank, supported by the NIHR Cambridge Biomedical Research Centre

Please note: All products are "FOR RESEARCH USE ONLY. NOT FOR USE IN DIAGNOSTIC PROCEDURES"

Our Abpromise to you: Quality guaranteed and expert technical support

- Replacement or refund for products not performing as stated on the datasheet

- Valid for 12 months from date of delivery
- Response to your inquiry within 24 hours

- We provide support in Chinese, English, French, German, Japanese and Spanish
- Extensive multi-media technical resources to help you
- We investigate all quality concerns to ensure our products perform to the highest standards

If the product does not perform as described on this datasheet, we will offer a refund or replacement. For full details of the Abpromise, please visit <https://www.abcam.co.jp/abpromise> or contact our technical team.

Terms and conditions

- Guarantee only valid for products bought direct from Abcam or one of our authorized distributors