

HRP Anti-Cripto1/CRIPTO antibody [EPNCIR106A] ab203468

リコンビナント **RabMAb**

画像数 2

製品の概要

製品名	HRP Anti-Cripto1/CRIPTO antibody [EPNCIR106A]
製品の詳細	HRP Rabbit monoclonal [EPNCIR106A] to Cripto1/CRIPTO
由来種	Rabbit
標識	HRP
アプリケーション	適用あり: WB
種交差性	交差種: Human
免疫原	Synthetic peptide. This information is proprietary to Abcam and/or its suppliers.
ポジティブ・コントロール	WB: NCCIT whole cell lysate
特記事項	<p>This antibody was developed as part of a collaboration between Epitomics, the National Cancer Institute's Center for Cancer Research and the lab of David Solomon. <u>View antibodies from NCI Center for Cancer Research Collaboration.</u></p> <p>Our RabMAb[®] technology is a patented hybridoma-based technology for making rabbit monoclonal antibodies. For details on our patents, please refer to <u>RabMAb[®] patents.</u></p>

製品の特性

製品の状態	Liquid
保存方法	Shipped at 4°C. Store at +4°C short term (1-2 weeks). Upon delivery aliquot. Store at -20°C. Stable for 12 months at -20°C. Store In the Dark.
バッファー	<p>pH: 7.40</p> <p>Preservative: 0.1% Proclin 300 Solution</p> <p>Constituents: 30% Glycerol (glycerin, glycerine), 1% BSA, PBS</p>
精製度	Protein A purified
ポリ/モノ	モノクローナル
クローン名	EPNCIR106A
アイソタイプ	IgG

アプリケーション

The Abpromise guarantee

Abpromise保証は、次のテスト済みアプリケーションにおけるab203468の使用に適用されます

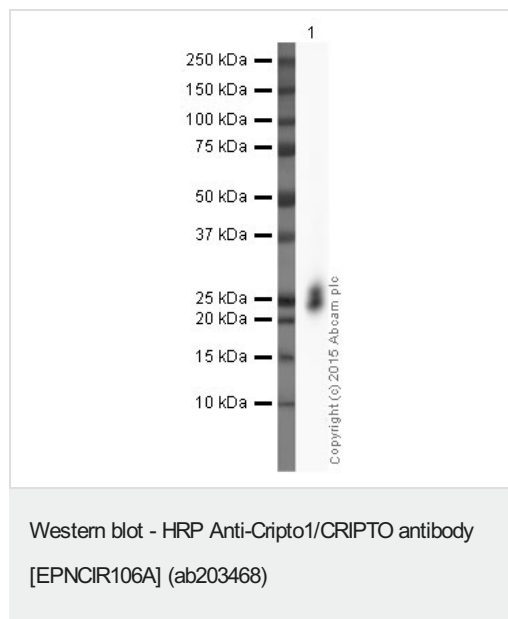
アプリケーションノートには、推奨の開始希釈率がありますが、適切な希釈率につきましてはご確認ください。

アプリケーション	Abreviews	特記事項
WB		1/5000. Detects a band of approximately 24 kDa (predicted molecular weight: 21 kDa).

ターゲット情報

機能	Could play a role in the determination of the epiblastic cells that subsequently give rise to the mesoderm.
組織特異性	Preferentially expressed in gastric and colorectal carcinomas than in their normal counterparts.
配列類似性	Contains 1 EGF-like domain.
細胞内局在	Cell membrane.

画像



HRP Anti-Cripto1/CRIPTO antibody [EPNCIR106A] (ab203468) at 1/5000 dilution + NCCIT (Human embryonic teratocarcinoma cell line) Whole Cell Lysate at 10 µg

Developed using the ECL technique.

Performed under reducing conditions.

Predicted band size: 21 kDa

Observed band size: 24 kDa

Exposure time: 12 minutes

This blot was produced using a 4-12% Bis-tris gel under the MES buffer system. The gel was run at 200V for 35 minutes before being transferred onto a Nitrocellulose membrane at 30V for 70 minutes. The membrane was then blocked for an hour using 3% milk before being incubated with ab203468 overnight at 4°C. Antibody binding was visualised using ECL development solution [ab133406](#).

Why choose a recombinant antibody?



Research with confidence
Consistent and reproducible results



Long-term and scalable supply
Recombinant technology



Success from the first experiment
Confirmed specificity



Ethical standards compliant
Animal-free production

HRP Anti-Cripto1/CRIPTO antibody [EPNCIR106A]
(ab203468)

Please note: All products are "FOR RESEARCH USE ONLY. NOT FOR USE IN DIAGNOSTIC PROCEDURES"

Our Abpromise to you: Quality guaranteed and expert technical support

- Replacement or refund for products not performing as stated on the datasheet
- Valid for 12 months from date of delivery
- Response to your inquiry within 24 hours
- We provide support in Chinese, English, French, German, Japanese and Spanish
- Extensive multi-media technical resources to help you
- We investigate all quality concerns to ensure our products perform to the highest standards

If the product does not perform as described on this datasheet, we will offer a refund or replacement. For full details of the Abpromise, please visit <https://www.abcam.co.jp/abpromise> or contact our technical team.

Terms and conditions

- Guarantee only valid for products bought direct from Abcam or one of our authorized distributors