


HRP Anti-ACADM/MCAD antibody [EPR3708] ab203465

リコンビナント RabMAb[®]

画像数 3

製品の概要

製品名	HRP Anti-ACADM/MCAD antibody [EPR3708]
製品の詳細	HRP Rabbit monoclonal [EPR3708] to ACADM/MCAD
由来種	Rabbit
標識	HRP
アプリケーション	適用あり: WB, IHC-P
種交差性	交差種: Human 交差が予測される動物種: Mouse, Rat 
免疫原	Synthetic peptide. This information is proprietary to Abcam and/or its suppliers.
ポジティブ・コントロール	WB: Human heart and human fetal liver tissue lysates; HeLa, HepG2 and K562 whole cell lysates. IHC-P: FFPE Human normal kidney tissue.
特記事項	<p>This product is a recombinant monoclonal antibody, which offers several advantages including:</p> <ul style="list-style-type: none">- High batch-to-batch consistency and reproducibility- Improved sensitivity and specificity- Long-term security of supply- Animal-free production <p>For more information see here.</p> <p>Our RabMAb[®] technology is a patented hybridoma-based technology for making rabbit monoclonal antibodies. For details on our patents, please refer to RabMAb[®] patents.</p>

製品の特性

製品の状態	Liquid
保存方法	Shipped at 4°C. Store at +4°C short term (1-2 weeks). Upon delivery aliquot. Store at -20°C. Stable for 12 months at -20°C. Store In the Dark.
バッファー	pH: 7.40 Preservative: 0.1% Proclin 300 Solution Constituents: PBS, 30% Glycerol (glycerin, glycerine), 1% BSA
精製度	Protein A purified
ポリ/モノ	モノクローナル

クローン名 EPR3708
アイソタイプ IgG

アプリケーション

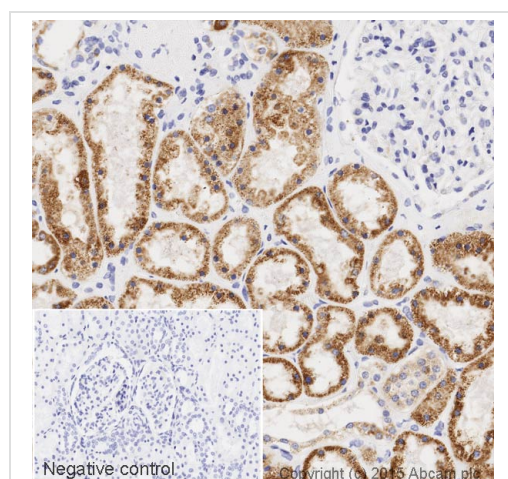
The Abpromise guarantee **Abpromise保証は、** 次のテスト済みアプリケーションにおけるab203465の使用に適用されます
アプリケーションノートには、推奨の開始希釈率がありますが、適切な希釈率につきましてはご検討ください。

アプリケーション	Abreviews	特記事項
WB		1/5000. Detects a band of approximately 47 kDa (predicted molecular weight: 47 kDa).
IHC-P		1/100. Perform heat mediated antigen retrieval with citrate buffer pH 6 before commencing with IHC staining protocol.

ターゲット情報

機能 This enzyme is specific for acyl chain lengths of 4 to 16.
パスウェイ Lipid metabolism; mitochondrial fatty acid beta-oxidation.
関連疾患 Defects in ACADM are the cause of acyl-CoA dehydrogenase medium-chain deficiency (ACADM) [MIM:201450]. It is an autosomal recessive disease which causes fasting hypoglycemia, hepatic dysfunction, and encephalopathy, often resulting in death in infancy.
配列類似性 Belongs to the acyl-CoA dehydrogenase family.
細胞内局在 Mitochondrion matrix.

画像

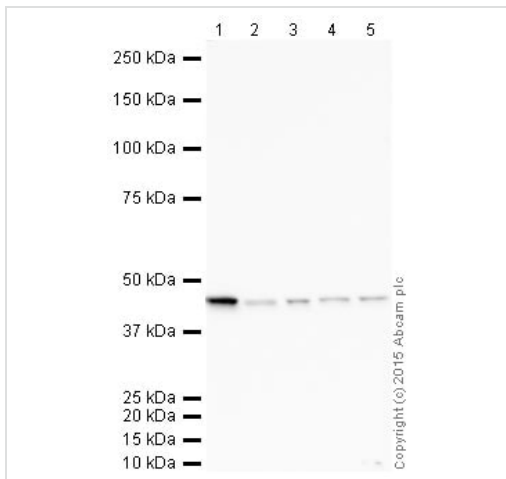


Immunohistochemistry (Formalin/PFA-fixed paraffin-embedded sections) - HRP Anti-ACADM/MCAD antibody [EPR3708] (ab203465)

IHC image of ACADM/MCAD staining in a section of formalin-fixed paraffin-embedded human normal kidney*, performed on a Leica BOND™. The section was pre-treated using heat mediated antigen retrieval with sodium citrate buffer (pH6, epitope retrieval solution 1) for 20mins. The section was then incubated with ab203465, 1/100 dilution, for 15 mins at room temperature. DAB was used as the chromogen. The section was then counterstained with haematoxylin and mounted with DPX. The inset negative control image is taken from an identical assay without primary antibody.

For other IHC staining systems (automated and non-automated) customers should optimize variable parameters such as antigen retrieval conditions, primary antibody concentration and antibody incubation times.

*Tissue obtained from the Human Research Tissue Bank, supported by the NIHR Cambridge Biomedical Research Centre



Western blot - HRP Anti-ACADM/MCAD antibody [EPR3708] (ab203465)

All lanes : HRP Anti-ACADM/MCAD antibody [EPR3708] (ab203465) at 1/5000 dilution

Lane 1 : Heart (Human) Tissue Lysate - adult normal tissue

Lane 2 : Liver (Human) Tissue Lysate - fetal normal tissue

Lane 3 : HeLa (Human epithelial carcinoma cell line) Whole Cell Lysate

Lane 4 : HepG2 (Human hepatocellular liver carcinoma cell line) Whole Cell Lysate

Lane 5 : K562 (Human erythromyeloblastoid leukemia cell line) Whole Cell Lysate

Lysates/proteins at 10 µg per lane.

Developed using the ECL technique.

Performed under reducing conditions.

Predicted band size: 47 kDa

Observed band size: 47 kDa

Exposure time: 4 minutes

This blot was produced using a 4-12% Bis-tris gel under the MOPS buffer system. The gel was run at 200V for 50 minutes before being transferred onto a Nitrocellulose membrane at 30V for 70 minutes. The membrane was then blocked for an hour using 3% milk before being incubated with ab203465 overnight at 4°C. Antibody binding was visualised using ECL development solution **ab133406**.

Why choose a recombinant antibody?



Research with confidence
Consistent and reproducible results



Long-term and scalable supply
Recombinant technology



Success from the first experiment
Confirmed specificity



Ethical standards compliant
Animal-free production

HRP Anti-ACADM/MCAD antibody [EPR3708]
(ab203465)

Please note: All products are "FOR RESEARCH USE ONLY. NOT FOR USE IN DIAGNOSTIC PROCEDURES"

Our Abpromise to you: Quality guaranteed and expert technical support

- Replacement or refund for products not performing as stated on the datasheet
- Valid for 12 months from date of delivery
- Response to your inquiry within 24 hours
- We provide support in Chinese, English, French, German, Japanese and Spanish
- Extensive multi-media technical resources to help you
- We investigate all quality concerns to ensure our products perform to the highest standards

If the product does not perform as described on this datasheet, we will offer a refund or replacement. For full details of the Abpromise, please visit <https://www.abcam.co.jp/abpromise> or contact our technical team.

Terms and conditions

- Guarantee only valid for products bought direct from Abcam or one of our authorized distributors