




Anti-HOPX/HOD antibody ab106251

★★★★★ 5 Abreviews 1 References 画像数 1

医薬用外毒物

製品の概要

製品名	Anti-HOPX/HOD antibody
製品の詳細	Rabbit polyclonal to HOPX/HOD
由来種	Rabbit
アプリケーション	適用あり: WB
種交差性	交差種: Human 交差が予測される動物種: Mouse, Rat, Cow, Pig 
免疫原	Recombinant full length protein corresponding to Human HOPX/HOD aa 1-73. (BC014225) Sequence: MSAETASGPTEDQVEILEYNFNKVDKHPDSTTLCLIAAEAGL SEEETQKW FKQLAKWRRSEGLPSECRSVTD  Run BLAST with  Run BLAST with
ポジティブ・コントロール	Human fetal heart tissue lysate.
特記事項	The Life Science industry has been in the grips of a reproducibility crisis for a number of years. Abcam is leading the way in addressing this with our range of recombinant monoclonal antibodies and knockout edited cell lines for gold-standard validation. Please check that this product meets your needs before purchasing. If you have any questions, special requirements or concerns, please send us an inquiry and/or contact our Support team ahead of purchase. Recommended alternatives for this product can be found below, along with publications, customer reviews and Q&As

製品の特性

製品の状態	Lyophilized:Reconstitute with 200ul distilled sterile water. Please note that if you receive this product in liquid form it has already been reconstituted as described and no further reconstitution is necessary.
保存方法	Shipped at 4°C. Upon delivery aliquot and store at -20°C. Avoid freeze / thaw cycles.
バッファー	pH: 7.20 Preservative: 0.02% Sodium azide Constituents: 0.184% Tris glycine, 1% BSA
精製度	Protein A purified

ポリモノ	ポリクローナル
アイソタイプ	IgG

アプリケーション

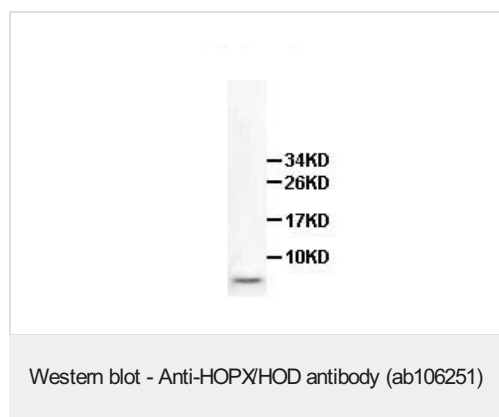
The Abpromise guarantee **Abpromise保証は、次のテスト済みアプリケーションにおけるab106251の使用に適用されます**
 アプリケーションノートには、推奨の開始希釈率がありますが、適切な希釈率につきましてはご検討ください。

アプリケーション	Abreviews	特記事項
WB		1/500 - 1/1000. Detects a band of approximately 8 kDa (predicted molecular weight: 8 kDa).

ターゲット情報

機能	Atypical homeodomain protein which does not bind DNA and is required to modulate cardiac growth and development. Acts via its interaction with SRF, thereby modulating the expression of SRF-dependent cardiac-specific genes and cardiac development. Prevents SRF-dependent transcription either by inhibiting SRF binding to DNA or by recruiting histone deacetylase (HDAC) proteins that prevent transcription by SRF. Overexpression causes cardiac hypertrophy (By similarity). May act as a tumor suppressor.
組織特異性	Widely expressed. Expressed in the heart, brain, placenta, lung, skeletal and smooth muscles, uterus, urinary bladder, kidney and spleen. Down-regulated in some types of cancer such as lung cancer, choriocarcinoma, head and neck squamous cell carcinoma and oral squamous cell carcinoma.
配列類似性	Contains 1 homeobox DNA-binding domain.
細胞内局在	Nucleus.
製品の状態	There are 2 isoforms produced by alternative splicing.

画像



Anti-HOPX/HOD antibody (ab106251) at 1/500 dilution + Human fetal heart tissue lysate

Predicted band size: 8 kDa

Please note: All products are "FOR RESEARCH USE ONLY. NOT FOR USE IN DIAGNOSTIC PROCEDURES"

Our Abpromise to you: Quality guaranteed and expert technical support

- Replacement or refund for products not performing as stated on the datasheet
- Valid for 12 months from date of delivery
- Response to your inquiry within 24 hours

- We provide support in Chinese, English, French, German, Japanese and Spanish
- Extensive multi-media technical resources to help you
- We investigate all quality concerns to ensure our products perform to the highest standards

If the product does not perform as described on this datasheet, we will offer a refund or replacement. For full details of the Abpromise, please visit <https://www.abcam.co.jp/abpromise> or contact our technical team.

Terms and conditions

- Guarantee only valid for products bought direct from Abcam or one of our authorized distributors