

Anti-HMW Cytokeratin antibody [34bE12] ab776

2 References [画像数 2](#)

製品の概要

製品名	Anti-HMW Cytokeratin antibody [34bE12]
製品の詳細	Mouse monoclonal [34bE12] to HMW Cytokeratin
由来種	Mouse
アプリケーション	適用あり: IHC-P
種交差性	交差種: Human
免疫原	Tissue, cells or virus corresponding to Human HMW Cytokeratin. Solubilized keratin extract from human stratum corneum.
特記事項	<p>The Life Science industry has been in the grips of a reproducibility crisis for a number of years. Abcam is leading the way in addressing this with our range of recombinant monoclonal antibodies and knockout edited cell lines for gold-standard validation. Please check that this product meets your needs before purchasing.</p> <p>If you have any questions, special requirements or concerns, please send us an inquiry and/or contact our Support team ahead of purchase. Recommended alternatives for this product can be found below, along with publications, customer reviews and Q&As</p>

製品の特性

製品の状態	Liquid
保存方法	Shipped at 4°C. Store at +4°C short term (1-2 weeks). Store at -20°C or -80°C. Avoid freeze / thaw cycle.
バッファー	<p>pH: 7.3</p> <p>Preservative: 0.05% Sodium azide</p> <p>Constituents: Tissue culture supernatant, 1% BSA</p>
精製度	Tissue culture supernatant
ポリ/モノ	モノクローナル
クローン名	34bE12
アイソタイプ	IgG1
軽鎖の種類	kappa

アプリケーション

The Abpromise guarantee **Abpromise保証は、**次のテスト済みアプリケーションにおけるab776の使用に適用されます
 アプリケーションノートには、推奨の開始希釈率がありますが、適切な希釈率につきましてはご検討ください。

アプリケーション	Abreviews	特記事項
IHC-P		1/25 - 1/50. Staining Protocol: We suggest an incubation period of 30 minutes at room temperature. However, depending upon the fixation conditions and the staining system employed, optimal incubation conditions and antibody dilutions should be determined by the user. Enzymatic antigen retrieval of paraffin embedded tissues is recommended prior to immunostaining.

ターゲット情報

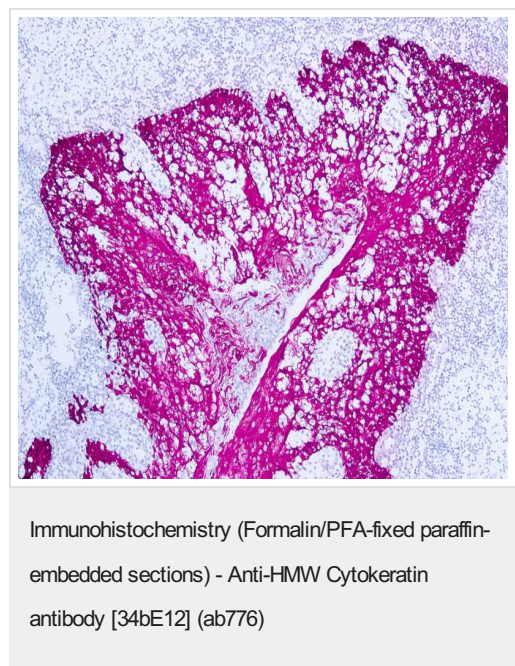
関連性

Cytokeratins are intermediate filament keratins found in the intracytoplasmic cytoskeleton of epithelial tissue. There are two types of Cytokeratins: the low weight, acidic type I cytokeratins and the high weight, basic or neutral type II. Cytokeratins are usually found in pairs comprising a type I Cytokeratin and a type II cytokeratin. The high molecular weight cytokeratins, which are the basic or neutral cytokeratins, comprise subtypes CK1 (67), CK2 (65.5), CK3 (64), CK4 (59), CK5 (58), CK6 (56), CK7 (54), CK8 (52.5) and CK9. The low molecular weight cytokeratins, which are the acidic cytokeratins, comprise subtypes CK10 (56.5), CK12 (56), CK13 (53), CK14 (50), CK16(48), CK17 (46), CK18 (45), CK19(48) and CK20(46).

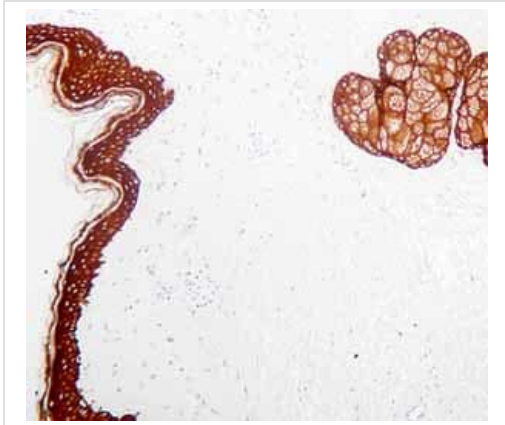
細胞内局在

Cytoplasmic

画像



Formalin fixed paraffin embedded human prostate tissue, staining HMW Cytokeratin with ab776 in immunohistochemical analysis



ab776 staining human skin tissue sections by IHC-P.

Immunohistochemistry (Formalin/PFA-fixed paraffin-embedded sections) - Anti-HMW Cytokeratin antibody [34bE12] (ab776)

Please note: All products are "FOR RESEARCH USE ONLY. NOT FOR USE IN DIAGNOSTIC PROCEDURES"

Our Abpromise to you: Quality guaranteed and expert technical support

- Replacement or refund for products not performing as stated on the datasheet
- Valid for 12 months from date of delivery
- Response to your inquiry within 24 hours
- We provide support in Chinese, English, French, German, Japanese and Spanish
- Extensive multi-media technical resources to help you
- We investigate all quality concerns to ensure our products perform to the highest standards

If the product does not perform as described on this datasheet, we will offer a refund or replacement. For full details of the Abpromise, please visit <https://www.abcam.co.jp/abpromise> or contact our technical team.

Terms and conditions

- Guarantee only valid for products bought direct from Abcam or one of our authorized distributors