




Anti-HMGB2 antibody ab67282

★★★★☆ **4 Abreviews** **30 References** 画像数 4

製品の概要

製品名	Anti-HMGB2 antibody
製品の詳細	Rabbit polyclonal to HMGB2
由来種	Rabbit
アプリケーション	適用あり: ICC, WB, IP
種交差性	交差種: Mouse, Rat, Human 交差が予測される動物種: Horse, Cow, Dog, Pig, Chimpanzee, Cynomolgus monkey, Rhesus monkey, Opossum 
免疫原	Synthetic peptide: KGKSEAGKKGPGRPTGS conjugated to KLH, corresponding to amino acids 165-181 of Human HMGB2 <div>  Run BLAST with  Run BLAST with </div>
ポジティブ・コントロール	WB: HEK-293T cell lysate.
特記事項	<p>The Life Science industry has been in the grips of a reproducibility crisis for a number of years. Abcam is leading the way in addressing this with our range of recombinant monoclonal antibodies and knockout edited cell lines for gold-standard validation. Please check that this product meets your needs before purchasing.</p> <p>If you have any questions, special requirements or concerns, please send us an inquiry and/or contact our Support team ahead of purchase. Recommended alternatives for this product can be found below, along with publications, customer reviews and Q&As</p>

製品の特性

製品の状態	Liquid
保存方法	Shipped at 4°C. Store at +4°C short term (1-2 weeks). Upon delivery aliquot. Store at -20°C. Avoid freeze / thaw cycle.
バッファー	pH: 7.40 Preservative: 0.097% Sodium azide Constituent: 0.0268% PBS
精製度	Immunogen affinity purified
ポリ/モノ	ポリクローナル

アプリケーション

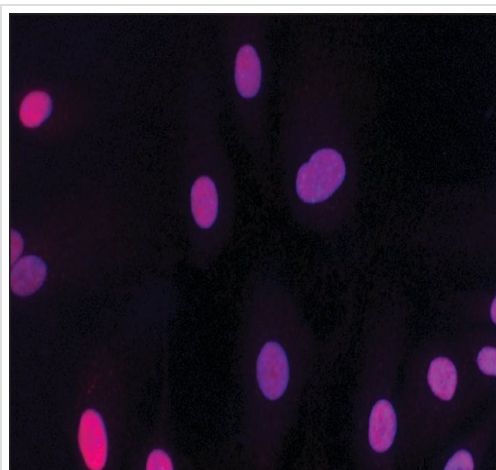
The Abpromise guarantee **Abpromise保証は、次のテスト済みアプリケーションにおけるab67282の使用に適用されます**
アプリケーションノートには、推奨の開始希釈率がありますが、適切な希釈率につきましてはご検討ください。

アプリケーション	Abreviews	特記事項
ICC		Use at an assay dependent concentration.
WB	★★★★★ (1)	Use at an assay dependent concentration. Predicted molecular weight: 24 kDa.
IP		Use at an assay dependent concentration. Use 5-10µg.

ターゲット情報

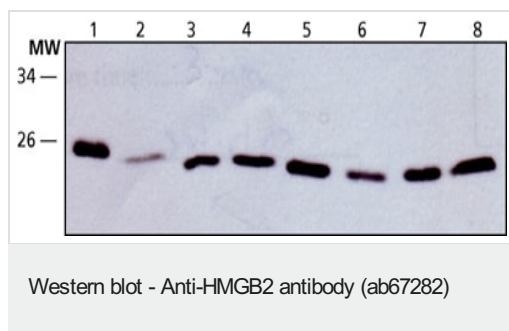
機能	DNA binding proteins that associates with chromatin and has the ability to bend DNA. Binds preferentially single-stranded DNA. Involved in V(D)J recombination by acting as a cofactor of the RAG complex. Acts by stimulating cleavage and RAG protein binding at the 23 bp spacer of conserved recombination signal sequences (RSS).
配列類似性	Belongs to the HMGB family. Contains 2 HMG box DNA-binding domains.
細胞内局在	Nucleus. Chromosome.

画像



Immunocytochemistry analysis of HUVEC cells using Anti-HMGB2 antibody (red) at a 1:50 dilution, taken at 40× magnification and nuclear staining with Hoescht 33342 (blue).

Immunocytochemistry - Anti-HMGB2 antibody
(ab67282)



All lanes : Anti-HMGB2 antibody (ab67282) at 2 mg/ml

Lane 1 : NIH3T3

Lane 2 : Rat1

Lane 3 : RINSH

Lane 4 : PC12

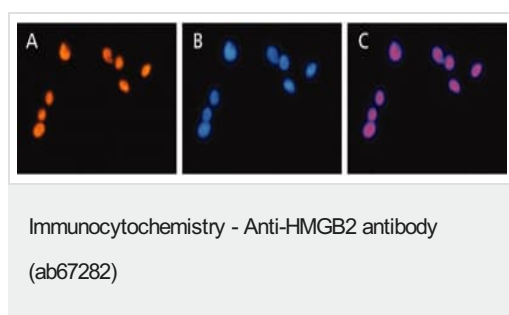
Lane 5 : K562

Lane 6 : HEK-293T

Lane 7 : HeLa nuclear

Lane 8 : HeLa

Predicted band size: 24 kDa

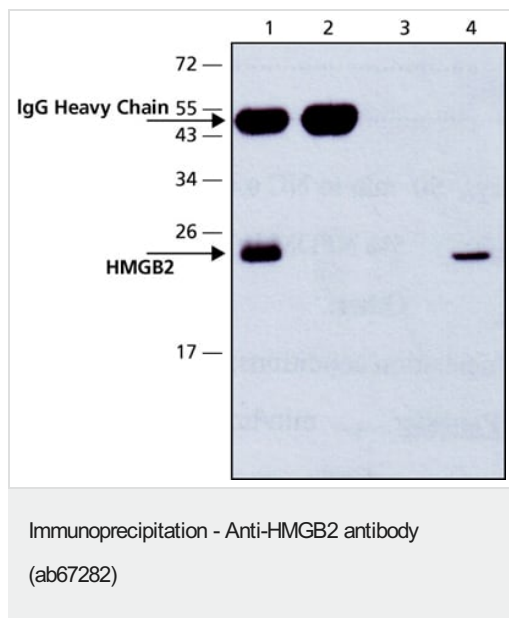


Nuclear localization of HMGB2 in PC12 cells.

A. Cells were stained with Rabbit Anti-HMGB2 (ab67282) at 1 µg/mL

B. DAPI staining

C. Merged staining of HMGB2 and DAPI indicating nuclear staining of HMGB2



Lanes

1: 5 µg of Rabbit Anti-HMGB2 (ab67282) were used to immunoprecipitate HMGB2 from HEK-293T cell lysate

2: Negative control – without cell lysate

3: Negative control – without antibody

4: Positive control – Extract of HEK-293T direct labeling

Please note: All products are "FOR RESEARCH USE ONLY. NOT FOR USE IN DIAGNOSTIC PROCEDURES"

Our Abpromise to you: Quality guaranteed and expert technical support

- Replacement or refund for products not performing as stated on the datasheet

- Valid for 12 months from date of delivery
- Response to your inquiry within 24 hours
- We provide support in Chinese, English, French, German, Japanese and Spanish
- Extensive multi-media technical resources to help you
- We investigate all quality concerns to ensure our products perform to the highest standards

If the product does not perform as described on this datasheet, we will offer a refund or replacement. For full details of the Abpromise, please visit <https://www.abcam.co.jp/abpromise> or contact our technical team.

Terms and conditions

- Guarantee only valid for products bought direct from Abcam or one of our authorized distributors