

Anti-HLA G antibody [MEM-G/9] ab7758

★★★★☆ **4 Abreviews** **28 References** 画像数 1

製品の概要

製品名	Anti-HLA G antibody [MEM-G/9]
製品の詳細	Mouse monoclonal [MEM-G/9] to HLA G
由来種	Mouse
特異性	Reacts with the native form of human HLA-G on the cell surface as well as with soluble HLA-G molecule in its beta 2-microglobulin associated form. Specificity was demonstrated with cells transfected with either full-length HLA-G and HLA-G1 complementary DNA. This antibody does not compete with a tested panel of other monoclonal antibodies to HLA-G. We have data to indicate that this antibody may not cross react with Mouse. However, this has not been conclusively tested and expression levels may vary in certain cell lines/tissues.
アプリケーション	適用あり: Flow Cyt
種交差性	交差種: Human 非交差種: Mouse
免疫原	Recombinant full length protein corresponding to Human HLA G.
特記事項	<p>The Life Science industry has been in the grips of a reproducibility crisis for a number of years. Abcam is leading the way in addressing this with our range of recombinant monoclonal antibodies and knockout edited cell lines for gold-standard validation. Please check that this product meets your needs before purchasing.</p> <p>If you have any questions, special requirements or concerns, please send us an inquiry and/or contact our Support team ahead of purchase. Recommended alternatives for this product can be found below, along with publications, customer reviews and Q&As</p>

製品の特性

製品の状態	Liquid
保存方法	Shipped at 4°C. Store at +4°C short term (1-2 weeks). Upon delivery aliquot. Store at -20°C. Avoid freeze / thaw cycle.
バッファー	pH: 7.40 Preservative: 0.097% Sodium azide Constituent: PBS
精製度	Protein A purified
ポリ/モノ	モノクローナル

クローン名	MEM-G/9
アイソタイプ	IgG1

アプリケーション

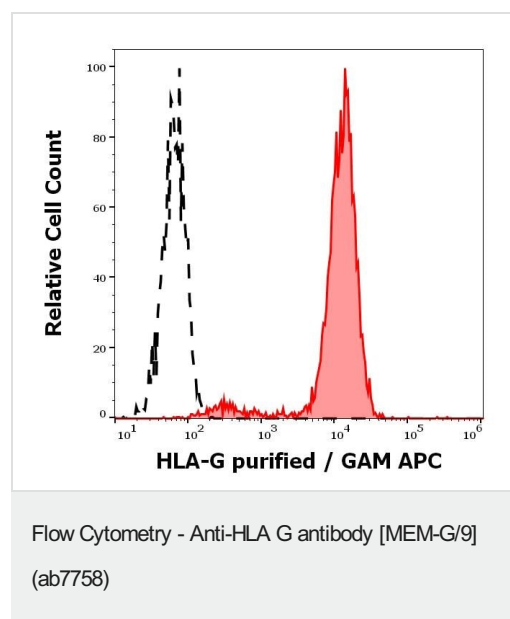
The Abpromise guarantee Abpromise保証は、次のテスト済みアプリケーションにおけるab7758の使用に適用されます
 アプリケーションノートには、推奨の開始希釈率がありますが、適切な希釈率につきましてはご検討ください。

アプリケーション	Abreviews	特記事項
Flow Cyt	★★★★★ (1)	Use at an assay dependent concentration. Do not fix cells, see Menier et al. ab170190 - Mouse monoclonal IgG1, is suitable for use as an isotype control with this antibody.

ターゲット情報

機能	Involved in the presentation of foreign antigens to the immune system. Plays a role in maternal tolerance of the fetus by mediating protection from the deleterious effects of natural killer cells, cytotoxic T lymphocytes, macrophages and mononuclear cells.
組織特異性	Expressed in trophoblasts.
配列類似性	Belongs to the MHC class I family. Contains 1 Ig-like C1-type (immunoglobulin-like) domain.
細胞内局在	Membrane.

画像



Flow cytometry analysis showing separation of HLA-G trasnfected LCL cells (red-filled) from K562 cells (black-dashed) stained using ab7758 (concentration in sample 0.3 µg/ml, GAM APC).

Please note: All products are "FOR RESEARCH USE ONLY. NOT FOR USE IN DIAGNOSTIC PROCEDURES"

Our Abpromise to you: Quality guaranteed and expert technical support

- Replacement or refund for products not performing as stated on the datasheet
- Valid for 12 months from date of delivery
- Response to your inquiry within 24 hours

- We provide support in Chinese, English, French, German, Japanese and Spanish
- Extensive multi-media technical resources to help you
- We investigate all quality concerns to ensure our products perform to the highest standards

If the product does not perform as described on this datasheet, we will offer a refund or replacement. For full details of the Abpromise, please visit <https://www.abcam.co.jp/abpromise> or contact our technical team.

Terms and conditions

- Guarantee only valid for products bought direct from Abcam or one of our authorized distributors