

### Anti-HLA E antibody ab88090

画像数 3

#### 製品の概要

---

製品名	Anti-HLA E antibody
製品の詳細	Mouse polyclonal to HLA E
由来種	Mouse
アプリケーション	<b>適用あり:</b> WB, Flow Cyt
種交差性	<b>交差種:</b> Human
免疫原	Recombinant full length protein within Human HLA E. The exact immunogen sequence used to generate this antibody is proprietary information. If additional detail on the immunogen is needed to determine the suitability of the antibody for your needs, please <b>contact</b> our Scientific Support team to discuss your requirements.
ポジティブ・コントロール	293 cells, Human spleen tissue lysate and transfected 293T cells.
特記事項	<p>The Life Science industry has been in the grips of a reproducibility crisis for a number of years. Abcam is leading the way in addressing this with our range of recombinant monoclonal antibodies and knockout edited cell lines for gold-standard validation. Please check that this product meets your needs before purchasing.</p> <p>If you have any questions, special requirements or concerns, please send us an inquiry and/or contact our Support team ahead of purchase. Recommended alternatives for this product can be found below, along with publications, customer reviews and Q&amp;As</p>

#### 製品の特性

---

製品の状態	Liquid
保存方法	Shipped at 4°C. Upon delivery aliquot and store at -20°C or -80°C. Avoid repeated freeze / thaw cycles.
バッファー	pH: 7.40 Constituent: 100% PBS
精製度	Protein A purified
ポリ/モノ	ポリクローナル
アイソタイプ	IgG

#### アプリケーション

---

## The Abpromise guarantee

**Abpromise保証は、次のテスト済みアプリケーションにおけるab88090の使用に適用されます**

アプリケーションノートには、推奨の開始希釈率がありますが、適切な希釈率につきましてはご検討ください。

アプリケーション	Abreviews	特記事項
WB		Use a concentration of 1 - 5 µg/ml. Predicted molecular weight: 40 kDa.
Flow Cyt		Use at an assay dependent concentration. <b>ab37355</b> - Mouse polyclonal IgG, is suitable for use as an isotype control with this antibody.

## ターゲット情報

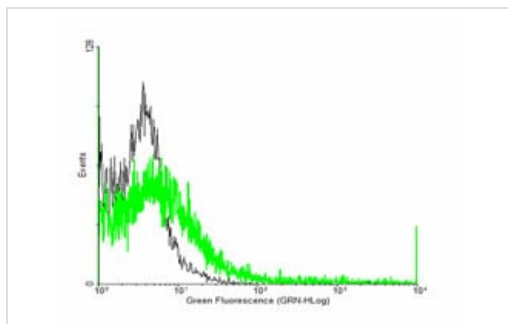
### 関連性

HLA E belongs to the HLA class I heavy chain paralogues. This class I molecule is a heterodimer consisting of a heavy chain and a light chain (beta-2 microglobulin). The heavy chain is anchored in the membrane. HLA E binds a restricted subset of peptides derived from the leader peptides of other class I molecules.

### 細胞内局在

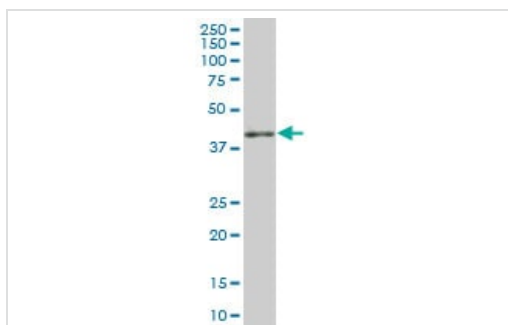
Membrane; Single-pass type I membrane protein

## 画像



Flow Cytometry - Anti-HLA E antibody (ab88090)

FACS analysis of negative control 293 cells (Black) and HLA E expressing 293 cells (Green) using ab88090.

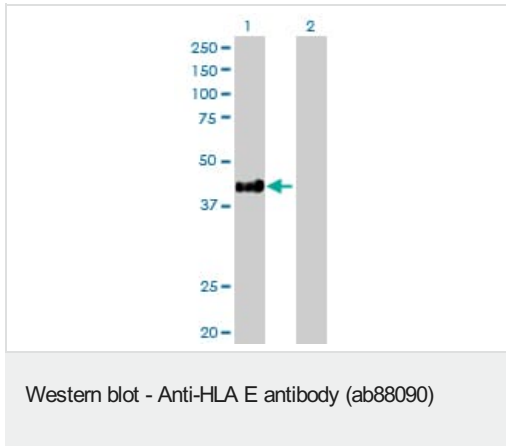


Western blot - Anti-HLA E antibody (ab88090)

Anti-HLA E antibody (ab88090) at 5 µg/ml + Human spleen tissue lysate at 50 µg

**Predicted band size:** 40 kDa

**Observed band size:** 40 kDa



**All lanes :** Anti-HLA E antibody (ab88090) at 5 µg/ml

**Lane 1 :** 293T cell line (HLA E transfected lysate)

**Lane 2 :** 293T cell line (Non-transfected lysate)

Lysates/proteins at 50 µg per lane.

**Predicted band size:** 40 kDa

**Observed band size:** 40 kDa

**Please note:** All products are "FOR RESEARCH USE ONLY. NOT FOR USE IN DIAGNOSTIC PROCEDURES"

### Our Abpromise to you: Quality guaranteed and expert technical support

---

- Replacement or refund for products not performing as stated on the datasheet
- Valid for 12 months from date of delivery
- Response to your inquiry within 24 hours
- We provide support in Chinese, English, French, German, Japanese and Spanish
- Extensive multi-media technical resources to help you
- We investigate all quality concerns to ensure our products perform to the highest standards

If the product does not perform as described on this datasheet, we will offer a refund or replacement. For full details of the Abpromise, please visit <https://www.abcam.co.jp/abpromise> or contact our technical team.

### Terms and conditions

---

- Guarantee only valid for products bought direct from Abcam or one of our authorized distributors