

Anti-HLA-DR antibody [HLA-Pan/2967R] ab257320

リコンビナント

画像数 6

製品の概要

製品名	Anti-HLA-DR antibody [HLA-Pan/2967R]
製品の詳細	Rabbit monoclonal [HLA-Pan/2967R] to HLA-DR
由来種	Rabbit
アプリケーション	適用あり: Flow Cyt, ICC/IF, WB, IHC-P
種交差性	交差種: Human
免疫原	Tissue, cells or virus corresponding to Human HLA-DR. Non-T, non-B human acute lymphoblastic leukemia REH6 cell line. Uniprot Accession: P04440; P01908; P01909; P01920; P01903.
ポジティブ・コントロール	ICC/IF: Raji and Ramos cells; Flow Cyt: Raji cells; IHC-P: Human tonsil tissue; WB: Ramos cell lysate.

製品の特性

製品の状態	Liquid
保存方法	Shipped at 4°C. Store at +4°C short term (1-2 weeks). Upon delivery aliquot. Store at -20°C long term. Avoid freeze / thaw cycle.
バッファー	pH: 7.2 Preservative: 0.05% Sodium azide Constituents: PBS, 0.05% BSA
精製度	Protein A/G purified
特記事項(精製)	Purified from Bioreactor Concentrate.
ポリ/モノ	モノクローナル
クローン名	HLA-Pan/2967R
アイソタイプ	IgG

アプリケーション

The Abpromise guarantee **Abpromise保証は、次のテスト済みアプリケーションにおけるab257320の使用に適用されず**
アプリケーションノートには、推奨の開始希釈率がありますが、適切な希釈率につきましてはご検討ください。

アプリケーション	Abreviews	特記事項
Flow Cyt		Use 1-2µg for 10 ⁶ cells.
ICC/IF		Use a concentration of 1 - 2 µg/ml.
WB		Use a concentration of 1 - 2 µg/ml. Predicted molecular weight: 29 kDa.
IHC-P		Use a concentration of 1 - 2 µg/ml. Perform heat mediated antigen retrieval with citrate buffer pH 6 before commencing with IHC staining protocol. 1-2ug/ml for 30 minutes at RT

ターゲット情報

機能

Binds peptides derived from antigens that access the endocytic route of antigen presenting cells (APC) and presents them on the cell surface for recognition by the CD4 T-cells. The peptide binding cleft accommodates peptides of 10-30 residues. The peptides presented by MHC class II molecules are generated mostly by degradation of proteins that access the endocytic route, where they are processed by lysosomal proteases and other hydrolases. Exogenous antigens that have been endocytosed by the APC are thus readily available for presentation via MHC II molecules, and for this reason this antigen presentation pathway is usually referred to as exogenous. As membrane proteins on their way to degradation in lysosomes as part of their normal turn-over are also contained in the endosomal/lysosomal compartments, exogenous antigens must compete with those derived from endogenous components. Autophagy is also a source of endogenous peptides, autophagosomes constitutively fuse with MHC class II loading compartments. In addition to APCs, other cells of the gastrointestinal tract, such as epithelial cells, express MHC class II molecules and CD74 and act as APCs, which is an unusual trait of the GI tract. To produce a MHC class II molecule that presents an antigen, three MHC class II molecules (heterodimers of an alpha and a beta chain) associate with a CD74 trimer in the ER to form an heteronamer. Soon after the entry of this complex into the endosomal/lysosomal system where antigen processing occurs, CD74 undergoes a sequential degradation by various proteases, including CTSS and CTSL, leaving a small fragment termed CLIP (class-II-associated invariant chain peptide). The removal of CLIP is facilitated by HLA-DM via direct binding to the alpha-beta-CLIP complex so that CLIP is released. HLA-DM stabilizes MHC class II molecules until primary high affinity antigenic peptides are bound. The MHC II molecule bound to a peptide is then transported to the cell membrane surface. In B-cells, the interaction between HLA-DM and MHC class II molecules is regulated by HLA-DO. Primary dendritic cells (DCs) also to express HLA-DO. Lysosomal microenvironment has been implicated in the regulation of antigen loading into MHC II molecules, increased acidification produces increased proteolysis and efficient peptide loading.

配列類似性

Belongs to the MHC class II family.
Contains 1 Ig-like C1-type (immunoglobulin-like) domain.

翻訳後修飾

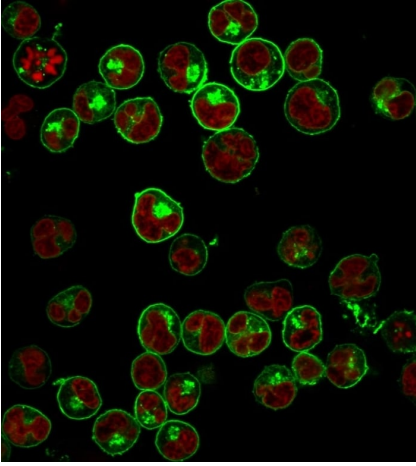
Ubiquitinated by MARCH1 or MARCH8 at Lys-244 leading to down-regulation of MHC class II. When associated with ubiquitination of the beta subunit of HLA-DR: HLA-DRB4 'Lys-254', the down-regulation of MHC class II may be highly effective.

細胞内局在

Cell membrane. Endoplasmic reticulum membrane. Golgi apparatus > trans-Golgi network membrane. Endosome membrane. Lysosome membrane. Late endosome membrane. The MHC class II complex transits through a number of intracellular compartments in the endocytic pathway

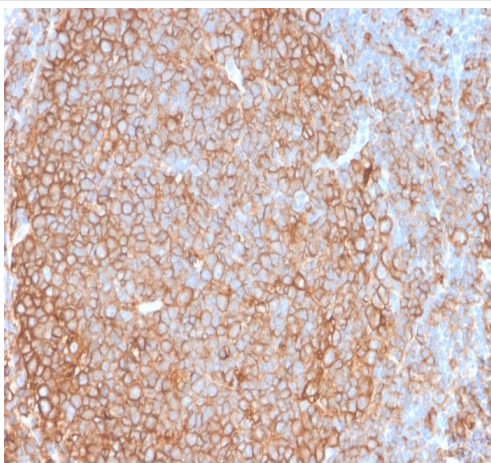
until it reaches the cell membrane for antigen presentation.

画像



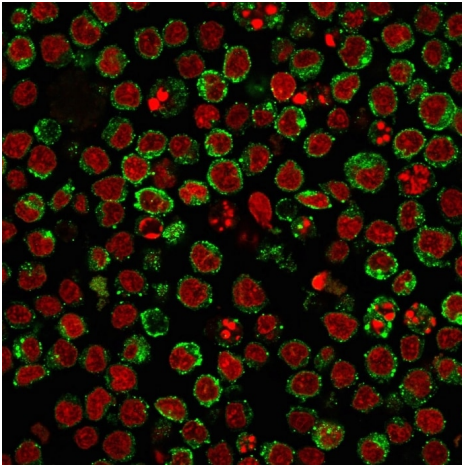
Immunocytochemistry/ Immunofluorescence - Anti-HLA-DR antibody [HLA-Pan/2967R] (ab257320)

Immunocytochemistry/ Immunofluorescent analysis of Ramos cells staining HLA-DR with ab257320 at 2 μ g/ml, followed by a goat anti-rabbit IgG-CF488 secondary (green). Nuclei stained with reddot (red).



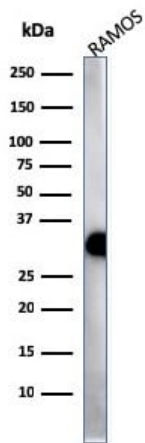
Immunohistochemistry (Formalin/PFA-fixed paraffin-embedded sections) - Anti-HLA-DR antibody [HLA-Pan/2967R] (ab257320)

Immunohistochemical analysis of formalin fixed, paraffin-embedded human tonsil staining HLA-DR with ab257320 at 2 μ g/ml for 30 minutes at room temperature.



Immunocytochemistry/ Immunofluorescent analysis of Ramos cells staining HLA-DR with ab257320 at 2 μ g/ml, followed by a goat anti-rabbit IgG-CF488 secondary (blue) and an isotype control (red).

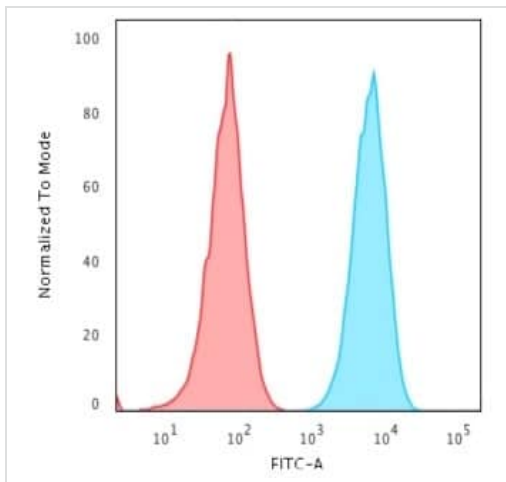
Immunocytochemistry/ Immunofluorescence - Anti-HLA-DR antibody [HLA-Pan/2967R] (ab257320)



Anti-HLA-DR antibody [HLA-Pan/2967R] (ab257320) at 2 μ g/ml + Ramos cell lysate

Predicted band size: 29 kDa





Western blot - Anti-HLA-DR antibody [HLA-Pan/2967R] (ab257320)



Flow Cytometric analysis of Raji cells staining HLA-DR with ab257320, followed by a goat anti-rabbit IgG-CF488 secondary antibody (blue). Isotype control (red).

Flow Cytometry - Anti-HLA-DR antibody [HLA-Pan/2967R] (ab257320)

Why choose a recombinant antibody?

 <p>Research with confidence Consistent and reproducible results</p>	 <p>Long-term and scalable supply Recombinant technology</p>
 <p>Success from the first experiment Confirmed specificity</p>	 <p>Ethical standards compliant Animal-free production</p>

Anti-HLA-DR antibody [HLA-Pan/2967R] (ab257320)

Please note: All products are "FOR RESEARCH USE ONLY. NOT FOR USE IN DIAGNOSTIC PROCEDURES"

Our Abpromise to you: Quality guaranteed and expert technical support

- Replacement or refund for products not performing as stated on the datasheet
- Valid for 12 months from date of delivery
- Response to your inquiry within 24 hours
- We provide support in Chinese, English, French, German, Japanese and Spanish
- Extensive multi-media technical resources to help you

- We investigate all quality concerns to ensure our products perform to the highest standards

If the product does not perform as described on this datasheet, we will offer a refund or replacement. For full details of the Abpromise, please visit <https://www.abcam.co.jp/abpromise> or contact our technical team.

Terms and conditions

- Guarantee only valid for products bought direct from Abcam or one of our authorized distributors