

### Anti-HLA Class I antibody [W6/32] ab22432

リコンビナント

★★★★★ **1 Abreviews** **32 References** **画像数 4**

#### 製品の概要

製品名	Anti-HLA Class I antibody [W6/32]
製品の詳細	Mouse monoclonal [W6/32] to HLA Class I
由来種	Mouse
アプリケーション	<b>適用あり:</b> Flow Cyt, ICC/IF, IHC-Fr
種交差性	<b>交差種:</b> Human
免疫原	Tissue, cells or virus corresponding to Human HLA Class I. Purified human tonsil lymphocyte membranes.
ポジティブ・コントロール	IHC-Fr: Human heart tissue. ICC/IF: HeLa cells. Flow Cyt: Jurkat cells.
特記事項	<p>This product has switched from a hybridoma to recombinant production method on 25th March 2024.</p> <p>This product is a recombinant monoclonal antibody, which offers several advantages including:</p> <ul style="list-style-type: none"><li>- High batch-to-batch consistency and reproducibility</li><li>- Improved sensitivity and specificity</li><li>- Long-term security of supply</li><li>- Animal-free production</li></ul> <p>For more information <a href="#">see here</a>.</p>

#### 製品の特性

製品の状態	Liquid
保存方法	Shipped at 4°C. Store at +4°C short term (1-2 weeks). Upon delivery aliquot. Store at -20°C. Avoid freeze / thaw cycle.
バッファー	pH: 7.20 Preservative: 0.01% Sodium azide Constituents: 59% PBS, 0.05% BSA, 40% Glycerol (glycerin, glycerine)
精製度	Protein A purified
ポリモノ	モノクローナル
クローン名	W6/32
ミエローマ	NS1/1-Ag4-1

アプリケーション

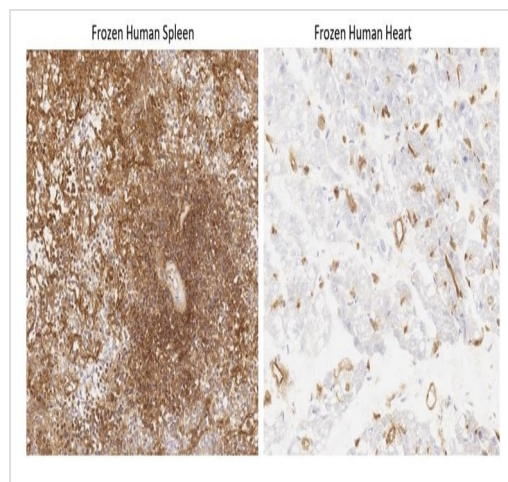
The Abpromise guarantee **Abpromise保証は、次のテスト済みアプリケーションにおけるab22432の使用に適用されず**  
 アプリケーションノートには、推奨の開始希釈率がありますが、適切な希釈率につきましてはご検討ください。

アプリケーション	Abreviews	特記事項
Flow Cyt		Use a concentration of 0.2 µg/ml.
ICC/IF	★★★★★ (1)	Use a concentration of 1 µg/ml.
IHC-Fr		Use a concentration of 0.05 µg/ml.

ターゲット情報

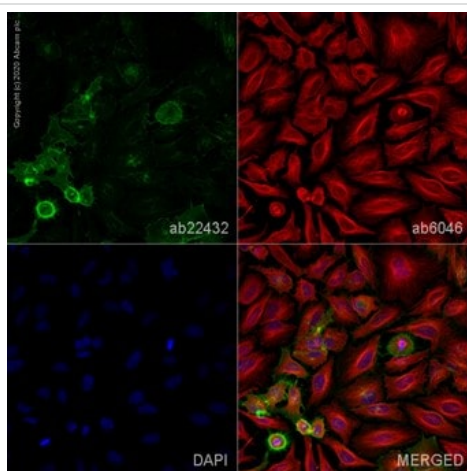
**関連性** HLA Class I is involved in the presentation of foreign antigens to the immune system.  
**細胞内局在** Plasma membrane

画像



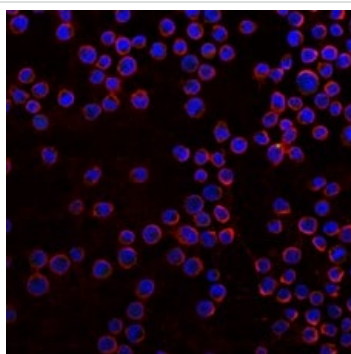
Immunohistochemical analysis of ab22432 10% paraformaldehyde fixed endothelial cells in frozen Human spleen tissue Human heart tissue labeling HLA Class I with ab22432 at 0.05µg/ml. Detected using an HRP conjugated compact polymer system. DAB was used as the chromogen. The section was then counterstained with haematoxylin and mounted with DPX.

Immunohistochemistry (Frozen sections) - Anti-HLA Class I antibody [W6/32] (ab22432)



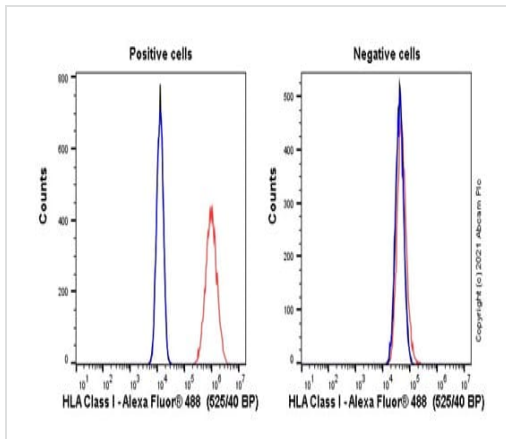
Immunocytochemistry/ Immunofluorescence - Anti-  
HLA Class I antibody [W6/32] (ab22432)

Immunofluorescent analysis of 4% Paraformaldehyde-fixed, 0.1% PBS-Tween permeabilized HeLa (human cervical adenocarcinoma epithelial cell) cells labelling HLA Class I with ab22432 at 1µg/mL, blocked with 1% BSA/10% normal goat serum/0.3M glycine in 0.1%PBS-Tween for 1h. The cells were then incubated overnight at 4°C with **ab92494** at 1µg/mL and **ab6046**, Rabbit polyclonal to beta Tubulin - Loading Control. Cells were then incubated with **ab150117**, Goat polyclonal Secondary Antibody to Mouse IgG H&L (Alexa Fluor® 488) preadsorbed at 1/1000 dilution (shown in green) and **ab150080**, Goat polyclonal Secondary Antibody to Rabbit IgG - H&L (Alexa Fluor® 594) at 1/1000 dilution (shown in red). Nuclear DNA was labelled with DAPI (shown in blue). Image was acquired with a high-content analyser (Operetta CLS, Perkin Elmer) and a maximum intensity projection of confocal sections is shown.



Immunocytochemistry/ Immunofluorescence - Anti-  
HLA Class I antibody [W6/32] (ab22432)

Immunofluorescent analysis of 4% Paraformaldehyde-fixed, 0.1% PBS-Tween permeabilized negative cell line K562 labelling HLA Class I with ab22432 at 1µg/mL, blocked with 1% BSA/10% normal goat serum/0.3M glycine in 0.1%PBS-Tween for 1h. The cells were then incubated overnight at 4°C with **ab227805** at 5µg/ml and **ab6046**, Rabbit polyclonal to beta Tubulin - Loading Control. Cells were then incubated with **ab150117**, Goat polyclonal Secondary Antibody to Mouse IgG H&L (Alexa Fluor® 488) preadsorbed at 1/1000 dilution (shown in green) and **ab150080**, Goat polyclonal Secondary Antibody to Rabbit IgG - H&L (Alexa Fluor® 594) at 1/1000 dilution (shown in red). Nuclear DNA was labelled with DAPI (shown in blue). Also suitable in cells fixed with 100% methanol (5 min). Image was acquired with a confocal microscope (Leica-Microsystems TCS SP8) and a single confocal section is shown.



Flow Cytometry - Anti-HLA Class I antibody [W6/32]  
(ab22432)

Flow cytometry overlay histogram showing left Jurkat positive cells and right negative K562 cells stained with ab22432 (red line). The cells were incubated in 1x PBS containing 10 % normal goat serum to block non-specific protein-protein interaction followed by the antibody (ab22432) ( $1 \times 10^6$  in 100  $\mu$ l at 0.2  $\mu$ g/ml) for 30 min on ice. The secondary antibody Goat anti-mouse IgG H&L (Alexa Fluor® 488, pre-adsorbed) (**ab150117**) was used at for 30 min on ice. Isotype control antibody (black line) was mouse IgG2ak (**ab18413**) used at the same concentration and conditions as the primary antibody. Unlabeled sample (blue line) was also used as a control. Acquisition of >5000 events were collected using a 50 mW Blue laser (488nm) and 525/40 bandpass filter.

**Please note:** All products are "FOR RESEARCH USE ONLY. NOT FOR USE IN DIAGNOSTIC PROCEDURES"

### Our Abpromise to you: Quality guaranteed and expert technical support

- Replacement or refund for products not performing as stated on the datasheet
- Valid for 12 months from date of delivery
- Response to your inquiry within 24 hours
- We provide support in Chinese, English, French, German, Japanese and Spanish
- Extensive multi-media technical resources to help you
- We investigate all quality concerns to ensure our products perform to the highest standards

If the product does not perform as described on this datasheet, we will offer a refund or replacement. For full details of the Abpromise, please visit <https://www.abcam.co.jp/abpromise> or contact our technical team.

### Terms and conditions

- Guarantee only valid for products bought direct from Abcam or one of our authorized distributors