

### Anti-HIV1 tat antibody - ChIP Grade ab43014

★★★★☆ **4 Abreviews**   **23 References**   画像数 1

#### 製品の概要

製品名	Anti-HIV1 tat antibody - ChIP Grade
製品の詳細	Rabbit polyclonal to HIV1 tat
由来種	Rabbit
アプリケーション	<b>適用あり:</b> WB, EMSA
種交差性	<b>交差種:</b> Human immunodeficiency virus
免疫原	Recombinant full length protein expressed in E.coli.
特記事項	<p>The Life Science industry has been in the grips of a reproducibility crisis for a number of years. Abcam is leading the way in addressing this with our range of recombinant monoclonal antibodies and knockout edited cell lines for gold-standard validation. Please check that this product meets your needs before purchasing.</p> <p>If you have any questions, special requirements or concerns, please send us an inquiry and/or contact our Support team ahead of purchase. Recommended alternatives for this product can be found below, along with publications, customer reviews and Q&amp;As</p>

#### 製品の特性

製品の状態	Liquid
保存方法	Shipped at 4°C. Store at +4°C short term (1-2 weeks). Upon delivery aliquot. Store at -20°C. Avoid freeze / thaw cycle.
精製度	Protein A purified
ポリ/モノ	ポリクローナル
アイソタイプ	IgG

#### アプリケーション

**The Abpromise guarantee**   Abpromise保証は、 次のテスト済みアプリケーションにおけるab43014の使用に適用されます  
 アプリケーションノートには、推奨の開始希釈率がありますが、適切な希釈率につきましてはご検討ください。

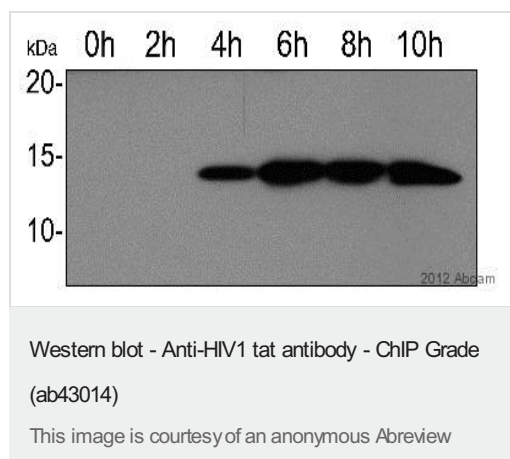
アプリケーション	Abreviews	特記事項
WB	★★★★★ (4)	Use at an assay dependent concentration.
EMSA		Use at an assay dependent concentration.

## ターゲット情報

**関連性** HIV1 tat (Transactivator of Transcription) protein is a pleiotropic factor that induces a broad range of biological effects in numerous cell types. At the HIV promoter, tat is a powerful transactivator of gene expression which acts by inducing chromatin remodeling and by recruiting elongation-competent transcriptional complexes on to the viral LTR.

**細胞内局在** Nuclear. Upon stimulation with EDN1, it is exported from the nucleus to the perinuclear region.

## 画像



**All lanes** : Anti-HIV1 tat antibody - ChIP Grade (ab43014) at 1/2000 dilution

**Lane 1** : Jurkat whole cell lysate 0 hours after infection

**Lane 2** : Jurkat whole cell lysate 2 hours after infection

**Lane 3** : Jurkat whole cell lysate 4 hours after infection

**Lane 4** : Jurkat whole cell lysate 6 hours after infection

**Lane 5** : Jurkat whole cell lysate 8 hours after infection

**Lane 6** : Jurkat whole cell lysate 10 hours after infection

Lysates/proteins at 25 µg per lane.

### Secondary

**All lanes** : HRP Goat anti-rabbit IgG polyclonal at 1/10000 dilution

Developed using the ECL technique.

Performed under reducing conditions.

**Observed band size:** 14 kDa

Jurkat cells were pNL4.3 infected and samples taken at 2 hour intervals for blotting.

**Please note:** All products are "FOR RESEARCH USE ONLY. NOT FOR USE IN DIAGNOSTIC PROCEDURES"

### **Our Abpromise to you: Quality guaranteed and expert technical support**

---

- Replacement or refund for products not performing as stated on the datasheet
- Valid for 12 months from date of delivery
- Response to your inquiry within 24 hours
  
- We provide support in Chinese, English, French, German, Japanese and Spanish
- Extensive multi-media technical resources to help you
- We investigate all quality concerns to ensure our products perform to the highest standards

If the product does not perform as described on this datasheet, we will offer a refund or replacement. For full details of the Abpromise, please visit <https://www.abcam.co.jp/abpromise> or contact our technical team.

### **Terms and conditions**

---

- Guarantee only valid for products bought direct from Abcam or one of our authorized distributors