

# Anti-Histone H3 (phospho S10) antibody [EPR17246] - ChIP Grade ab177218

リコンビナント **RabMAb**

[1 Abreviews](#) [7 References](#) [画像数 10](#)

### 製品の概要

製品名	Anti-Histone H3 (phospho S10) antibody [EPR17246] - ChIP Grade
製品の詳細	Rabbit monoclonal [EPR17246] to Histone H3 (phospho S10) - ChIP Grade
由来種	Rabbit
アプリケーション	<b>適用あり:</b> PepArr, ChIP, IHC-P, WB, ICC/IF
種交差性	<b>交差種:</b> Mouse, Rat, Human
免疫原	Synthetic peptide. This information is proprietary to Abcam and/or its suppliers.
ポジティブ・コントロール	WB; HeLa and NIH/3T3 treated with 1.5µg/ml Colcemid for 12 hours whole cell lysates. IHC-P: Human tonsil; Human ovarian carcinoma; Mouse spleen; Rat spleen. ICC/IF: HeLa cells. ChIP: Chromatin from Colcemid treated HeLa cells.
特記事項	<p>This product is a recombinant monoclonal antibody, which offers several advantages including:</p> <ul style="list-style-type: none"> <li>- High batch-to-batch consistency and reproducibility</li> <li>- Improved sensitivity and specificity</li> <li>- Long-term security of supply</li> <li>- Animal-free production</li> </ul> <p>For more information <a href="#">see here</a>.</p> <p>Our RabMAb<sup>®</sup> technology is a patented hybridoma-based technology for making rabbit monoclonal antibodies. For details on our patents, please refer to <a href="#">RabMAb<sup>®</sup> patents</a>.</p>

### 製品の特性

製品の状態	Liquid
保存方法	Shipped at 4°C. Store at +4°C short term (1-2 weeks). Upon delivery aliquot. Store at -20°C long term. Avoid freeze / thaw cycle.
バッファー	<p>Preservative: 0.01% Sodium azide</p> <p>Constituents: 59% PBS, 40% Glycerol (glycerin, glycerine), 0.05% BSA</p>
精製度	Protein A purified
ポリ/モノ	モノクローナル
クローン名	EPR17246

## アプリケーション

The Abpromise guarantee Abpromise保証は、次のテスト済みアプリケーションにおけるab177218の使用に適用されます  
アプリケーションノートには、推奨の開始希釈率がありますが、適切な希釈率につきましてはご確認ください。

アプリケーション	Abreviews	特記事項
PepArr		Use at an assay dependent concentration.
ChIP		Use 2 µg for 25 µg of chromatin.
IHC-P		1/500 - 1/8000. Perform heat mediated antigen retrieval with Tris/EDTA buffer pH 9.0 before commencing with IHC staining protocol.
WB		1/200. Detects a band of approximately 15 kDa (predicted molecular weight: 15 kDa).
ICC/IF		1/5000.

## ターゲット情報

機能	Core component of nucleosome. Nucleosomes wrap and compact DNA into chromatin, limiting DNA accessibility to the cellular machineries which require DNA as a template. Histones thereby play a central role in transcription regulation, DNA repair, DNA replication and chromosomal stability. DNA accessibility is regulated via a complex set of post-translational modifications of histones, also called histone code, and nucleosome remodeling.
配列類似性	Belongs to the histone H3 family.
発生段階	Expressed during S phase, then expression strongly decreases as cell division slows down during the process of differentiation.
翻訳後修飾	<p>Acetylation is generally linked to gene activation. Acetylation on Lys-10 (H3K9ac) impairs methylation at Arg-9 (H3R8me2s). Acetylation on Lys-19 (H3K18ac) and Lys-24 (H3K24ac) favors methylation at Arg-18 (H3R17me).</p> <p>Citrullination at Arg-9 (H3R8ci) and/or Arg-18 (H3R17ci) by PAD14 impairs methylation and represses transcription.</p> <p>Asymmetric dimethylation at Arg-18 (H3R17me2a) by CARM1 is linked to gene activation. Symmetric dimethylation at Arg-9 (H3R8me2s) by PRMT5 is linked to gene repression. Asymmetric dimethylation at Arg-3 (H3R2me2a) by PRMT6 is linked to gene repression and is mutually exclusive with H3 Lys-5 methylation (H3K4me2 and H3K4me3). H3R2me2a is present at the 3' of genes regardless of their transcription state and is enriched on inactive promoters, while it is absent on active promoters.</p> <p>Methylation at Lys-5 (H3K4me), Lys-37 (H3K36me) and Lys-80 (H3K79me) are linked to gene activation. Methylation at Lys-5 (H3K4me) facilitates subsequent acetylation of H3 and H4. Methylation at Lys-80 (H3K79me) is associated with DNA double-strand break (DSB) responses and is a specific target for TP53BP1. Methylation at Lys-10 (H3K9me) and Lys-28 (H3K27me) are linked to gene repression. Methylation at Lys-10 (H3K9me) is a specific target for HP1 proteins (CBX1, CBX3 and CBX5) and prevents subsequent phosphorylation at Ser-11</p>

(H3S10ph) and acetylation of H3 and H4. Methylation at Lys-5 (H3K4me) and Lys-80 (H3K79me) require preliminary monoubiquitination of H2B at 'Lys-120'. Methylation at Lys-10 (H3K9me) and Lys-28 (H3K27me) are enriched in inactive X chromosome chromatin.

Phosphorylated at Thr-4 (H3T3ph) by GSG2/haspin during prophase and dephosphorylated during anaphase. Phosphorylation at Ser-11 (H3S10ph) by AURKB is crucial for chromosome condensation and cell-cycle progression during mitosis and meiosis. In addition phosphorylation at Ser-11 (H3S10ph) by RPS6KA4 and RPS6KA5 is important during interphase because it enables the transcription of genes following external stimulation, like mitogens, stress, growth factors or UV irradiation and result in the activation of genes, such as c-fos and c-jun.

Phosphorylation at Ser-11 (H3S10ph), which is linked to gene activation, prevents methylation at Lys-10 (H3K9me) but facilitates acetylation of H3 and H4. Phosphorylation at Ser-11 (H3S10ph) by AURKB mediates the dissociation of HP1 proteins (CBX1, CBX3 and CBX5) from heterochromatin. Phosphorylation at Ser-11 (H3S10ph) is also an essential regulatory mechanism for neoplastic cell transformation. Phosphorylated at Ser-29 (H3S28ph) by MLTK isoform 1, RPS6KA5 or AURKB during mitosis or upon ultraviolet B irradiation. Phosphorylation at Thr-7 (H3T6ph) by PRKCBB is a specific tag for epigenetic transcriptional activation that prevents demethylation of Lys-5 (H3K4me) by LSD1/KDM1A. At centromeres, specifically phosphorylated at Thr-12 (H3T11ph) from prophase to early anaphase, by DAPK3 and PKN1. Phosphorylation at Thr-12 (H3T11ph) by PKN1 is a specific tag for epigenetic transcriptional activation that promotes demethylation of Lys-10 (H3K9me) by KDM4C/JMJD2C.

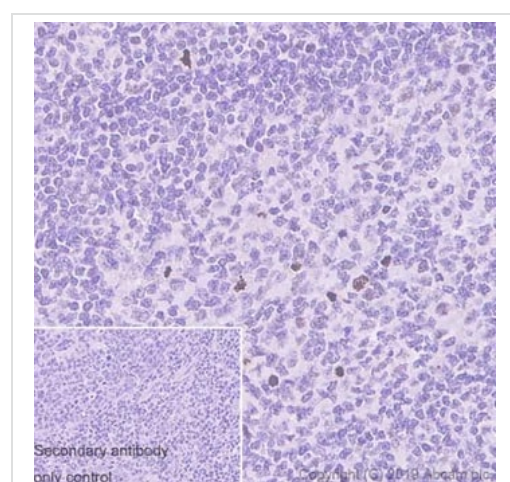
Phosphorylation at Tyr-42 (H3Y41ph) by JAK2 promotes exclusion of CBX5 (HP1 alpha) from chromatin.

Monoubiquitinated by RAG1 in lymphoid cells, monoubiquitination is required for V(D)J recombination (By similarity). Ubiquitinated by the CUL4-DDB-RBX1 complex in response to ultraviolet irradiation. This may weaken the interaction between histones and DNA and facilitate DNA accessibility to repair proteins.

細胞内局在

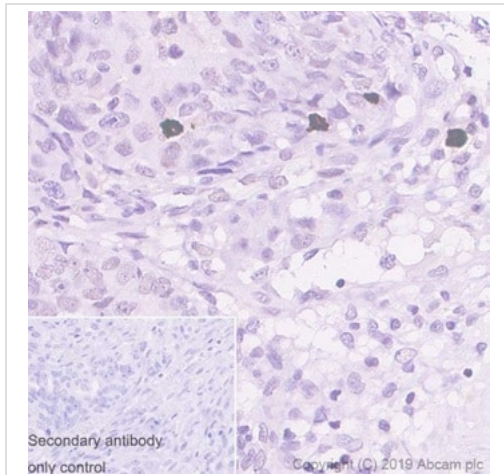
Nucleus. Chromosome.

画像



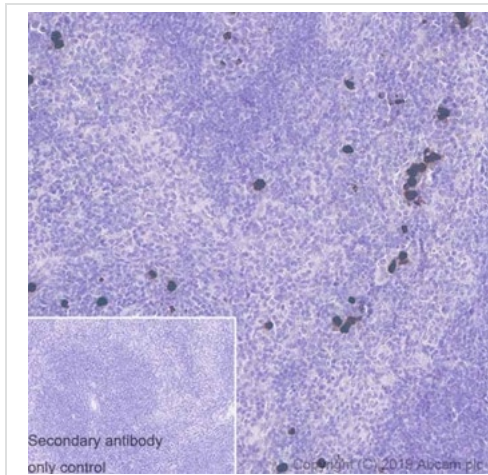
Positive staining on paraffin-embedded sections of Human tonsil. Heat-mediated antigen retrieval was performed using **ab93684** (Tris/EDTA buffer, pH 9.0). Samples were incubated with primary antibody at a 1:1000 dilution (2.37 µg/ml). A ready-to-use Goat Anti-Rabbit IgG H&L (HRP Polymer) was used as the secondary antibody. Hematoxylin was used as the counterstain. A secondary antibody-only control was also performed.

Immunohistochemistry (Formalin/PFA-fixed paraffin-embedded sections) - Anti-Histone H3 (phospho S10) antibody [EPR17246] - ChIP Grade (ab177218)



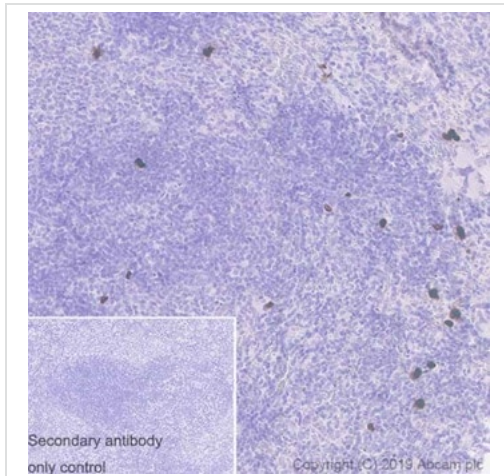
Immunohistochemistry (Formalin/PFA-fixed paraffin-embedded sections) - Anti-Histone H3 (phospho S10) antibody [EPR17246] - ChIP Grade (ab177218)

Positive staining on paraffin-embedded sections of Human ovarian carcinoma. Heat-mediated antigen retrieval was performed using **ab93684** (Tris/EDTA buffer, pH 9.0). Samples were incubated with primary antibody at a 1:1000 dilution (2.37 µg/ml). A ready-to-use Goat Anti-Rabbit IgG H&L (HRP Polymer) was used as the secondary antibody. Hematoxylin was used as the counterstain. A secondary antibody-only control was also performed.



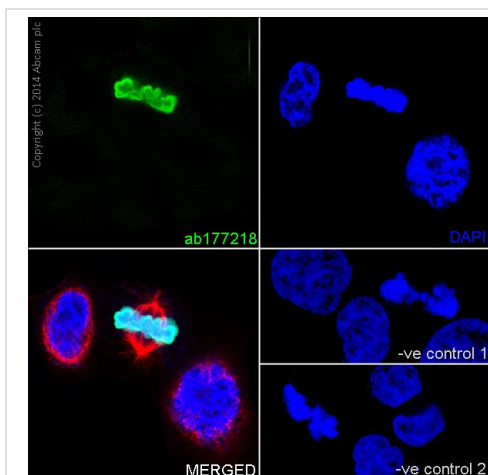
Immunohistochemistry (Formalin/PFA-fixed paraffin-embedded sections) - Anti-Histone H3 (phospho S10) antibody [EPR17246] - ChIP Grade (ab177218)

Positive staining on paraffin-embedded sections of Mouse spleen. Heat-mediated antigen retrieval was performed using **ab93684** (Tris/EDTA buffer, pH 9.0). Samples were incubated with primary antibody at a 1:8000 dilution (0.3 µg/ml). A ready-to-use Goat Anti-Rabbit IgG H&L (HRP Polymer) was used as the secondary antibody. Hematoxylin was used as the counterstain. A secondary antibody-only control was also performed.



Immunohistochemistry (Formalin/PFA-fixed paraffin-embedded sections) - Anti-Histone H3 (phospho S10) antibody [EPR17246] - ChIP Grade (ab177218)

Positive staining on paraffin-embedded sections of Rat spleen. Heat-mediated antigen retrieval was performed using **ab93684** (Tris/EDTA buffer, pH 9.0). Samples were incubated with primary antibody at a 1:8000 dilution (0.3 µg/ml). A ready-to-use Goat Anti-Rabbit IgG H&L (HRP Polymer) was used as the secondary antibody. Hematoxylin was used as the counterstain. A secondary antibody-only control was also performed.



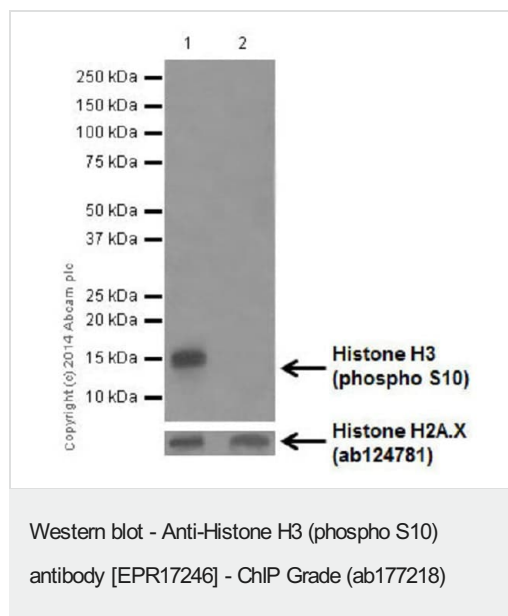
Immunocytochemistry/ Immunofluorescence - Anti-Histone H3 (phospho S10) antibody [EPR17246] - ChIP Grade (ab177218)

Immunofluorescent analysis of 4% paraformaldehyde-fixed, 0.1% Triton X-100 permeabilized HeLa (Human epithelial cells from cervix adenocarcinoma) cells labeling Histone H3 (phospho S10) with ab177218 at 1/5000 dilution, followed by Goat anti-rabbit IgG (Alexa Fluor® 488) (**ab150077**) secondary antibody at 1/500 dilution (green). Confocal image showing nuclear staining on HeLa cell line. The nuclear counter stain is DAPI (blue). Tubulin is detected with **ab7291** (anti-Tubulin mouse mAb) at 1/1000 dilution and **ab150120** (AlexaFluor®594 Goat anti-Mouse secondary) at 1/500 dilution (red).

The negative controls are as follows:

-ve control 1: ab177218 at 1/5000 dilution followed by **ab150120** (AlexaFluor®594 Goat anti-Mouse secondary) at 1/500 dilution.  
 -ve control 2: **ab7291** (anti-Tubulin mouse mAb) at 1/1000 dilution followed by **ab150077** (Alexa Fluor®488 Goat Anti-Rabbit IgG H&L) at 1/500 dilution.





**All lanes** : Anti-Histone H3 (phospho S10) antibody [EPR17246] - ChIP Grade (ab177218) at 1/200 dilution

**Lane 1** : HeLa (Human epithelial cells from cervix adenocarcinoma) treated with 1.5µg/ml Colcemid for 12 hours whole cell lysates

**Lane 2** : Untreated HeLa (Human epithelial cells from cervix adenocarcinoma) whole cell lysates

Lysates/proteins at 10 µg per lane.

## Secondary

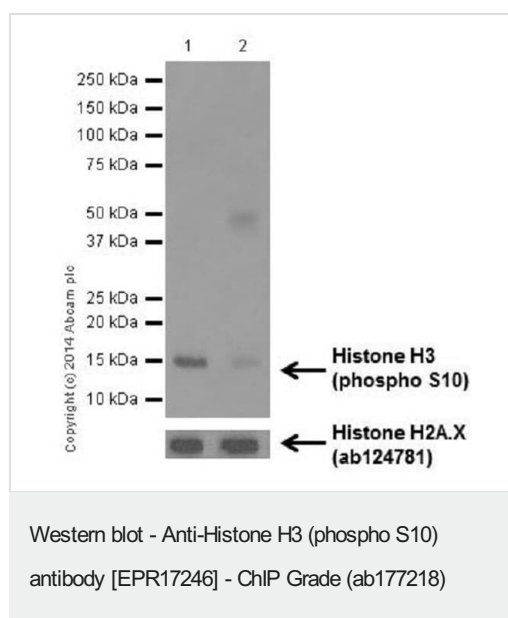
**All lanes** : Goat Anti-Rabbit IgG, (H+L), Peroxidase conjugated at 1/1000 dilution

**Predicted band size:** 15 kDa

**Observed band size:** 15 kDa

**Exposure time:** 30 seconds

Blocking/Dilution buffer: 5% BSA /TBST.



**All lanes** : Anti-Histone H3 (phospho S10) antibody [EPR17246] - ChIP Grade (ab177218) at 1/200 dilution

**Lane 1** : NIH/3T3 (Mouse embryo fibroblast cells) treated with 1.5µg/ml Colcemid for 12 hours whole cell lysates

**Lane 2** : Untreated NIH/3T3 (Mouse embryo fibroblast cells) whole cell lysates

Lysates/proteins at 10 µg per lane.

## Secondary

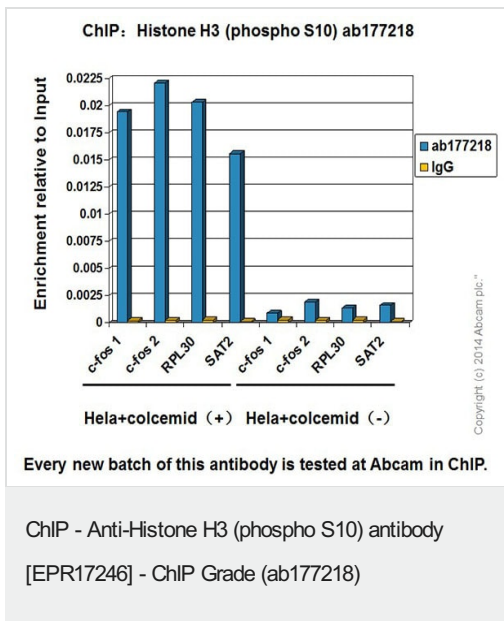
**All lanes** : Goat Anti-Rabbit IgG, (H+L), Peroxidase conjugated at 1/1000 dilution

**Predicted band size:** 15 kDa

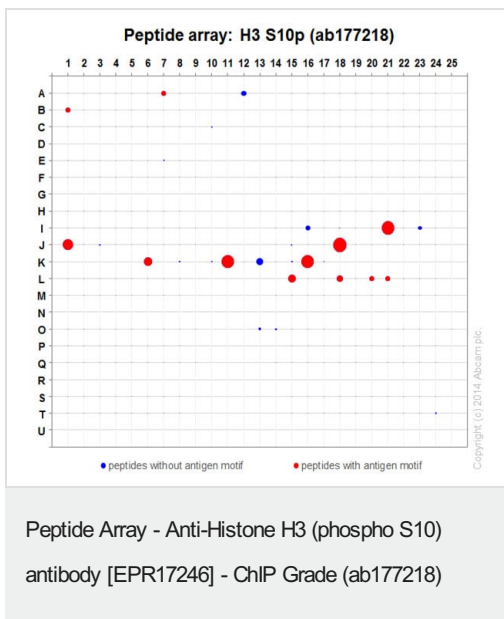
**Observed band size:** 15 kDa

**Exposure time:** 15 seconds

Blocking/Dilution buffer: 5% BSA /TBST.



Chromatin was prepared from HeLa (Human epithelial cells from cervix adenocarcinoma) cells according to the Abcam X-ChIP protocol. HeLa (Human epithelial cells from cervix adenocarcinoma) cells were treated with colcemid at 150ng/ml for 20 h. Treated and non-treated cells were fixed with formaldehyde for 10 minutes. The ChIP was performed with 25µg of chromatin, 2µg of ab177218 (blue), and 20µl of Anti rabbit IgG sepharose beads. 2µg of rabbit normal IgG was added to the beads control (yellow). The immunoprecipitated DNA was quantified by real time PCR (Sybr green approach).



ab177218 was tested in Peptide array against 501 different modified and unmodified histone peptides; each peptide is printed on the array at six concentrations (each in triplicate).

Circle area represents affinity between the antibody and a peptide: all antigen-containing peptides are displayed as red circles, all other peptides as blue circles. The affinity is calculated as area under curve when antibody binding values are plotted against the corresponding peptide concentration. Each circle area is normalized to the peptide with the strongest affinity.

The complete dataset, including full list of all peptides and information on the position of each peptide in the diagram, can be downloaded [here](#).

### Why choose a recombinant antibody?



**Research with confidence**  
Consistent and reproducible results



**Long-term and scalable supply**  
Recombinant technology



**Success from the first experiment**  
Confirmed specificity



**Ethical standards compliant**  
Animal-free production

Anti-Histone H3 (phospho S10) antibody  
[EPR17246] - ChIP Grade (ab177218)

**Please note:** All products are "FOR RESEARCH USE ONLY. NOT FOR USE IN DIAGNOSTIC PROCEDURES"

### Our Abpromise to you: Quality guaranteed and expert technical support

---

- Replacement or refund for products not performing as stated on the datasheet
- Valid for 12 months from date of delivery
- Response to your inquiry within 24 hours
- We provide support in Chinese, English, French, German, Japanese and Spanish
- Extensive multi-media technical resources to help you
- We investigate all quality concerns to ensure our products perform to the highest standards

If the product does not perform as described on this datasheet, we will offer a refund or replacement. For full details of the Abpromise, please visit <https://www.abcam.co.jp/abpromise> or contact our technical team.

### Terms and conditions

---

- Guarantee only valid for products bought direct from Abcam or one of our authorized distributors