


Anti-Histone H3 (mono methyl K36) antibody - ChIP Grade ab9048

★★★★☆ **14 Abreviews** **106 References** 画像数 4

製品の概要

製品名	Anti-Histone H3 (mono methyl K36) antibody - ChIP Grade
製品の詳細	Rabbit polyclonal to Histone H3 (mono methyl K36) - ChIP Grade
由来種	Rabbit
特異性	Specific for human Histone H3 mono methyl K36. Shows partial cross-reactivity with di-methyl K36 (please see Western Blot image). This antibody may not be suitable for experiments on yeast lysate. Although the antibody is specifically blocked using the immunising peptide, customer feedback indicates that it detects a band using <i>S. cerevisiae</i> K36 point mutants. We welcome further customer feedback.
アプリケーション	適用あり: WB, ChIP, ICC/IF
種交差性	交差種: Human 交差が予測される動物種: Mouse, Cow, Pig, <i>Saccharomyces cerevisiae</i> , <i>Arabidopsis thaliana</i> , <i>Drosophila melanogaster</i> , Mammals 
免疫原	Synthetic peptide. This information is proprietary to Abcam and/or its suppliers.
ポジティブ・コントロール	ICC/IF: HeLa cells
特記事項	<p>The Life Science industry has been in the grips of a reproducibility crisis for a number of years. Abcam is leading the way in addressing this with our range of recombinant monoclonal antibodies and knockout edited cell lines for gold-standard validation. Please check that this product meets your needs before purchasing.</p> <p>If you have any questions, special requirements or concerns, please send us an inquiry and/or contact our Support team ahead of purchase. Recommended alternatives for this product can be found below, along with publications, customer reviews and Q&As</p>

製品の特性

製品の状態	Liquid
保存方法	Shipped at 4°C. Store at +4°C short term (1-2 weeks). Upon delivery aliquot. Store at -20°C or -80°C. Avoid freeze / thaw cycle.
バッファー	<p>pH: 7.40</p> <p>Preservative: 0.02% Sodium azide</p> <p>Constituent: PBS</p>

Batches of this product that have a concentration < 1mg/ml may have BSA added as a stabilising agent. If you would like information about the formulation of a specific lot, please contact our scientific support team who will be happy to help.

精製度	Immunogen affinity purified
ポリ/モノ	ポリクローナル
アイソタイプ	IgG

アプリケーション

The Abpromise guarantee **Abpromise保証は、次のテスト済みアプリケーションにおけるab9048の使用に適用されます**
 アプリケーションノートには、推奨の開始希釈率がありますが、適切な希釈率につきましてはご検討ください。

アプリケーション	Abreviews	特記事項
WB	★★★★★ (4)	1/1000.
ChIP	★★★★★ (3)	Use 2 µg for 25 µg of chromatin.
ICC/IF	★★★★★ (1)	Use a concentration of 0.1 µg/ml.

ターゲット情報

機能	Core component of nucleosome. Nucleosomes wrap and compact DNA into chromatin, limiting DNA accessibility to the cellular machineries which require DNA as a template. Histones thereby play a central role in transcription regulation, DNA repair, DNA replication and chromosomal stability. DNA accessibility is regulated via a complex set of post-translational modifications of histones, also called histone code, and nucleosome remodeling.
配列類似性	Belongs to the histone H3 family.
発生段階	Expressed during S phase, then expression strongly decreases as cell division slows down during the process of differentiation.
翻訳後修飾	<p>Acetylation is generally linked to gene activation. Acetylation on Lys-10 (H3K9ac) impairs methylation at Arg-9 (H3R8me2s). Acetylation on Lys-19 (H3K18ac) and Lys-24 (H3K24ac) favors methylation at Arg-18 (H3R17me).</p> <p>Citrullination at Arg-9 (H3R8ci) and/or Arg-18 (H3R17ci) by PAD4 impairs methylation and represses transcription.</p> <p>Asymmetric dimethylation at Arg-18 (H3R17me2a) by CARM1 is linked to gene activation. Symmetric dimethylation at Arg-9 (H3R8me2s) by PRMT5 is linked to gene repression. Asymmetric dimethylation at Arg-3 (H3R2me2a) by PRMT6 is linked to gene repression and is mutually exclusive with H3 Lys-5 methylation (H3K4me2 and H3K4me3). H3R2me2a is present at the 3' of genes regardless of their transcription state and is enriched on inactive promoters, while it is absent on active promoters.</p> <p>Methylation at Lys-5 (H3K4me), Lys-37 (H3K36me) and Lys-80 (H3K79me) are linked to gene activation. Methylation at Lys-5 (H3K4me) facilitates subsequent acetylation of H3 and H4. Methylation at Lys-80 (H3K79me) is associated with DNA double-strand break (DSB) responses and is a specific target for TP53BP1. Methylation at Lys-10 (H3K9me) and Lys-28 (H3K27me) are linked to gene repression. Methylation at Lys-10 (H3K9me) is a specific target for HP1</p>

proteins (CBX1, CBX3 and CBX5) and prevents subsequent phosphorylation at Ser-11 (H3S10ph) and acetylation of H3 and H4. Methylation at Lys-5 (H3K4me) and Lys-80 (H3K79me) require preliminary monoubiquitination of H2B at 'Lys-120'. Methylation at Lys-10 (H3K9me) and Lys-28 (H3K27me) are enriched in inactive X chromosome chromatin.

Phosphorylated at Thr-4 (H3T3ph) by GSG2/haspin during prophase and dephosphorylated during anaphase. Phosphorylation at Ser-11 (H3S10ph) by AURKB is crucial for chromosome condensation and cell-cycle progression during mitosis and meiosis. In addition phosphorylation at Ser-11 (H3S10ph) by RPS6KA4 and RPS6KA5 is important during interphase because it enables the transcription of genes following external stimulation, like mitogens, stress, growth factors or UV irradiation and result in the activation of genes, such as c-fos and c-jun.

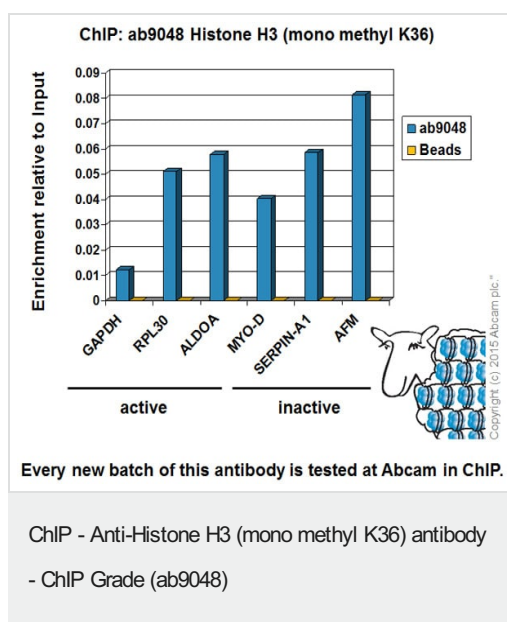
Phosphorylation at Ser-11 (H3S10ph), which is linked to gene activation, prevents methylation at Lys-10 (H3K9me) but facilitates acetylation of H3 and H4. Phosphorylation at Ser-11 (H3S10ph) by AURKB mediates the dissociation of HP1 proteins (CBX1, CBX3 and CBX5) from heterochromatin. Phosphorylation at Ser-11 (H3S10ph) is also an essential regulatory mechanism for neoplastic cell transformation. Phosphorylated at Ser-29 (H3S28ph) by MLTK isoform 1, RPS6KA5 or AURKB during mitosis or upon ultraviolet B irradiation. Phosphorylation at Thr-7 (H3T6ph) by PRKCBB is a specific tag for epigenetic transcriptional activation that prevents demethylation of Lys-5 (H3K4me) by LSD1/KDM1A. At centromeres, specifically phosphorylated at Thr-12 (H3T11ph) from prophase to early anaphase, by DAPK3 and PKN1. Phosphorylation at Thr-12 (H3T11ph) by PKN1 is a specific tag for epigenetic transcriptional activation that promotes demethylation of Lys-10 (H3K9me) by KDM4C/JMJD2C. Phosphorylation at Tyr-42 (H3Y41ph) by JAK2 promotes exclusion of CBX5 (HP1 alpha) from chromatin.

Monoubiquitinated by RAG1 in lymphoid cells, monoubiquitination is required for V(D)J recombination (By similarity). Ubiquitinated by the CUL4-DDB-RBX1 complex in response to ultraviolet irradiation. This may weaken the interaction between histones and DNA and facilitate DNA accessibility to repair proteins.

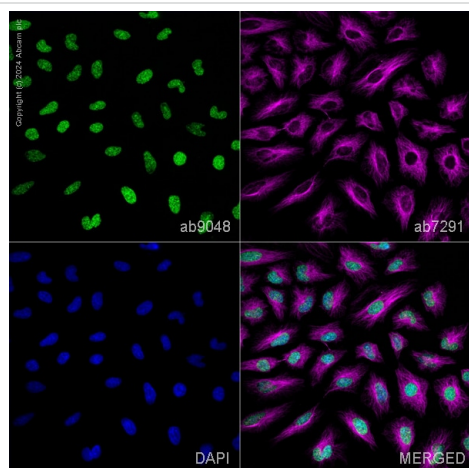
細胞内局在

Nucleus. Chromosome.

画像

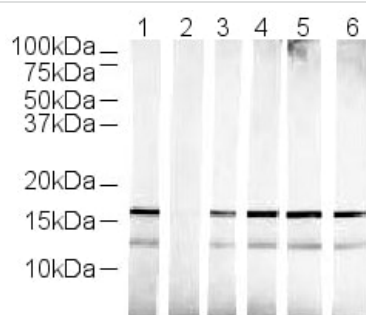


Chromatin was prepared from HeLa cells according to the Abcam X-ChIP protocol. Cells were fixed with formaldehyde for 10 minutes. The ChIP was performed with 25µg of chromatin, 2µg of ab9048 (blue), and 20µl of Protein A/G sepharose beads. No antibody was added to the beads control (yellow). The immunoprecipitated DNA was quantified by real time PCR (Taqman approach). Primers and probes are located in the first kb of the transcribed region.



Immunocytochemistry/ Immunofluorescence - Anti-Histone H3 (mono methyl K36) antibody - ChIP Grade (ab9048)

ab9048 staining Histone H3 (mono methyl K36) in HeLa cells. The cells were fixed with 100% methanol (5 min), permeabilized with 0.1% PBS-Triton X-100 for 5 minutes and then blocked with 1% BSA/10% normal goat serum/0.3M glycine in 0.1%PBS-Tween for 1h. The cells were then incubated overnight at 4°C with ab9048 at 0.1µg/ml and **ab7291**, Mouse monoclonal [DM1A] to alpha Tubulin - Loading Control. Cells were then incubated with **ab150081**, Goat polyclonal Secondary Antibody to Rabbit IgG - H&L (Alexa Fluor® 488), pre-adsorbed at 1/1000 dilution (shown in green) and **ab150120**, Goat polyclonal Secondary Antibody to Mouse IgG - H&L (Alexa Fluor® 594), pre-adsorbed at 1/1000 dilution (shown in pseudocolour magenta). Nuclear DNA was labelled with DAPI (shown in blue). Also suitable in cells fixed with 4% paraformaldehyde (10 min). Image was acquired with a high-content analyser (Operetta CLS, Perkin Elmer) and a maximum intensity projection of confocal sections is shown.



Western blot - Anti-Histone H3 (mono methyl K36) antibody - ChIP Grade (ab9048)

All lanes : Anti-Histone H3 (mono methyl K36) antibody - ChIP Grade (ab9048) at 1/500 dilution

Lane 1 : Histone prep

Lane 2 : Histone prep with Human Histone H3 (mono methyl K36) peptide (**ab1783**) at 1 µg/ml

Lane 3 : Histone prep with Human Histone H3 (di methyl K36) peptide (**ab1784**) at 1 µg/ml

Lane 4 : Histone prep with Human Histone H3 (tri methyl K36) peptide (**ab1785**) at 1 µg/ml

Lane 5 : Histone prep with Human Histone H3 (unmodified) peptide (**ab2623**) at 1 µg/ml

Lane 6 : Histone prep with Human Histone H3 (mono methyl K4) peptide (**ab1340**) at 1 µg/ml

Lysates/proteins at 0.5 µg per lane.

Secondary

All lanes : Goat Anti-Rabbit IgG H&L (HRP) (**ab6721**) at 1/5000 dilution

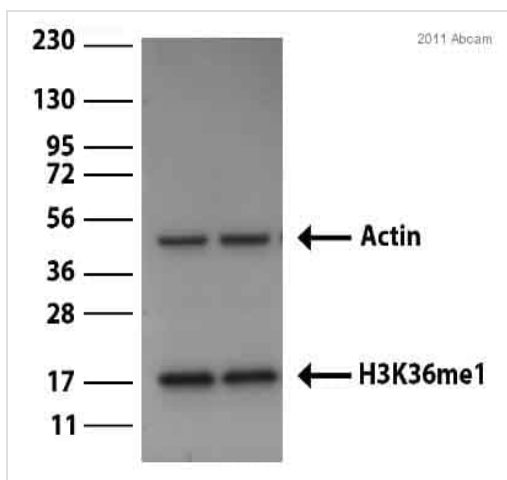
Secondary ab: Alexa Fluor 680 Goat anti-rabbit IgG

0.5µg histone prep used per lane

Primary antibody:

Lane 1: ab9048 (Histone H3 Mono Methyl K36) 1/500
 Lane 2: ab9048 (Histone H3 Mono Methyl K36) 1/500 + **ab1783**
 (ab9048) (Histone H3 Mono Methyl K36) peptide 1µg/ml
 Lane 3: ab9048 (Histone H3 Mono Methyl K36) 1/500 + **ab1794**
 (**ab9049**) (Histone H3 Di Methyl K36) peptide 1µg/ml
 Lane 4: ab9048 (Histone H3 Mono Methyl K36) 1/500 + **ab1785**
 (**ab9050**) (Histone H3 Tri Methyl K36) peptide 1µg/ml
 Lane 5: ab9048 (Histone H3 Mono Methyl K36) 1/500 + **ab2623**
 (Histone H3 (23-34) – unmodified) peptide 1µg/ml
 Lane 6: ab9048 (Histone H3 Mono Methyl K36) 1/500 + **ab1340**
 (**ab8895**) (Histone H3 Mono methyl K4) peptide 1µg/ml

ab9048 specifically recognise



Western blot - Anti-Histone H3 (mono methyl K36)
 antibody - ChIP Grade (ab9048)
 Image courtesy of an anonymous Abreview.

All lanes : Anti-Histone H3 (mono methyl K36) antibody - ChIP
 Grade (ab9048) at 1/1400 dilution

All lanes : Whole cell lysate prepared from Drosophila BG3 cells

Lysates/proteins at 500000 cells per lane.

Secondary

All lanes : HRP donkey anti-rabbit monoclonal at 1/20000 dilution

Developed using the ECL technique.

Observed band size: 17,42 kDa

Exposure time: 30 seconds

Please note: All products are "FOR RESEARCH USE ONLY. NOT FOR USE IN DIAGNOSTIC PROCEDURES"

Our Abpromise to you: Quality guaranteed and expert technical support

- Replacement or refund for products not performing as stated on the datasheet
- Valid for 12 months from date of delivery
- Response to your inquiry within 24 hours
- We provide support in Chinese, English, French, German, Japanese and Spanish
- Extensive multi-media technical resources to help you
- We investigate all quality concerns to ensure our products perform to the highest standards

If the product does not perform as described on this datasheet, we will offer a refund or replacement. For full details of the Abpromise, please visit <https://www.abcam.co.jp/abpromise> or contact our technical team.

Terms and conditions

- Guarantee only valid for products bought direct from Abcam or one of our authorized distributors