



# Anti-Histone H1.5 antibody ab24175

★☆☆☆☆ **1 Abreviews** **15 References** 画像数 1

### 製品の概要

製品名	Anti-Histone H1.5 antibody
製品の詳細	Rabbit polyclonal to Histone H1.5
由来種	Rabbit
特異性	This antibody is specific for Histone H1.5. Reacts with histone H1 acid-extracted from cell lines such as breast cancer cell line T47D. Also recognizes H1 in a nuclear extract or chromatin preparation. H1.5 is present in many human cell lines.
アプリケーション	<b>適用あり:</b> WB
種交差性	<b>交差種:</b> Human
免疫原	Synthetic peptide: AETATPAPVEKSPAKKKATKKAAGAGAAK -C , corresponding to N terminal amino acids 7-35 of Human Histone H1.5  <a href="#">Run BLAST with</a>  <a href="#">Run BLAST with</a>
特記事項	<p>The Life Science industry has been in the grips of a reproducibility crisis for a number of years. Abcam is leading the way in addressing this with our range of recombinant monoclonal antibodies and knockout edited cell lines for gold-standard validation. Please check that this product meets your needs before purchasing.</p> <p>If you have any questions, special requirements or concerns, please send us an inquiry and/or contact our Support team ahead of purchase. Recommended alternatives for this product can be found below, along with publications, customer reviews and Q&amp;As</p>

### 製品の特性

製品の状態	Liquid
保存方法	Shipped at 4°C. Store at +4°C short term (1-2 weeks). Add glycerol to a final volume of 50% for extra stability and aliquot. Store at -20°C or -80°C. Avoid freeze / thaw cycle.
バッファー	Preservative: 0.02% Sodium azide Constituent: 8% Glycerol
精製度	Protein A purified
ポリ/モノ	ポリクローナル
アイソタイプ	IgG

## アプリケーション

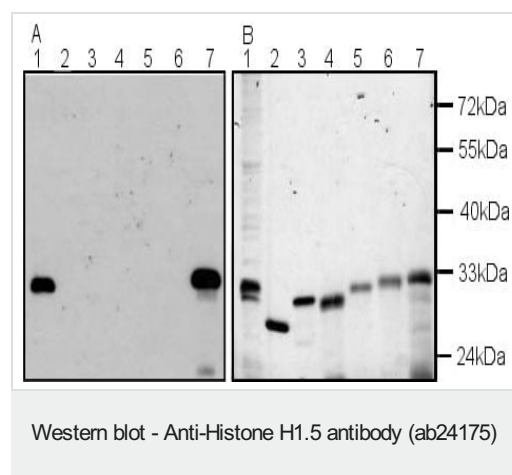
**The Abpromise guarantee**      **Abpromise保証は、** 次のテスト済みアプリケーションにおけるab24175の使用に適用されます  
アプリケーションノートには、推奨の開始希釈率がありますが、適切な希釈率につきましてはご検討ください。

アプリケーション	Abreviews	特記事項
WB		1/500 - 1/1000. Detects a band of approximately 33 kDa (predicted molecular weight: 22 kDa).

## ターゲット情報

機能	Histones H1 are necessary for the condensation of nucleosome chains into higher order structures.
配列類似性	Belongs to the histone H1/H5 family. Contains 1 H15 (linker histone H1/H5 globular) domain.
細胞内局在	Nucleus. Chromosome.

## 画像



All lanes : Histone H1.5 antibody (ab24175)

Lane 1 : Chromatin preparation from a breast cancer cell line

Lane 2 : recombinant human H1.0

Lane 3 : recombinant human H1.1

Lane 4 : recombinant human H1.2

Lane 5 : recombinant human H1.3

Lane 6 : recombinant human H1.4

Lane 7 : recombinant human H1.5

Panel B is a silver stain of the gel in panel A.

All lanes : Histone H1.5 antibody (ab24175)

Lane 1 : Chromatin preparation from a breast cancer cell line

Lane 2 : recombinant human H1.0

Lane 3 : recombinant human H1.1

Lane 4 : recombinant human H1.2

Lane 5 : recombinant human H1.3

Lane 6 : recombinant human H1.4

Lane 7 : recombinant human H1.5

Panel B is a silver stain of the gel in panel A.

**Please note:** All products are "FOR RESEARCH USE ONLY. NOT FOR USE IN DIAGNOSTIC PROCEDURES"

### **Our Abpromise to you: Quality guaranteed and expert technical support**

---

- Replacement or refund for products not performing as stated on the datasheet
- Valid for 12 months from date of delivery
- Response to your inquiry within 24 hours
  
- We provide support in Chinese, English, French, German, Japanese and Spanish
- Extensive multi-media technical resources to help you
- We investigate all quality concerns to ensure our products perform to the highest standards

If the product does not perform as described on this datasheet, we will offer a refund or replacement. For full details of the Abpromise, please visit <https://www.abcam.co.jp/abpromise> or contact our technical team.

### **Terms and conditions**

---

- Guarantee only valid for products bought direct from Abcam or one of our authorized distributors