


Anti-HIRA/HIR antibody ab20655

★★★★★ **3 Abreviews** **10 References** 画像数 1

製品の概要

製品名	Anti-HIRA/HIR antibody
製品の詳細	Rabbit polyclonal to HIRA/HIR
由来種	Rabbit
特異性	ab20655 is able to recognise a band at 115kDa corresponding to the long isoform of HIRA/HIR and a band at 89kDa, corresponding to the short isoform of HIRA/HIR in HepG2 nuclear extract.
アプリケーション	適用あり: WB
種交差性	交差種: Human 交差が予測される動物種: Mouse, Rat, Dog 
免疫原	Synthetic peptide corresponding to Human HIRA/HIR aa 1000 to the C-terminus (C terminal) conjugated to keyhole limpet haemocyanin. Database link: P54198 (Peptide available as ab22456 , ab22457)
特記事項	<p>The Life Science industry has been in the grips of a reproducibility crisis for a number of years. Abcam is leading the way in addressing this with our range of recombinant monoclonal antibodies and knockout edited cell lines for gold-standard validation. Please check that this product meets your needs before purchasing.</p> <p>If you have any questions, special requirements or concerns, please send us an inquiry and/or contact our Support team ahead of purchase. Recommended alternatives for this product can be found below, along with publications, customer reviews and Q&As</p>

製品の特性

製品の状態	Liquid
保存方法	Shipped at 4°C. Store at +4°C short term (1-2 weeks). Upon delivery aliquot. Store at -20°C or -80°C. Avoid freeze / thaw cycle.
バッファー	pH: 7.40 Preservative: 0.02% Sodium azide Constituent: PBS Batches of this product that have a concentration < 1mg/ml may have BSA added as a stabilising agent. If you would like information about the formulation of a specific lot, please contact our scientific support team who will be happy to help.

精製度	Immunogen affinity purified
ポリ/モノ	ポリクローナル
アイソタイプ	IgG

アプリケーション

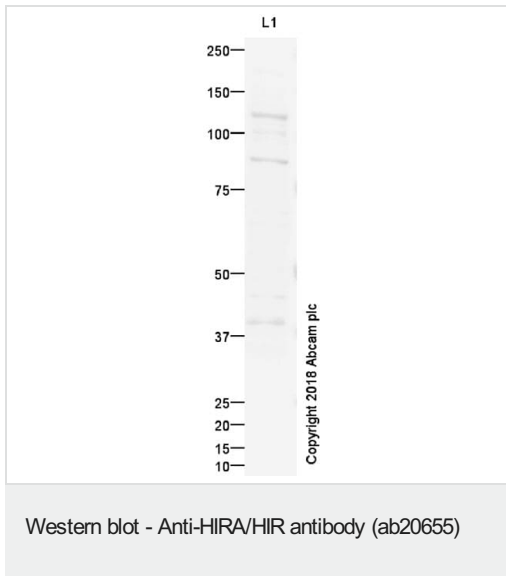
The Abpromise guarantee **Abpromise保証は、次のテスト済みアプリケーションにおけるab20655の使用に適用されます**
 アプリケーションノートには、推奨の開始希釈率がありますが、適切な希釈率につきましてはご確認ください。

アプリケーション	Abreviews	特記事項
WB	★★★★★ (2)	Use a concentration of 1 µg/ml. Detects a band of approximately 89 kDa (predicted molecular weight: 89 kDa). Detects a band of approximately 89 kDa, corresponding to the short isoform of HIRA/HIR.

ターゲット情報

機能	Cooperates with ASF1A to promote replication-independent chromatin assembly. Required for the periodic repression of histone gene transcription during the cell cycle. Required for the formation of senescence-associated heterochromatin foci (SAHF) and efficient senescence-associated cell cycle exit.
組織特異性	Expressed at high levels in kidney, pancreas and skeletal muscle and at lower levels in brain, heart, liver, lung, and placenta.
配列類似性	Belongs to the WD repeat HIR1 family. Contains 8 WD repeats.
発生段階	Expressed during embryogenesis.
翻訳後修飾	Sumoylated. Phosphorylated by CDK2/CCNA1 and CDK2/CCNE1 on Thr-555 in vitro. Also phosphorylated on Thr-555 and Ser-687 in vivo.
細胞内局在	Nucleus. Nucleus > PML body. Primarily, though not exclusively, localized to the nucleus. Localizes to PML bodies immediately prior to onset of senescence.

画像



ab20655 at 10 µg + HepG2 nuclear extract lysate at 10 µg

Secondary

IRDye 680 Conjugated Goat Anti-Rabbit IgG (H+L) at 1/10000 dilution

Developed using the ECL technique.

Performed under reducing conditions.

Predicted band size: 89 kDa

Observed band size: 115 kDa

Additional bands at: 89 kDa (possible isoform)

ab20655 is able to recognise a band at 115kDa corresponding to the long isoform of HIRA/HIR and a band at 89kDa, corresponding to the short isoform of HIRA/HIR.

Please note: All products are "FOR RESEARCH USE ONLY. NOT FOR USE IN DIAGNOSTIC PROCEDURES"

Our Abpromise to you: Quality guaranteed and expert technical support

- Replacement or refund for products not performing as stated on the datasheet
- Valid for 12 months from date of delivery
- Response to your inquiry within 24 hours
- We provide support in Chinese, English, French, German, Japanese and Spanish
- Extensive multi-media technical resources to help you
- We investigate all quality concerns to ensure our products perform to the highest standards

If the product does not perform as described on this datasheet, we will offer a refund or replacement. For full details of the Abpromise, please visit <https://www.abcam.co.jp/abpromise> or contact our technical team.

Terms and conditions

- Guarantee only valid for products bought direct from Abcam or one of our authorized distributors