


Anti-heavy chain cardiac Myosin antibody [BA-G5] ab50967

★★★★★ 12 Abreviews 83 References 画像数 2

製品の概要

製品名	Anti-heavy chain cardiac Myosin antibody [BA-G5]
製品の詳細	Mouse monoclonal [BA-G5] to heavy chain cardiac Myosin
由来種	Mouse
アプリケーション	適用あり: WB
種交差性	交差種: Mouse, Rat 交差が予測される動物種: Rabbit, Cow, Human, Pig 
免疫原	Tissue, cells or virus. This information is proprietary to Abcam and/or its suppliers.
ポジティブ・コントロール	This antibody gave a positive signal in the following Tissue Lysates: Mouse Skeletal Muscle, Rat Heart, Rat Skeletal Muscle
特記事項	<p>This antibody clone is manufactured by Abcam. If you require a custom buffer formulation or conjugation for your experiments, please contact orders@abcam.com.</p> <p>The Life Science industry has been in the grips of a reproducibility crisis for a number of years. Abcam is leading the way in addressing this with our range of recombinant monoclonal antibodies and knockout edited cell lines for gold-standard validation. Please check that this product meets your needs before purchasing.</p> <p>If you have any questions, special requirements or concerns, please send us an inquiry and/or contact our Support team ahead of purchase. Recommended alternatives for this product can be found below, along with publications, customer reviews and Q&As</p>

製品の特性

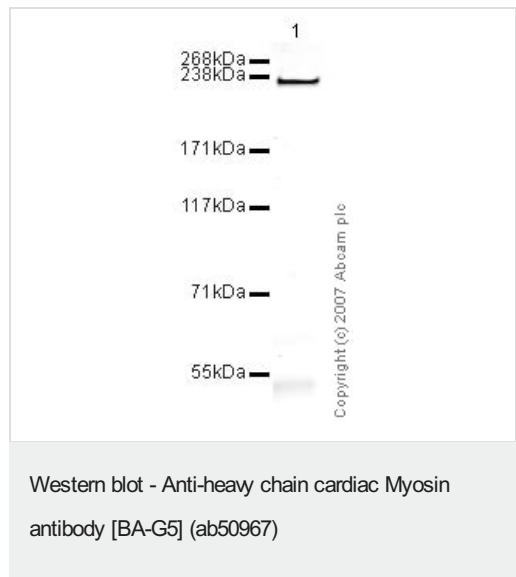
製品の状態	Liquid
保存方法	Shipped at 4°C. Upon delivery aliquot and store at -20°C or -80°C. Avoid repeated freeze / thaw cycles.
バッファー	pH: 7.40 Preservative: 0.02% Sodium azide Constituents: PBS, 6.97% L-Arginine
精製度	Protein G purified
ポリ/モノ	モノクローナル
クローン名	BA-G5

アプリケーション

The Abpromise guarantee Abpromise保証は、 次のテスト済みアプリケーションにおけるab50967の使用に適用されます
 アプリケーションノートには、推奨の開始希釈率がありますが、適切な希釈率につきましてはご確認ください。

アプリケーション	Abreviews	特記事項
WB	★★★★★ (6)	Use a concentration of 1 - 5 µg/ml. Detects a band of approximately 223 kDa (predicted molecular weight: 223 kDa).

画像

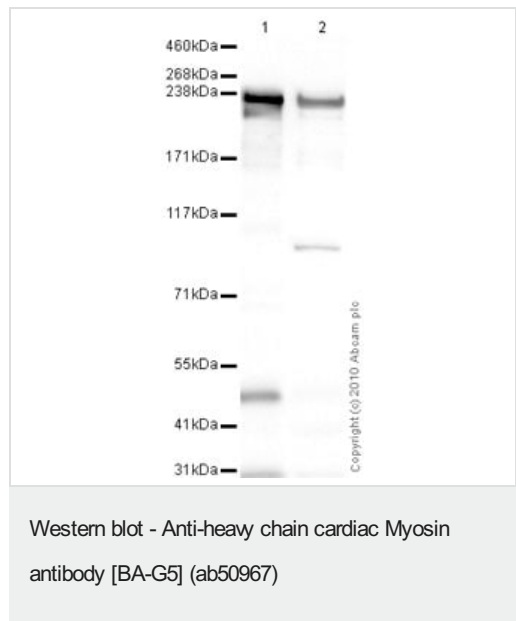


Anti-heavy chain cardiac Myosin antibody [BA-G5] (ab50967) at 5 µg/ml + Heart (Mouse) Tissue Lysate at 10 µg

Secondary
 IRDye 680 Conjugated Goat Anti-Mouse IgG (H+L) at 1/10000 dilution

Performed under reducing conditions.

Predicted band size: 223 kDa
Observed band size: 223 kDa



All lanes : Anti-heavy chain cardiac Myosin antibody [BA-G5] (ab50967) at 1 µg/ml

Lane 1 : Heart (Rat) Tissue Lysate
Lane 2 : Skeletal Muscle (Rat) Tissue Lysate

Lysates/proteins at 10 µg per lane.

Secondary
All lanes : Goat polyclonal to Mouse IgG - H&L - Pre-Adsorbed (HRP) at 1/3000 dilution

Developed using the ECL technique.

Performed under reducing conditions.

Predicted band size: 223 kDa

Observed band size: 223 kDa

Additional bands at: 48 kDa, 95 kDa. We are unsure as to the identity of these extra bands.

Exposure time: 4 minutes

Please note: All products are "FOR RESEARCH USE ONLY. NOT FOR USE IN DIAGNOSTIC PROCEDURES"

Our Abpromise to you: Quality guaranteed and expert technical support

- Replacement or refund for products not performing as stated on the datasheet
- Valid for 12 months from date of delivery
- Response to your inquiry within 24 hours
- We provide support in Chinese, English, French, German, Japanese and Spanish
- Extensive multi-media technical resources to help you
- We investigate all quality concerns to ensure our products perform to the highest standards

If the product does not perform as described on this datasheet, we will offer a refund or replacement. For full details of the Abpromise, please visit <https://www.abcam.co.jp/abpromise> or contact our technical team.

Terms and conditions

- Guarantee only valid for products bought direct from Abcam or one of our authorized distributors