


Anti-HCC1 antibody ab12326

★★★★★ [1 Abreviews](#) [画像数 1](#)

製品の概要

製品名	Anti-HCC1 antibody
製品の詳細	Rabbit polyclonal to HCC1
由来種	Rabbit
アプリケーション	適用あり: WB
種交差性	交差種: Human 交差が予測される動物種: Mouse, Rat, Rabbit, Horse, Guinea pig, Cow, Dog, Pig, Rhesus monkey, Gorilla, Orangutan 
免疫原	Synthetic peptide corresponding to Human HCC1 aa 480-530. (Peptide available as ab40426)
ポジティブ・コントロール	Nuclear extract from HeLa cells.
特記事項	<p>The Life Science industry has been in the grips of a reproducibility crisis for a number of years. Abcam is leading the way in addressing this with our range of recombinant monoclonal antibodies and knockout edited cell lines for gold-standard validation. Please check that this product meets your needs before purchasing.</p> <p>If you have any questions, special requirements or concerns, please send us an inquiry and/or contact our Support team ahead of purchase. Recommended alternatives for this product can be found below, along with publications, customer reviews and Q&As</p>

製品の特性

製品の状態	Liquid
保存方法	Shipped at 4°C. Upon delivery aliquot and store at -20°C. Avoid freeze / thaw cycles.
バッファー	pH: 7 Preservative: 0.1% Sodium azide Constituents: 0.021% PBS, 1.764% Sodium citrate, 1.815% Tris
精製度	Immunogen affinity purified
特記事項(精製)	Purified using the peptide immobilized on solid support.
ポリモノ	ポリクローナル
アイソタイプ	IgG

アプリケーション

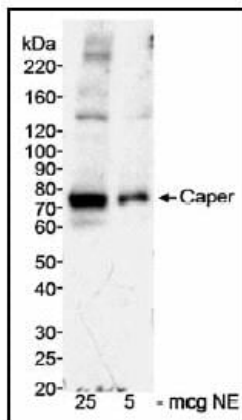
The Abpromise guarantee **Abpromise保証は、次のテスト済みアプリケーションにおけるab12326の使用に適用されます**
アプリケーションノートには、推奨の開始希釈率がありますが、適切な希釈率につきましてはご検討ください。

アプリケーション	Abreviews	特記事項
WB	★★★★☆ (1)	1/1000 - 1/10000. Predicted molecular weight: 59 kDa.

ターゲット情報

機能	Transcriptional coactivator for steroid nuclear receptors ESR1/ER-alpha and ESR2/ER-beta, and JUN/AP-1 (By similarity). May be involved in pre-mRNA splicing process.
組織特異性	Widely expressed. Highly expressed in pancreas, skeletal muscle, lung and brain. Expressed at intermediate level in kidney, liver and heart.
配列類似性	Belongs to the splicing factor SR family. Contains 3 RRM (RNA recognition motif) domains.
細胞内局在	Nucleus speckle. Concentrated in nuclear speckles. Colocalizes with the core spliceosomal snRNP proteins.

画像



Western blot - Anti-HCC1 antibody (ab12326)

Detection of Human Caper by Western Blot. Samples: Nuclear extract (NE) from HeLa cells. Antibody: ab12326 used at 0.3 mcg/ml. Detection: Chemiluminescence with an exposure time of 5 minutes.

Detection of Human Caper by Western Blot. Samples: Nuclear extract (NE) from HeLa cells. Antibody: ab12326 used at 0.3 mcg/ml. Detection: Chemiluminescence with an exposure time of 5 minutes.

Please note: All products are "FOR RESEARCH USE ONLY. NOT FOR USE IN DIAGNOSTIC PROCEDURES"

Our Abpromise to you: Quality guaranteed and expert technical support

- Replacement or refund for products not performing as stated on the datasheet
- Valid for 12 months from date of delivery
- Response to your inquiry within 24 hours
- We provide support in Chinese, English, French, German, Japanese and Spanish

- Extensive multi-media technical resources to help you
- We investigate all quality concerns to ensure our products perform to the highest standards

If the product does not perform as described on this datasheet, we will offer a refund or replacement. For full details of the Abpromise, please visit <https://www.abcam.co.jp/abpromise> or contact our technical team.

Terms and conditions

- Guarantee only valid for products bought direct from Abcam or one of our authorized distributors