

# Anti-GWL antibody ab86387

**8 References**   [画像数 3](#)

### 製品の概要

製品名	Anti-GWL antibody
製品の詳細	Rabbit polyclonal to GWL
由来種	Rabbit
アプリケーション	<b>適用あり:</b> WB, IP, IHC-P
種交差性	<b>交差種:</b> Human
免疫原	Synthetic peptide corresponding to Human GWL aa 550-600. Database link: <a href="#">NP_116233.2</a>
ポジティブ・コントロール	Hela and 293T whole cell lysates
特記事項	<p>The Life Science industry has been in the grips of a reproducibility crisis for a number of years. Abcam is leading the way in addressing this with our range of recombinant monoclonal antibodies and knockout edited cell lines for gold-standard validation. Please check that this product meets your needs before purchasing.</p> <p>If you have any questions, special requirements or concerns, please send us an inquiry and/or contact our Support team ahead of purchase. Recommended alternatives for this product can be found below, along with publications, customer reviews and Q&amp;As</p>

### 製品の特性

製品の状態	Liquid
保存方法	Shipped at 4°C. Upon delivery aliquot and store at -20°C. Avoid freeze / thaw cycles.
バッファー	pH: 7 Preservative: 0.09% Sodium azide Constituent: Tris citrate/phosphate
精製度	Immunogen affinity purified
ポリ/モノ	ポリクローナル
アイソタイプ	IgG

### アプリケーション

The Abpromise guarantee

**Abpromise保証は、** 次のテスト済みアプリケーションにおけるab86387の使用に適用されます

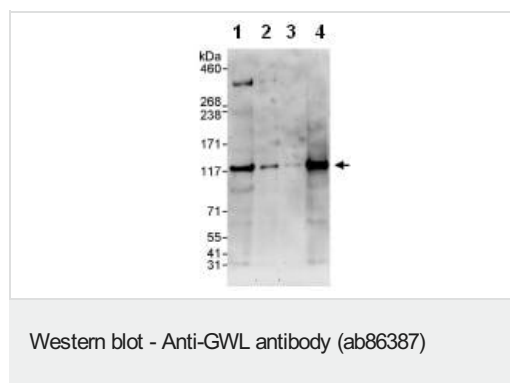
アプリケーションノートには、推奨の開始希釈率がありますが、適切な希釈率につきましてはご確認ください。

アプリケーション	Abreviews	特記事項
WB		1/2000 - 1/10000. Predicted molecular weight: 97 kDa.
IP		Use at 2-5 µg/mg of lysate.
IHC-P		1/500 - 1/2000. Perform heat mediated antigen retrieval with citrate buffer pH 6 before commencing with IHC staining protocol.

## ターゲット情報

機能	Serine/threonine kinase that plays a key role in M phase by acting as a regulator of mitosis entry and maintenance. Acts by promoting the inactivation of protein phosphatase 2A (PP2A) during M phase: does not directly inhibit PP2A but acts by mediating phosphorylation and subsequent activation of ARPP19 and ENSA at 'Ser-62' and 'Ser-67', respectively. ARPP19 and ENSA are phosphatase inhibitors that specifically inhibit the PPP2R2D (PR55-delta) subunit of PP2A. Inactivation of PP2A during M phase is essential to keep cyclin-B1-CDK1 activity high. Following DNA damage, it is also involved in checkpoint recovery by being inhibited. Phosphorylates histone protein in vitro; however such activity is unsure in vivo. May be involved in megakaryocyte differentiation.
関連疾患	Defects in MASTL are the cause of thrombocytopenia type 2 (THC2) [MIM:188000]. Thrombocytopenia is defined by a decrease in the number of platelets in circulating blood, resulting in the potential for increased bleeding and decreased ability for clotting.
配列類似性	Belongs to the protein kinase superfamily. AGC Ser/Thr protein kinase family. Contains 1 AGC-kinase C-terminal domain. Contains 1 protein kinase domain.
翻訳後修飾	Phosphorylation at Thr-741 by CDK1 during M phase activates its kinase activity (By similarity). Maximum phosphorylation occurs in prometaphase.
細胞内局在	Cytoplasm > cytoskeleton > centrosome. Nucleus. Cleavage furrow. During interphase is mainly nuclear, upon nuclear envelope breakdown localizes at the cytoplasm and during mitosis at the centrosomes. Upon mitotic exit moves to the cleavage furrow.

## 画像



**All lanes** : Anti-GWL antibody (ab86387) at 0.1 µg/ml

**Lane 1** : HeLa whole cell lysate at 50 µg

**Lane 2** : HeLa whole cell lysate at 15 µg

**Lane 3** : HeLa whole cell lysate at 5 µg

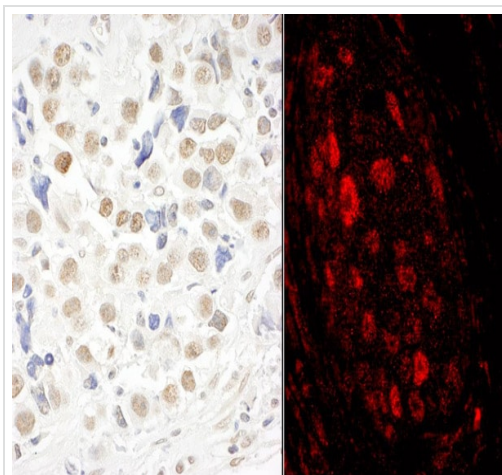
**Lane 4** : 293T whole cell lysate at 50 µg

Developed using the ECL technique.

**Predicted band size:** 97 kDa

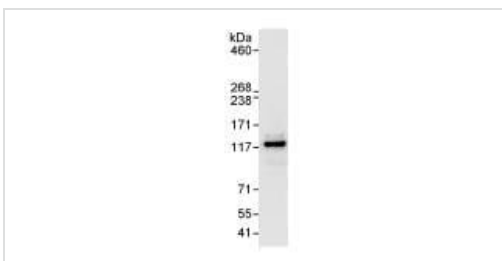
**Observed band size:** 118 kDa

**Exposure time:** 3 minutes



Immunohistochemistry (Formalin/PFA-fixed paraffin-embedded sections) - Anti-GWL antibody (ab86387)

Immunohistochemistry (Formalin/PFA-fixed paraffin-embedded sections) analysis of human testicular seminoma (left) and lung carcinoma (right) tissues labelling GWL with ab86387 at 1/1000 (1µg/ml) and 1/500 (2µg/ml). Detection: DAB and a DyLight® 594-conjugated goat anti-rabbit IgG (H+L) (1/100).



Immunoprecipitation - Anti-GWL antibody (ab86387)

Detection of GWL by Western blot of Immunoprecipitate. ab86387, at 1 µg/ml, staining GWL in HeLa whole cell lysate immunoprecipitated using ab86387 at 3 µg/mg lysate (1 mg/IP; 20% of IP loaded/lane). Detection: Chemiluminescence with an exposure time of 10 seconds.

**Please note:** All products are "FOR RESEARCH USE ONLY. NOT FOR USE IN DIAGNOSTIC PROCEDURES"

### Our Abpromise to you: Quality guaranteed and expert technical support

- Replacement or refund for products not performing as stated on the datasheet
- Valid for 12 months from date of delivery
- Response to your inquiry within 24 hours
- We provide support in Chinese, English, French, German, Japanese and Spanish
- Extensive multi-media technical resources to help you
- We investigate all quality concerns to ensure our products perform to the highest standards

If the product does not perform as described on this datasheet, we will offer a refund or replacement. For full details of the Abpromise, please visit <https://www.abcam.co.jp/abpromise> or contact our technical team.

## **Terms and conditions**

---

- Guarantee only valid for products bought direct from Abcam or one of our authorized distributors