

# Anti-GSK3 beta (phospho S9) antibody ab131097

**74 References**   **画像数 5**

### 製品の概要

製品名	Anti-GSK3 beta (phospho S9) antibody
製品の詳細	Rabbit polyclonal to GSK3 beta (phospho S9)
由来種	Rabbit
アプリケーション	<b>適用あり:</b> WB, IHC-P, ICC/IF
種交差性	<b>交差種:</b> Human
免疫原	Synthetic peptide. This information is proprietary to Abcam and/or its suppliers.
ポジティブ・コントロール	293 cell extract treated with serum; HeLa cells; Human breast carcinoma and lung carcinoma tissues.
特記事項	<p>The Life Science industry has been in the grips of a reproducibility crisis for a number of years. Abcam is leading the way in addressing this with our range of recombinant monoclonal antibodies and knockout edited cell lines for gold-standard validation. Please check that this product meets your needs before purchasing.</p> <p>If you have any questions, special requirements or concerns, please send us an inquiry and/or contact our Support team ahead of purchase. Recommended alternatives for this product can be found below, along with publications, customer reviews and Q&amp;As</p>

### 製品の特性

製品の状態	Liquid
保存方法	Shipped at 4°C. Store at -20°C. Stable for 12 months at -20°C.
バッファー	<p>pH: 7.40</p> <p>Preservative: 0.02% Sodium azide</p> <p>Constituents: 49% PBS, 50% Glycerol, 0.88% Sodium chloride</p> <p>PBS is without Mg<sup>2+</sup> and Ca<sup>2+</sup></p>
精製度	Immunogen affinity purified
特記事項(精製)	ab131097 was purified by affinity chromatography using epitope specific phosphopeptide. Non phospho specific antibodies were removed by chromatography using non phosphopeptide.
ポリ/モノ	ポリクローナル
アイソタイプ	IgG

## アプリケーション

### The Abpromise guarantee

**Abpromise保証は、次のテスト済みアプリケーションにおけるab131097の使用に適用されます**

アプリケーションノートには、推奨の開始希釈率がありますが、適切な希釈率につきましてはご確認ください。

アプリケーション	Abreviews	特記事項
WB		1/500 - 1/1000. Predicted molecular weight: 46 kDa.
IHC-P		1/50 - 1/100.
ICC/IF		1/100 - 1/200.

## ターゲット情報

### 機能

Participates in the Wnt signaling pathway. Implicated in the hormonal control of several regulatory proteins including glycogen synthase, MYB and the transcription factor JUN. Phosphorylates JUN at sites proximal to its DNA-binding domain, thereby reducing its affinity for DNA. Phosphorylates MUC1 in breast cancer cells, and decreases the interaction of MUC1 with CTNNB1/beta-catenin. Phosphorylates CTNNB1/beta-catenin. Phosphorylates SNAI1. Plays an important role in ERBB2-dependent stabilization of microtubules at the cell cortex. Prevents the phosphorylation of APC and CLASP2, allowing its association with the cell membrane. In turn, membrane-bound APC allows the localization of MACF1 to the cell membrane, which is required for microtubule capture and stabilization. Phosphorylates MACF1 and this phosphorylation inhibits the binding of MACF1 to microtubules which is critical for its role in bulge stem cell migration and skin wound repair.

### 組織特異性

Expressed in testis, thymus, prostate and ovary and weakly expressed in lung, brain and kidney.

### 配列類似性

Belongs to the protein kinase superfamily. CMGC Ser/Thr protein kinase family. GSK-3 subfamily. Contains 1 protein kinase domain.

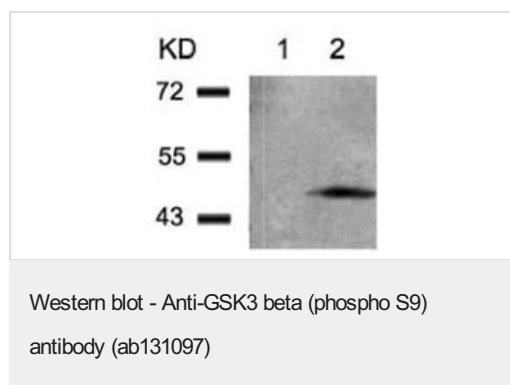
### 翻訳後修飾

Phosphorylated by AKT1 and ILK1. Activated by phosphorylation at Tyr-216.

### 細胞内局在

Cytoplasm. Nucleus. Cell membrane. The phosphorylated form shows localization to cytoplasm and cell membrane. The MEMO1-RHOA-DIAPH1 signaling pathway controls localization of the phosphorylated form to the cell membrane.

## 画像

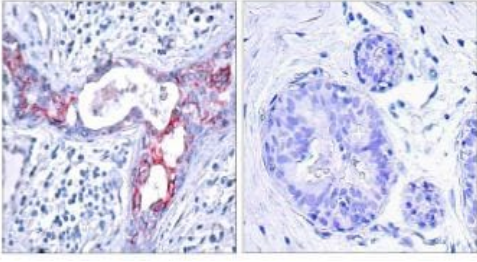


**All lanes :** Anti-GSK3 beta (phospho S9) antibody (ab131097) at 1/500 dilution

**Lane 1 :** 293 cell extract, untreated

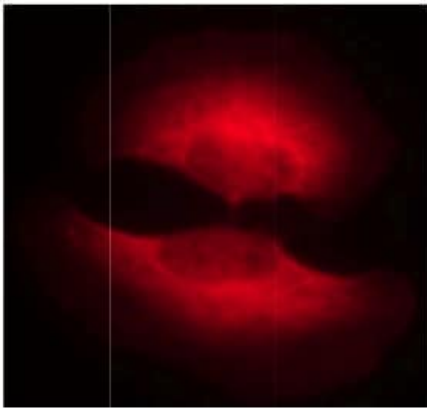
**Lane 2 :** 293 cell extract treated with serum

**Predicted band size:** 46 kDa



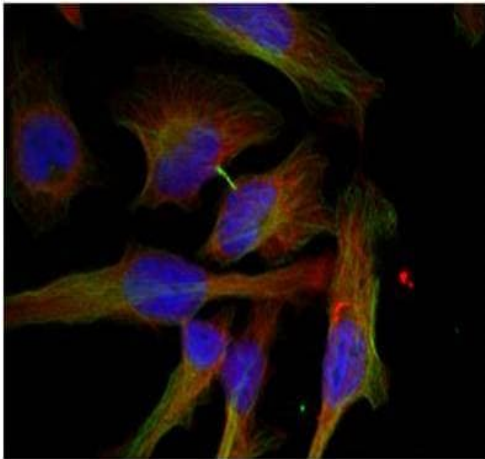
Immunohistochemistry (Formalin/PFA-fixed paraffin-embedded sections) - Anti-GSK3 beta (phospho S9) antibody (ab131097)

Immunohistochemical staining of GSK3 beta (phospho S9) in paraffin embedded Human breast carcinoma tissue, using ab131097 at a 1/50 dilution.



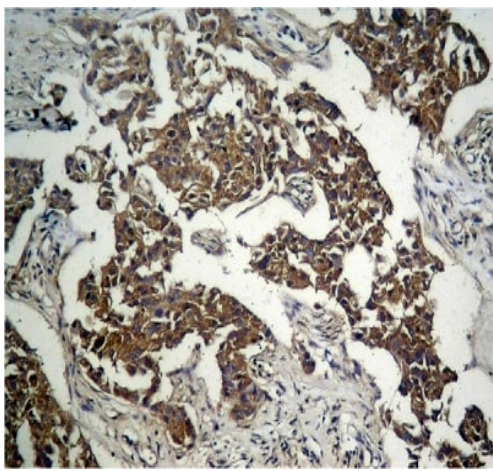
Immunocytochemistry/ Immunofluorescence - Anti-GSK3 beta (phospho S9) antibody (ab131097)

Immunofluorescence analysis of methanol fixed HeLa cells staining GSK3 beta (phospho S9) with ab131097 at a dilution of 1/100.



Immunocytochemistry/ Immunofluorescence - Anti-GSK3 beta (phospho S9) antibody (ab131097)

Methanol-fixed HeLa (human epithelial cell line from cervix adenocarcinoma) cells stained for GSK3 beta (phospho S9) (red) using ab131097 at 1/100 dilution in ICC/IF.



Immunohistochemistry (Formalin/PFA-fixed paraffin-embedded sections) - Anti-GSK3 beta (phospho S9) antibody (ab131097)

Paraffin-embedded human lung carcinoma tissue stained for GSK3 beta (phospho S9) using ab131097 at 1/50 dilution in immunohistochemical analysis.

**Please note:** All products are "FOR RESEARCH USE ONLY. NOT FOR USE IN DIAGNOSTIC PROCEDURES"

#### Our Abpromise to you: Quality guaranteed and expert technical support

---

- Replacement or refund for products not performing as stated on the datasheet
- Valid for 12 months from date of delivery
- Response to your inquiry within 24 hours
- We provide support in Chinese, English, French, German, Japanese and Spanish
- Extensive multi-media technical resources to help you
- We investigate all quality concerns to ensure our products perform to the highest standards

If the product does not perform as described on this datasheet, we will offer a refund or replacement. For full details of the Abpromise, please visit <https://www.abcam.co.jp/abpromise> or contact our technical team.

#### Terms and conditions

---

- Guarantee only valid for products bought direct from Abcam or one of our authorized distributors