

Anti-GSDMD antibody - C-terminal ab228824

[1 References](#) [画像数 2](#)

製品の概要

製品名	Anti-GSDMD antibody - C-terminal
製品の詳細	Rabbit polyclonal to GSDMD - C-terminal
由来種	Rabbit
アプリケーション	適用あり: WB, IP
種交差性	交差種: Human
免疫原	Synthetic peptide within Human GSDMD aa 434-484 (C terminal). The exact sequence is proprietary. Database link: P57764

ポジティブ・コントロール WB: Jurkat whole cell lysate ([ab7899](#)). IP: Jurkat whole cell lysate ([ab7899](#)).

特記事項 The Life Science industry has been in the grips of a reproducibility crisis for a number of years. Abcam is leading the way in addressing this with our range of recombinant monoclonal antibodies and knockout edited cell lines for gold-standard validation. Please check that this product meets your needs before purchasing.

If you have any questions, special requirements or concerns, please send us an inquiry and/or contact our Support team ahead of purchase. Recommended alternatives for this product can be found below, along with publications, customer reviews and Q&As

製品の特性

製品の状態	Liquid
保存方法	Shipped at 4°C. Store at +4°C short term (1-2 weeks). Upon delivery aliquot. Store at -20°C. Avoid freeze / thaw cycle.
バッファー	pH: 6.8 Preservative: 0.09% Sodium azide Constituents: Tris buffered saline, 0.1% BSA
精製度	Immunogen affinity purified
特記事項 (精製)	ab228824 was affinity purified using an epitope specific to GSDMD immobilized on solid support.
ポリ/モノ	ポリクローナル
アイソタイプ	IgG

アプリケーション

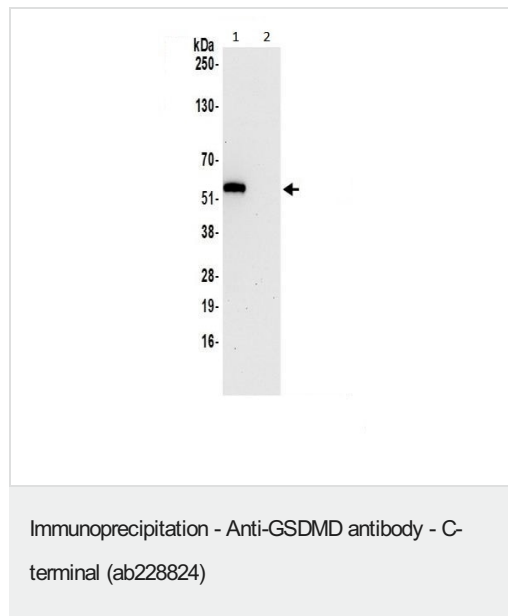
The Abpromise guarantee Abpromise保証は、次のテスト済みアプリケーションにおけるab228824の使用に適用されます
アプリケーションノートには、推奨の開始希釈率がありますが、適切な希釈率につきましてはご検討ください。

アプリケーション	Abreviews	特記事項
WB		1/1000. Predicted molecular weight: 52 kDa.
IP		Use at an assay dependent concentration. Use at 20 µl/mg lysate.

ターゲット情報

配列類似性 Belongs to the gasdermin family.

画像

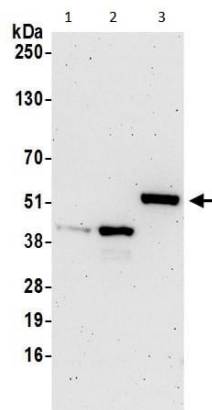


GSDMD was immunoprecipitated from Jurkat (Human T cell leukemia cell line from peripheral blood) whole cell lysate (1 mg for IP, 20% of IP loaded) with ab228824 at 20 µl per reaction. Western blot was performed from the immunoprecipitate using ab228824 at 1/100 dilution.

Lane 1: ab228824 IP in Jurkat whole cell lysate.

Lane 2: Control IgG IP in Jurkat whole cell lysate.

Detection: Chemiluminescence with exposure time of 30 seconds.



Western blot - Anti-GSDMD antibody - C-terminal (ab228824)

All lanes : Anti-GSDMD antibody - C-terminal (ab228824) at 1/1000 dilution

Lane 1 : HeLa (human epithelial cell line from cervix adenocarcinoma) whole cell lysate

Lane 2 : HEK-293T (human epithelial cell line from embryonic kidney transformed with large T antigen) whole cell lysate

Lane 3 : Jurkat (human T cell leukemia cell line from peripheral blood) whole cell lysate

Lysates/proteins at 50 µg per lane.

Developed using the ECL technique.

Predicted band size: 52 kDa

Exposure time: 3 minutes

Lysates were prepared using NETN lysis buffer.

Please note: All products are "FOR RESEARCH USE ONLY. NOT FOR USE IN DIAGNOSTIC PROCEDURES"

Our Abpromise to you: Quality guaranteed and expert technical support

- Replacement or refund for products not performing as stated on the datasheet
- Valid for 12 months from date of delivery
- Response to your inquiry within 24 hours
- We provide support in Chinese, English, French, German, Japanese and Spanish
- Extensive multi-media technical resources to help you
- We investigate all quality concerns to ensure our products perform to the highest standards

If the product does not perform as described on this datasheet, we will offer a refund or replacement. For full details of the Abpromise, please visit <https://www.abcam.co.jp/abpromise> or contact our technical team.

Terms and conditions

- Guarantee only valid for products bought direct from Abcam or one of our authorized distributors